



Join an experienced volunteer for a Guided Nature Walk

Guided Walk Schedule

Jan-Mar: Twice Daily at 9:30 a.m. & 1:30 p.m.

Apr: Daily at 9:30 a.m.

May-Oct: Every Wed. & 4th Sat. at 9:30 a.m.

Nov & Dec: Daily at 9:30 a.m.

Parking Fee: \$1 per hour; \$5 max

***Check-in begins 30 min. prior to walk at boardwalk entrance. Walks fill at 20 people (first-come, first-served).**



Volunteers around the trail answer questions and share wildlife sightings.

General Information:

Trail Hours: Dawn - Dusk

Interpretive Center Hours:

Tuesdays - Sundays

10 a.m. - 4 p.m.

Closed Mondays

Message Line: 239-533-7550

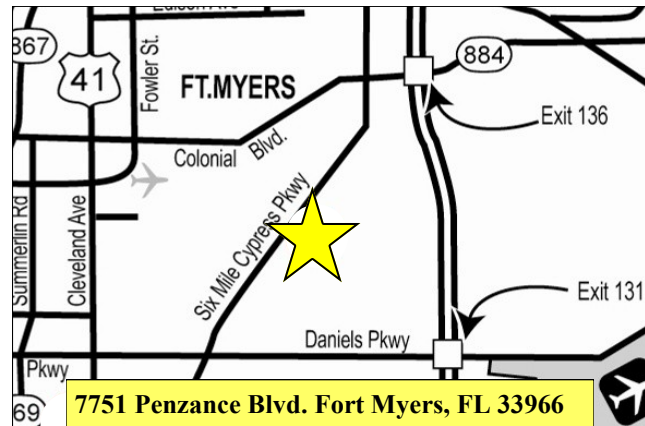
www.LeeParks.org

Program Information:

239-533-7555

e-mail: ANaccarato@LeeGov.com

To register for a program call 239-533-7275 or www.LeeParks.org



Join us! The Friends of Six Mile Cypress Slough Preserve is a not-for-profit advocacy and support organization dedicated to preserving, protecting and promoting the Preserve for future generations through education and community partnerships. For information please call 239-533-7557 or visit www.SloughPreserve.org.



Six Mile Cypress Slough Preserve



Photo by Geoff Coe

Lee County Parks & Recreation...The Natural Place To Play™
WWW.LEEPARKS.ORG



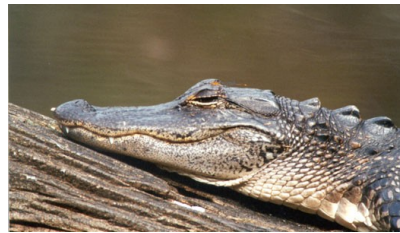
Bob Repenning

What is the Slough?

The Slough (pronounced "slew") is over 3,500 acres of wetland preserve. It is home to a variety of protected plants and animals, such as giant airplants and wood storks.

This is the perfect location for people interested in educational programs and recreational activities that create minimal disturbance to wildlife.

Guided walks expose the visitors to the hidden beauties of this unique ecosystem.



American Alligator

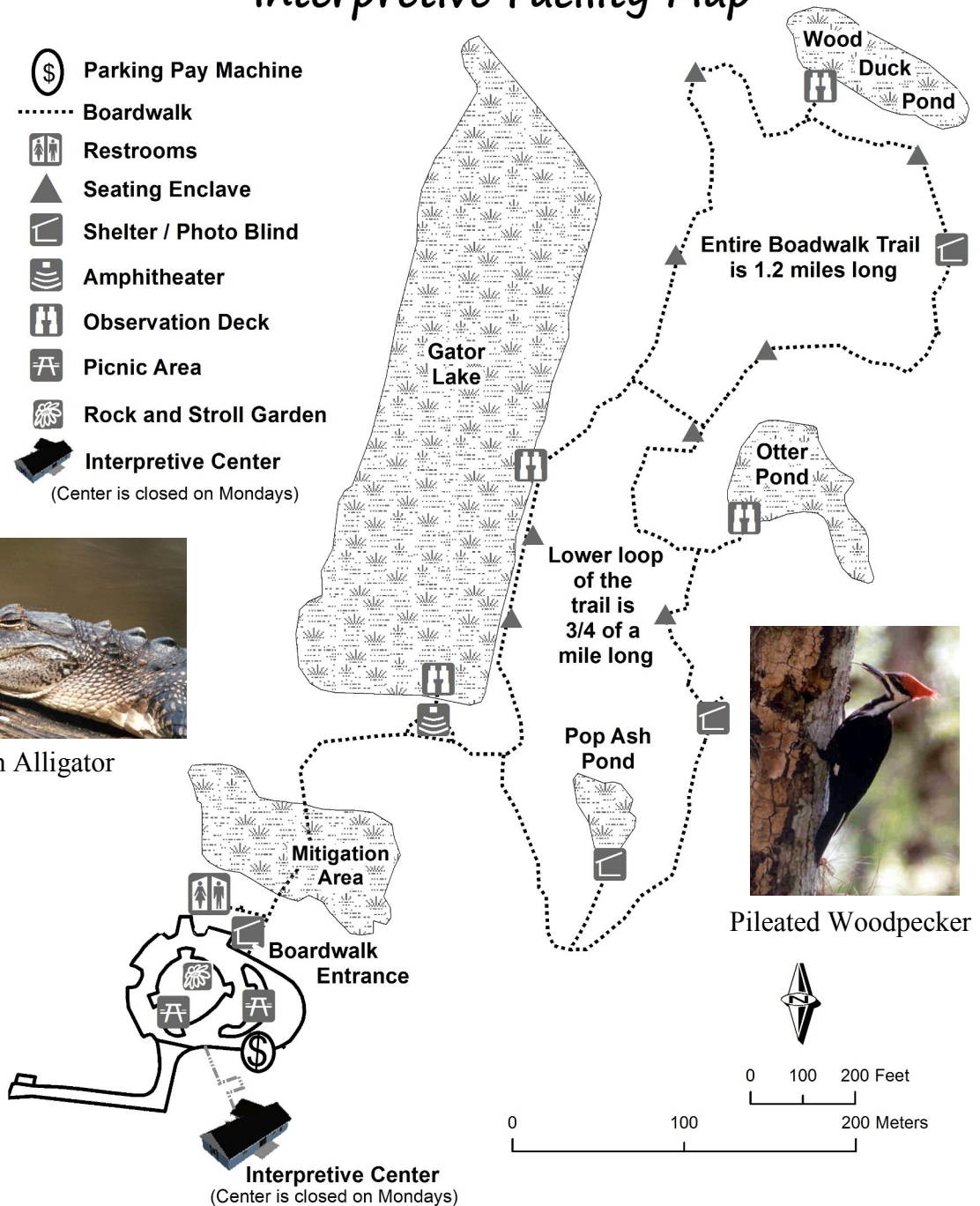
Opportunities at the Slough

- Guided Walks
- Wildlife Viewing
- Photography
- Journaling
- Full Moon Walks (Nov-Apr)
- Nature Programs
- Wet Walks (Aug-Oct)
- Summer Camp

www.LeeParks.org

All plant and animal photos were taken by **Wilma Keidel**, a volunteer naturalist for the Preserve.

Six Mile Cypress Slough Preserve Interpretive Facility Map



Pileated Woodpecker