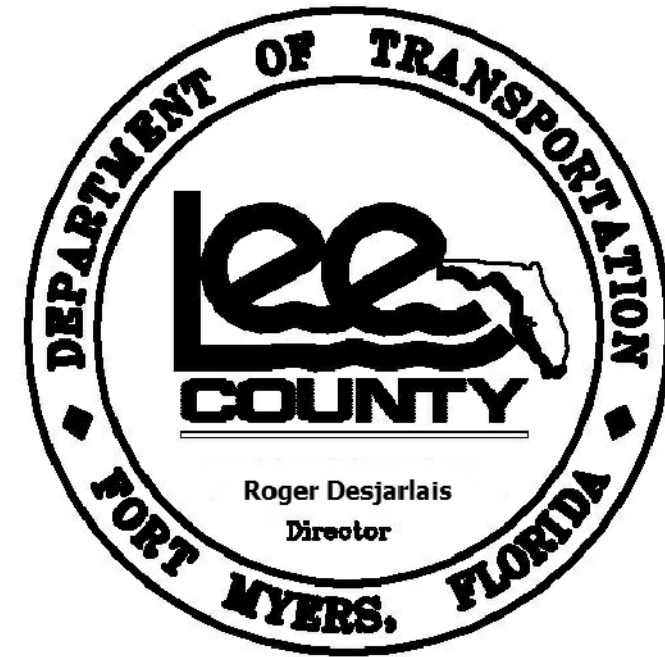


RIGHT-OF-WAY MAPS

THREE OAKS PARKWAY EXTENSION, PHASE 1

AIRPORT CANAL TO THE NORTH LINE OF SECTION 27

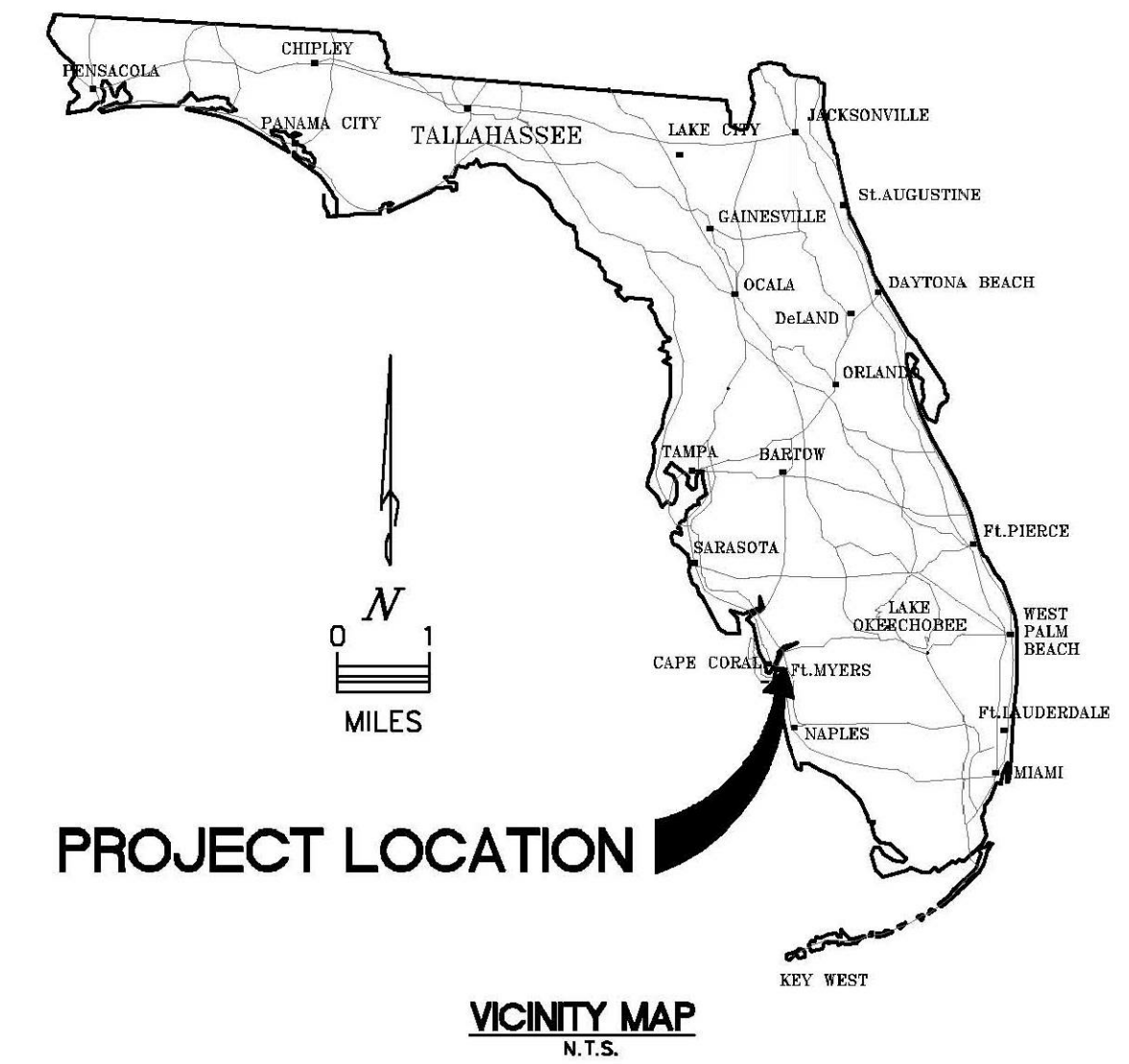
LEE COUNTY PROJECT NO. 4053



BOARD OF LEE COUNTY COMMISSIONERS
 District ONE District TWO District THREE District FOUR District FIVE
John Manning Cecil Pendergrass Larry Kiker Brian Hamman Frank Mann

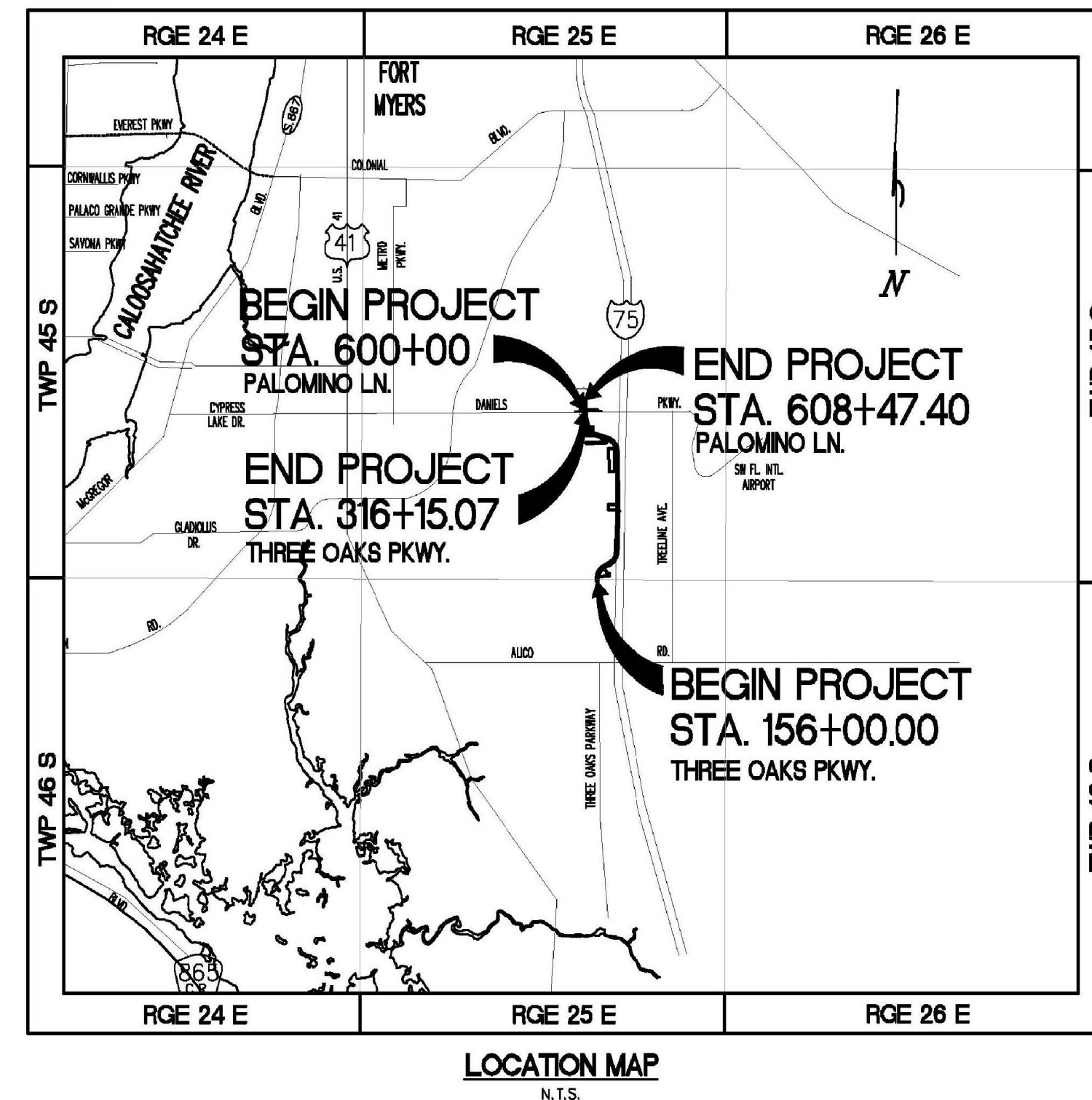
LEE COUNTY MANAGER
Roger Desjarlais

LEE COUNTY DEPARTMENT OF TRANSPORTATION
Randy Cerchie, Director
Vincent Miller, Project Manager



INDEX OF RIGHT-OF-WAY MAPS

1. COVER SHEET
2. STA. 157+87.15 TO STA. 168+67.74
3. STA. 168+67.74 TO STA. 192+00.00
4. STA. 192+00.00 TO STA. 211+00.00
5. STA. 211+00.00 TO STA. 230+00.00
6. STA. 230+00.00 TO STA. 249+00.00
7. STA. 249+00.00 TO STA. 268+00.00
8. STA. 268+00.00 TO STA. 274+31.31



LENGTH OF PROJECT		
	FEET	MILES
ROADWAY	11,644.16	2.21
BRIDGES	0	0
NET LENGTH OF PROJECT	11,644.16	2.21
EXCEPTIONS	0	0
GROSS LENGTH OF PROJECT	11,644.16	2.21

ATTENTION IS DIRECTED TO THE FACT THAT THESE PLANS MAY HAVE BEEN REDUCED IN SIZE BY REPRODUCTION. THIS MUST BE CONSIDERED WHEN OBTAINING SCALED DATA.

EXCEPT WHERE OTHERWISE INDICATED BY SPECIAL PROVISION. THE GOVERNING SPECIFICATIONS SHALL BE: STATE OF FLORIDA, DEPARTMENT OF TRANSPORTATION, STANDARD SPECIFICATIONS DATE 2007, DESIGN STANDARDS DATED 2008, AND SUPPLEMENTS THERETO IF NOTED IN THE SPECIAL PROVISIONS FOR THIS PROJECT.

NOTES:

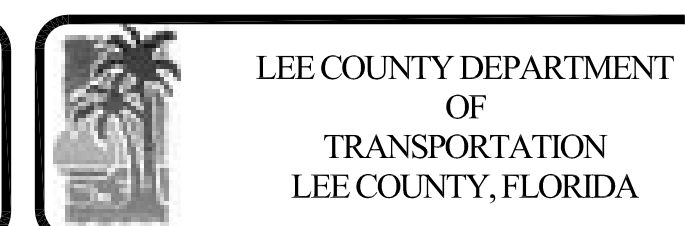
1. BEARINGS BASED ON STATE PLANE COORDINATE SYSTEM, FLORIDA WEST ZONE.
2. OWNERSHIP AND STRAP NUMBER INFORMATION OBTAINED FROM LEE COUNTY PROPERTY APPRAISERS RECORDS, JANUARY 2019.
3. RIGHT-OF-WAY IS BASED ON AVALON ENGINEERING CONSTRUCTION PLANS DATED JULY 2011.

DATE	BY	REVISION DESCRIPTION

PRELIMINARY RIGHT-OF-WAY MAPS
 (MAY 2020)

DONALD D. STOUTEN, P.S.M.
 CERTIFICATE # 3839

JOB #	DATE:
PROJ. MGR.	DON STOUTEN, PSM
PROJ. DIR.	
APPROVED:	



THREE OAKS PARKWAY EXTENSION
 AIRPORT CANAL TO THE NORTH LINE OF SECTION 27
 LEE COUNTY, FLORIDA

COVER SHEET
 THREE OAKS PKWY EXT., PHASE I

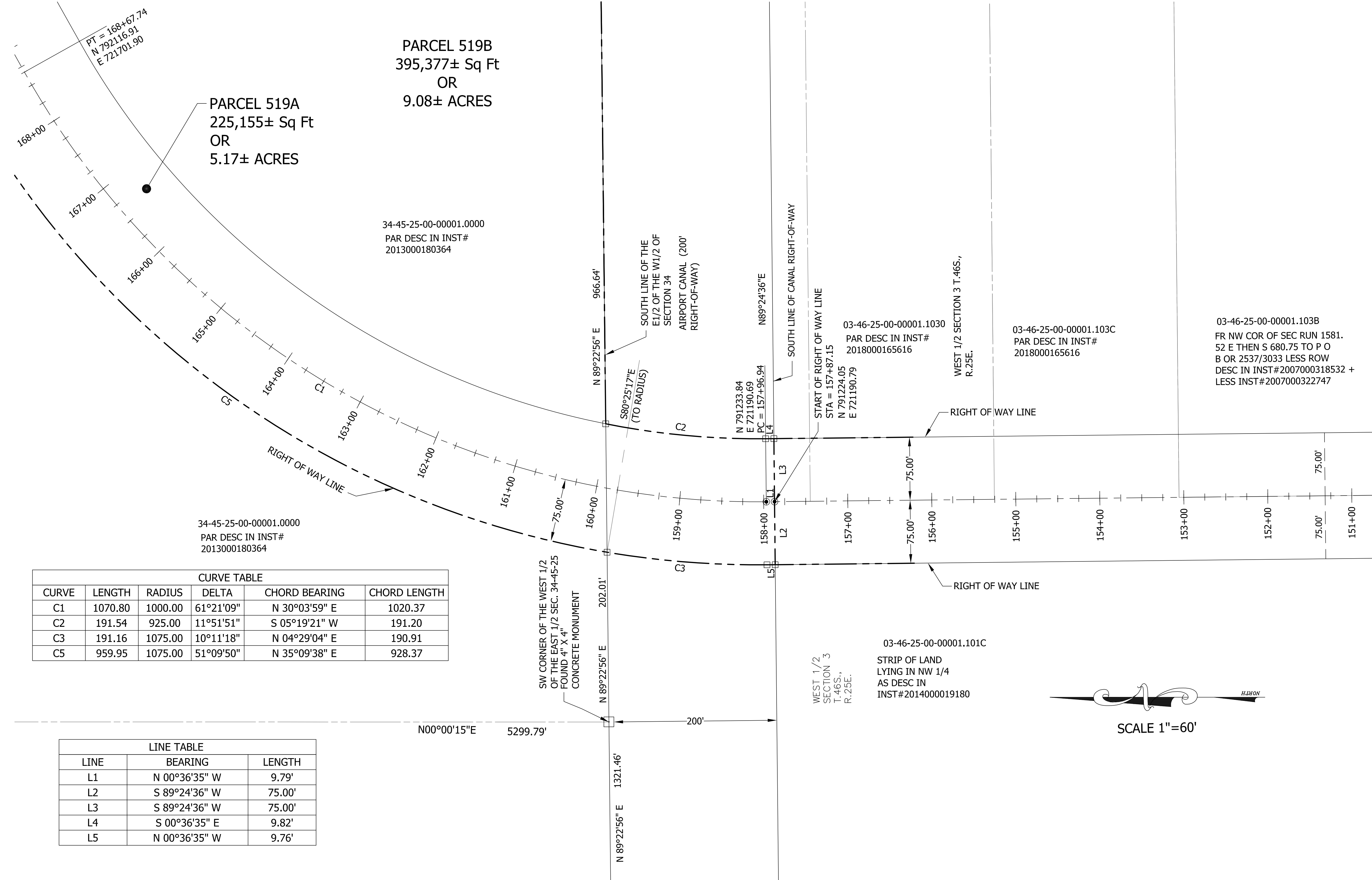
SHEET
 1 OF 8

RIGHT-OF-WAY MAPS

THREE OAKS PARKWAY EXTENSION, PHASE 1

AIRPORT CANAL TO THE NORTH LINE OF SECTION 27

SEE SHEET 3 OF 8



PARCEL 519B
395,377± Sq Ft
OR
9.08± ACRES

PARCEL 519A
225,155± Sq Ft
OR
5.17± ACRES

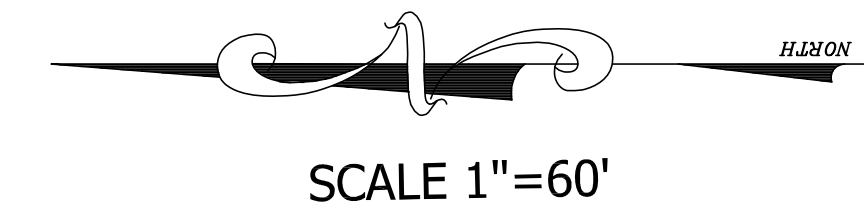
34-45-25-00-00001.0000
PAR DESC IN INST#
2013000180364

34-45-25-00-00001.0000
PAR DESC IN INST#
2013000180364

CURVE TABLE					
CURVE	LENGTH	RADIUS	DELTA	CHORD BEARING	CHORD LENGTH
C1	1070.80	1000.00	61°21'09"	N 30°03'59" E	1020.37
C2	191.54	925.00	11°51'51"	S 05°19'21" W	191.20
C3	191.16	1075.00	10°11'18"	N 04°29'04" E	190.91
C5	959.95	1075.00	51°09'50"	N 35°09'38" E	928.37

LINE TABLE		
LINE	BEARING	LENGTH
L1	N 00°36'35" W	9.79'
L2	S 89°24'36" W	75.00'
L3	S 89°24'36" W	75.00'
L4	S 00°36'35" E	9.82'
L5	N 00°36'35" W	9.76'

LEGEND	
⊕	FOUND NAIL AND TAB
△	SET NAIL AND TAB "P.C.P. LB 2610"
●	FOUND STEEL PIN
○	SET 5/8" IRON ROD AND CAP "P.R.M. LB 2610"
■	FOUND CONC. MONUMENT
□	SET CONC. MONUMENT
SQ. FT.	SQUARE FEET
CONC.	CONCRETE
MON.	MONUMENT
R/W	RIGHT OF WAY
INST.	INSTRUMENT NUMBER
DESC	DESCRIBED
T.	TOWNSHIP
R.	RANGE
O.R.	OFFICIAL RECORDS BOOK
PG.	PAGE
C1	CURVE NUMBER (TYPICAL)
L1	LINE NUMBER (TYPICAL)
(R)	RADIAL
(NR)	NON-RADIAL

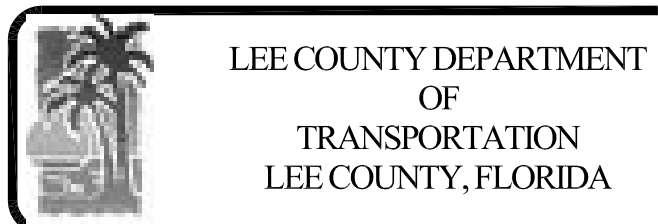


DATE	BY	REVISION DESCRIPTION

PRELIMINARY RIGHT-OF-WAY MAPS
(MAY 2020)

DONALD D. STOUTEN, P.S.M.
CERTIFICATE # 3839

JOB # DATE:
PROJ. MGR. DON STOUTEN, PSM
PROJ. DIR.
APPROVED:



THREE OAKS PARKWAY EXTENSION
AIRPORT CANAL TO THE NORTH LINE OF SECTION 27
LEE COUNTY, FLORIDA

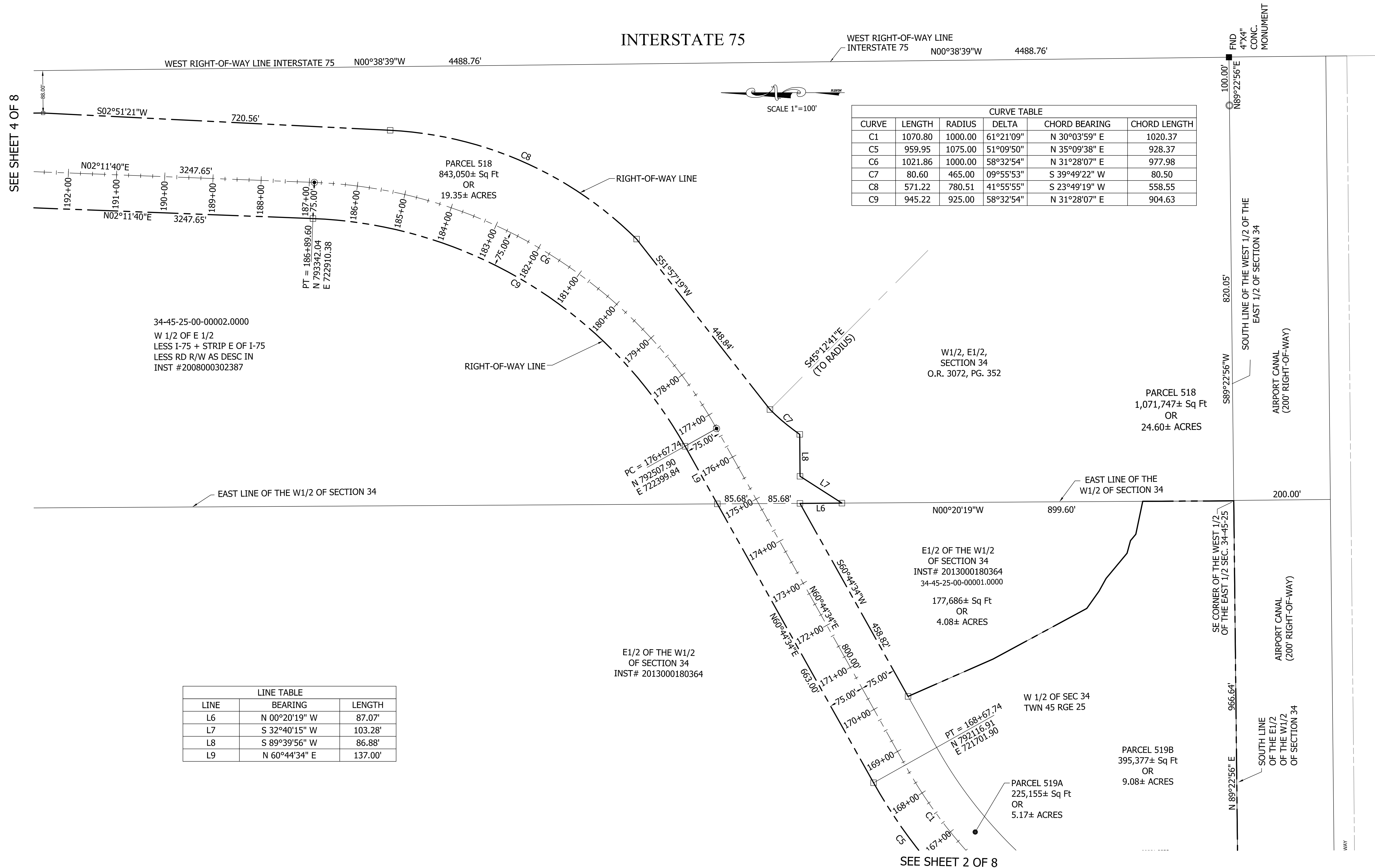
THREE OAKS PKWY EXT., PHASE I

SHEET
2 OF 8

RIGHT-OF-WAY MAPS

THREE OAKS PARKWAY EXTENSION, PHASE 1

AIRPORT CANAL TO THE NORTH LINE OF SECTION 27

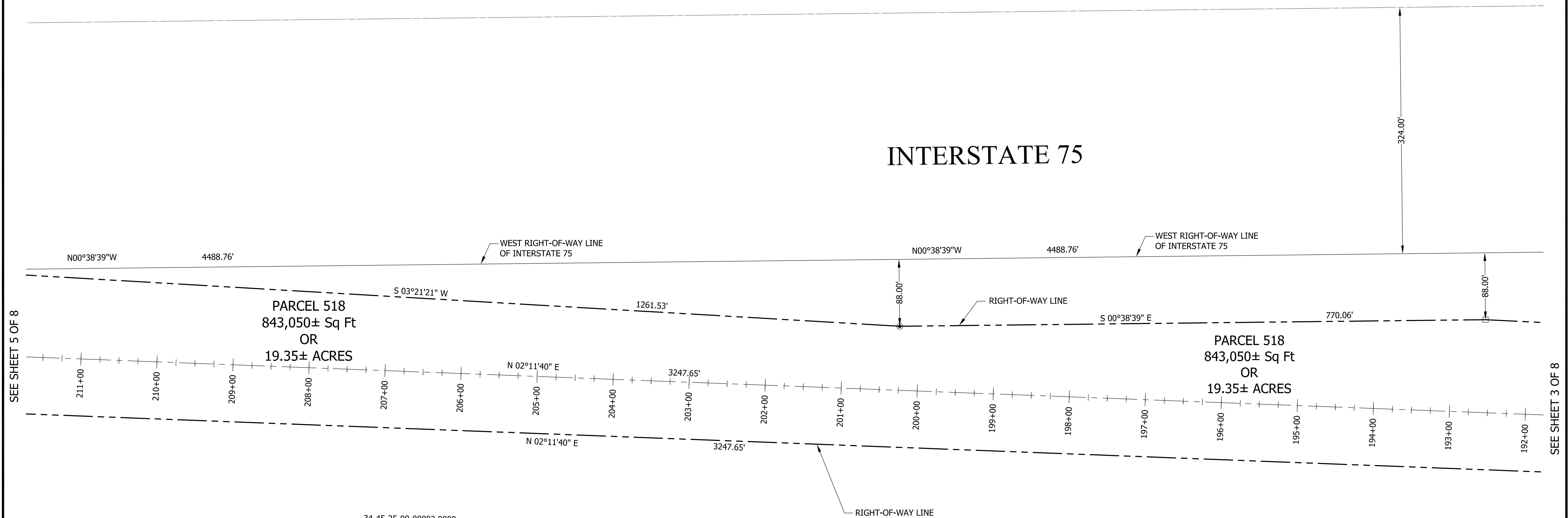


LEGEND	
	FOUND NAIL AND TAB
	SET NAIL AND TAB "P.C.P. LB 2610"
	FOUND STEEL PIN
	SET 5/8" IRON ROD AND CAP "P.R.M. LB 2610"
	FOUND CONC. MONUMENT
	SET CONC. MONUMENT
SQ. FT.	SQUARE FEET
CONC.	CONCRETE
MON.	MONUMENT
R/W	RIGHT OF WAY
INST.	INSTRUMENT NUMBER
DESC	DESCRIBED
T.	TOWNSHIP
R.	RANGE
O.R.	OFFICIAL RECORDS BOOK
PG.	PAGE
C1	CURVE NUMBER (TYPICAL)
L1	LINE NUMBER (TYPICAL)
(R)	RADIAL
(NR)	NON-RADIAL

RIGHT-OF-WAY MAPS

THREE OAKS PARKWAY EXTENSION, PHASE 1

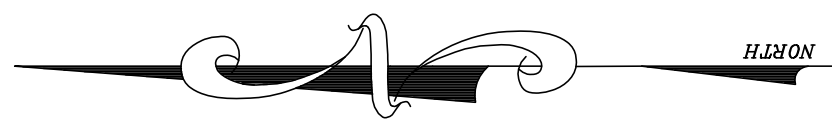
AIRPORT CANAL TO THE NORTH LINE OF SECTION 27



SEE SHEET 5 OF 8

SEE SHEET 3 OF 8

34-45-25-00-00002.0000
 W 1/2 OF E 1/2
 LESS I-75 + STRIP E OF I-75
 LESS RD R/W AS DESC IN
 INST #2008000302387



SCALE 1"=60'

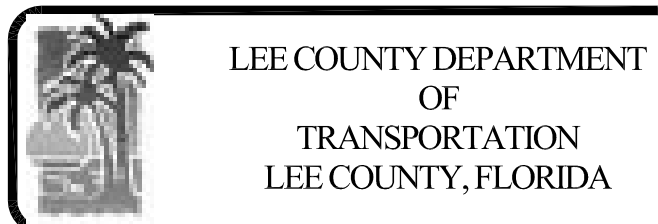
LEGEND	
⊕	FOUND NAIL AND TAB
△	SET NAIL AND TAB "P.C.P. LB 2610"
○	FOUND STEEL PIN
⊙	SET 5/8" IRON ROD AND CAP "P.R.M. LB 2610"
■	FOUND CONC. MONUMENT
□	SET CONC. MONUMENT
SQ. FT.	SQUARE FEET
CONC.	CONCRETE
MON.	MONUMENT
R/W	RIGHT OF WAY
INST.	INSTRUMENT NUMBER
DESC	DESCRIBED
T.	TOWNSHIP
R.	RANGE
O.R.	OFFICIAL RECORDS BOOK
PG.	PAGE
C1	CURVE NUMBER (TYPICAL)
L1	LINE NUMBER (TYPICAL)
(R)	RADIAL
(NR)	NON-RADIAL

DATE	BY	REVISION DESCRIPTION

PRELIMINARY RIGHT-OF-WAY MAPS
(MAY 2020)

DONALD D. STOUTEN, P.S.M.
CERTIFICATE # 3839

JOB #	DATE:
PROJ. MGR.	DON STOUTEN, PSM
PROJ. DIR.	
APPROVED:	



THREE OAKS PARKWAY EXTENSION
AIRPORT CANAL TO THE NORTH LINE OF SECTION 27
LEE COUNTY, FLORIDA

THREE OAKS PKWY EXT., PHASE I

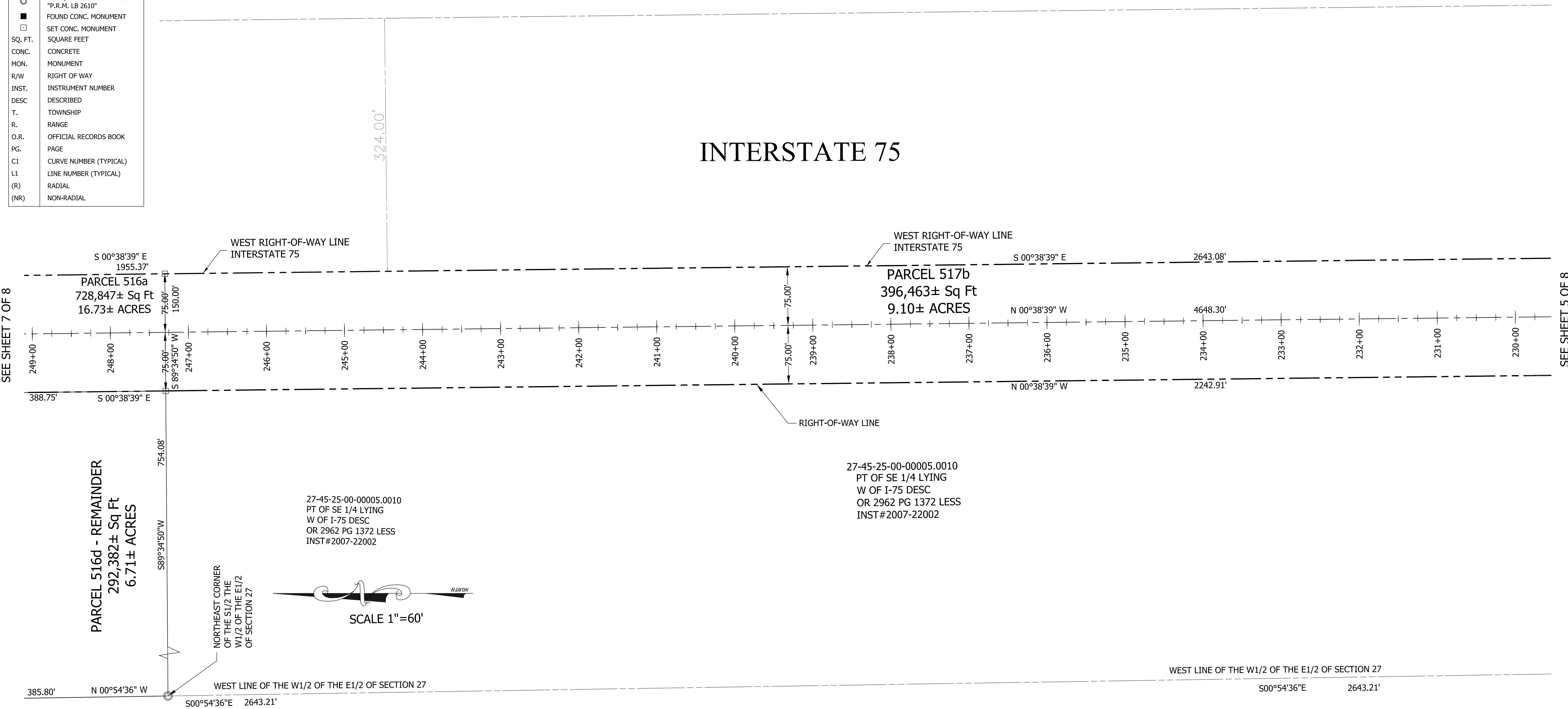
SHEET
4 OF 8

RIGHT-OF-WAY MAPS

THREE OAKS PARKWAY EXTENSION, PHASE 1

AIRPORT CANAL TO THE NORTH LINE OF SECTION 27

LEGEND	
	FOUND NAIL AND TAB
	SET NAIL AND TAB "P.C.P. LB 2610"
	FOUND STEEL PIN
	SET 5/8" IRON ROD AND CAP "P.R.M. LB 2610"
	FOUND CONC. MONUMENT
	SET CONC. MONUMENT
SQ. FT.	SQUARE FEET
CONC.	CONCRETE
MON.	MONUMENT
R/W	RIGHT OF WAY
INST.	INSTRUMENT NUMBER
DESC.	DESCRIBED
T.	TOWNSHIP
R.	RANGE
O.R.	OFFICIAL RECORDS BOOK
PG.	PAGE
C1	CURVE NUMBER (TYPICAL)
L1	LINE NUMBER (TYPICAL)
(R)	RADIAL
(NR)	NON-RADIAL



SEE SHEET 7 OF 8

SEE SHEET 5 OF 8

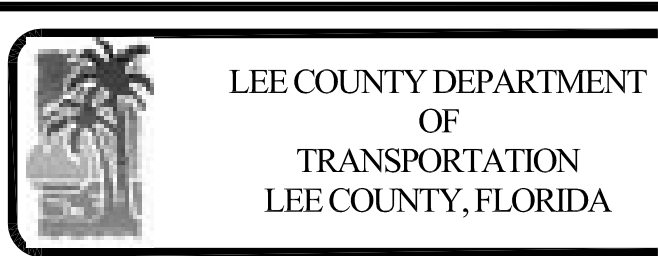
DATE	BY	REVISION DESCRIPTION

PRELIMINARY RIGHT-OF-WAY MAPS
(MAY 2020)

DONALD D. STOUTEN, P.S.M.
CERTIFICATE # 3839

JOB #	DATE

PROJ. MGR.	PROJ. DIR.	APPROVED:
DON STOUTEN, PSM		



THREE OAKS PARKWAY EXTENSION
AIRPORT CANAL TO THE NORTH LINE OF SECTION 27
LEE COUNTY, FLORIDA

THREE OAKS PKWY EXT., PHASE I

SHEET
6 OF 8

RIGHT-OF-WAY MAPS

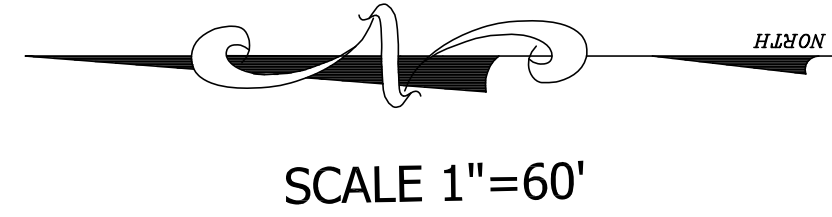
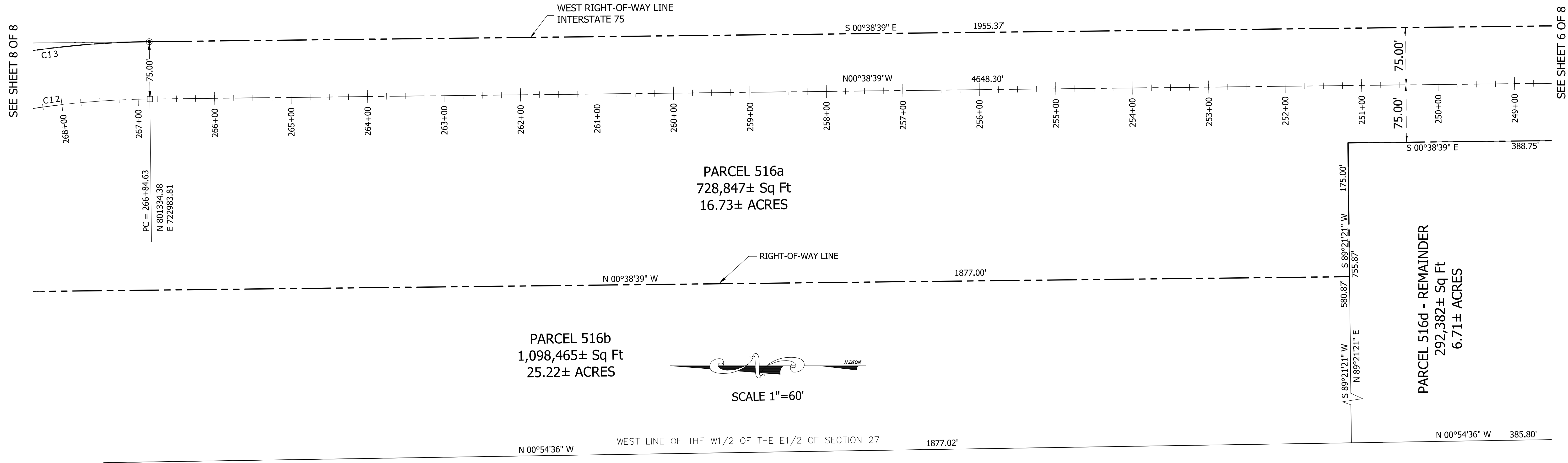
THREE OAKS PARKWAY EXTENSION, PHASE 1

AIRPORT CANAL TO THE NORTH LINE OF SECTION 27

LEGEND	
	FOUND NAIL AND TAB
	SET NAIL AND TAB "P.C.P. LB 2610"
	FOUND STEEL PIN
	SET 5/8" IRON ROD AND CAP "P.R.M. LB 2610"
	FOUND CONC. MONUMENT
	SET CONC. MONUMENT
SQ. FT.	SQUARE FEET
CONC.	CONCRETE
MON.	MONUMENT
R/W	RIGHT OF WAY
INST.	INSTRUMENT NUMBER
DESC	DESCRIBED
T.	TOWNSHIP
R.	RANGE
O.R.	OFFICIAL RECORDS BOOK
PG.	PAGE
C1	CURVE NUMBER (TYPICAL)
L1	LINE NUMBER (TYPICAL)
(R)	RADIAL
(NR)	NON-RADIAL

CURVE TABLE					
CURVE	LENGTH	RADIUS	DELTA	CHORD BEARING	CHORD LENGTH
C12	746.68	1100.00	38°53'33"	N 20°05'25" W	732.43
C13	737.86	1175.00	35°58'46"	S 18°38'02" E	725.79
C16	349.47	1025.00	19°32'05"	N 10°24'42" W	347.78

INTERSTATE 75

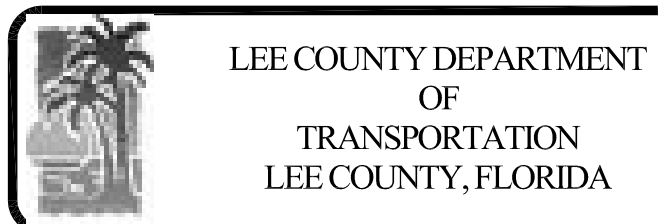


DATE	BY	REVISION DESCRIPTION

PRELIMINARY RIGHT-OF-WAY MAPS
(MAY 2020)

DONALD D. STOUTEN, P.S.M.
CERTIFICATE # 3839

JOB #	DATE
PROJ. MGR.	DON STOUTEN, PSM
PROJ. DIR.	
APPROVED:	



THREE OAKS PARKWAY EXTENSION
AIRPORT CANAL TO THE NORTH LINE OF SECTION 27
LEE COUNTY, FLORIDA

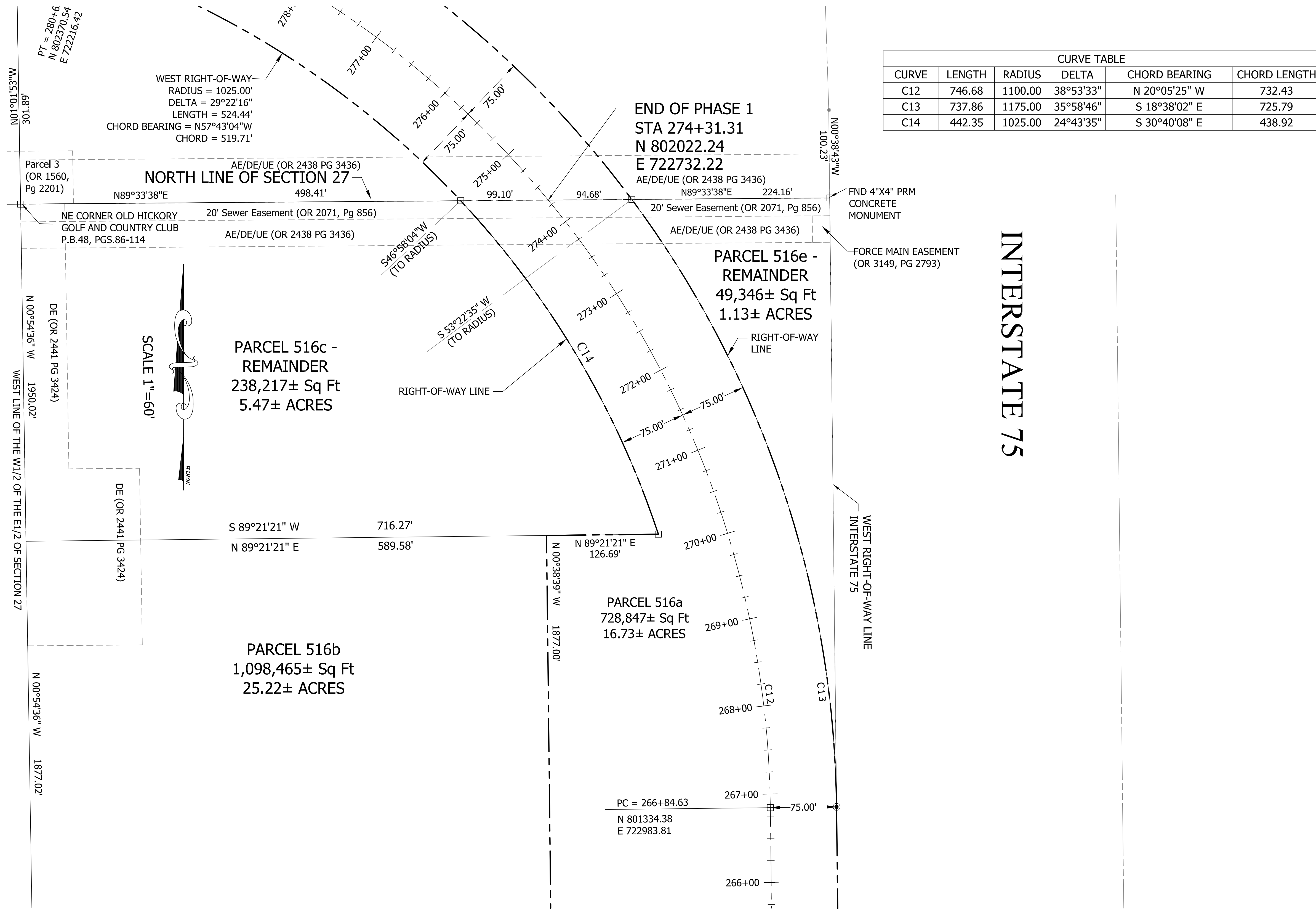
THREE OAKS PKWY EXT., PHASE I

SHEET
7 OF 8

RIGHT-OF-WAY MAPS

THREE OAKS PARKWAY EXTENSION, PHASE 1

AIRPORT CANAL TO THE NORTH LINE OF SECTION 27



CURVE TABLE					
CURVE	LENGTH	RADIUS	DELTA	CHORD BEARING	CHORD LENGTH
C12	746.68	1100.00	38°53'33"	N 20°05'25" W	732.43
C13	737.86	1175.00	35°58'46"	S 18°38'02" E	725.79
C14	442.35	1025.00	24°43'35"	S 30°40'08" E	438.92

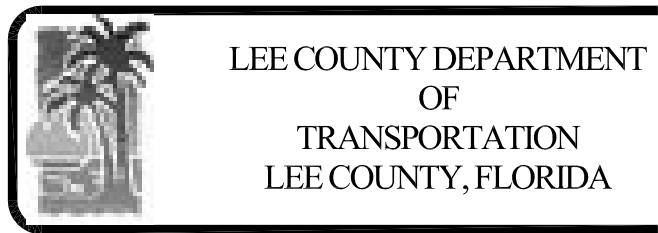
LEGEND	
◆	FOUND NAIL AND TAB
△	SET NAIL AND TAB "P.C.P. LB 2610"
●	FOUND STEEL PIN
○	SET 5/8" IRON ROD AND CAP "P.R.M. LB 2610"
■	FOUND CONC. MONUMENT
□	SET CONC. MONUMENT
SQ. FT.	SQUARE FEET
CONC.	CONCRETE
MON.	MONUMENT
R/W	RIGHT OF WAY
INST.	INSTRUMENT NUMBER
DESC	DESCRIBED
T.	TOWNSHIP
R.	RANGE
O.R.	OFFICIAL RECORDS BOOK
PG.	PAGE
C1	CURVE NUMBER (TYPICAL)
L1	LINE NUMBER (TYPICAL)
(R)	RADIAL
(NR)	NON-RADIAL

DATE	BY	REVISION DESCRIPTION

PRELIMINARY RIGHT-OF-WAY MAPS
(MAY 2020)

DONALD D. STOUTEN, P.S.M.
CERTIFICATE # 3839

JOB # DATE:
 PROJ. MGR. DON STOUTEN, PSM
 PROJ. DIR.
 APPROVED:



THREE OAKS PARKWAY EXTENSION
 AIRPORT CANAL TO THE NORTH LINE OF SECTION 27
 LEE COUNTY, FLORIDA

THREE OAKS PKWY EXT., PHASE I

SHEET
8 OF 8

