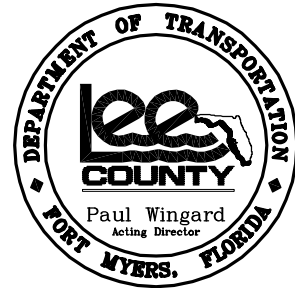


RIGHT-OF-WAY MAPS

THREE OAKS PARKWAY EXTENSION

AIRPORT CANAL TO DANIELS PARKWAY



LEE COUNTY PROJECT NO. 4053

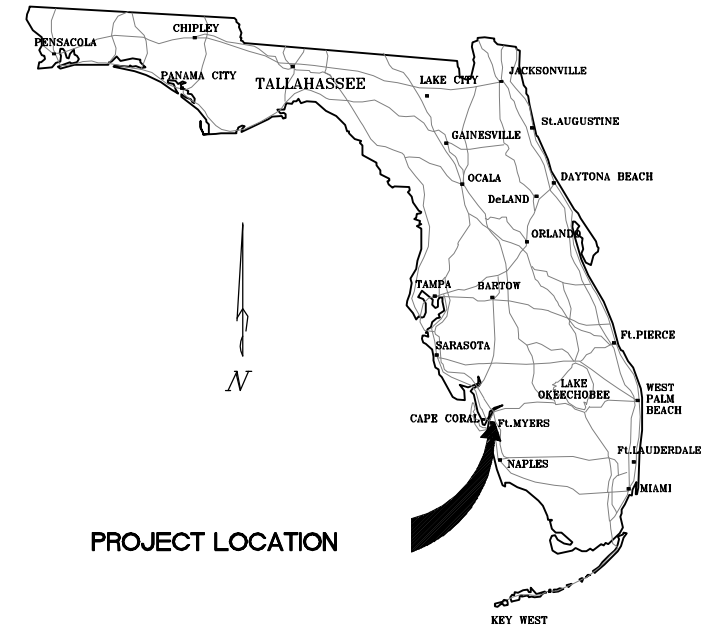
BOARD OF LEE COUNTY COMMISSIONERS

| | | | | |
|------------------------------|-------------------------------|-----------------------------|-----------------------------|-----------------------------|
| District ONE John Manning | District TWO Brian Bigelow | District THREE Ray Judah | District FOUR Tammy Hall | District FIVE Frank Mann |
|------------------------------|-------------------------------|-----------------------------|-----------------------------|-----------------------------|

LEE COUNTY MANAGER
Karen Hawes

LEE COUNTY DEPARTMENT OF TRANSPORTATION

Paul Wingard P.E., Acting Director
Sarah Clarke, Project Manager

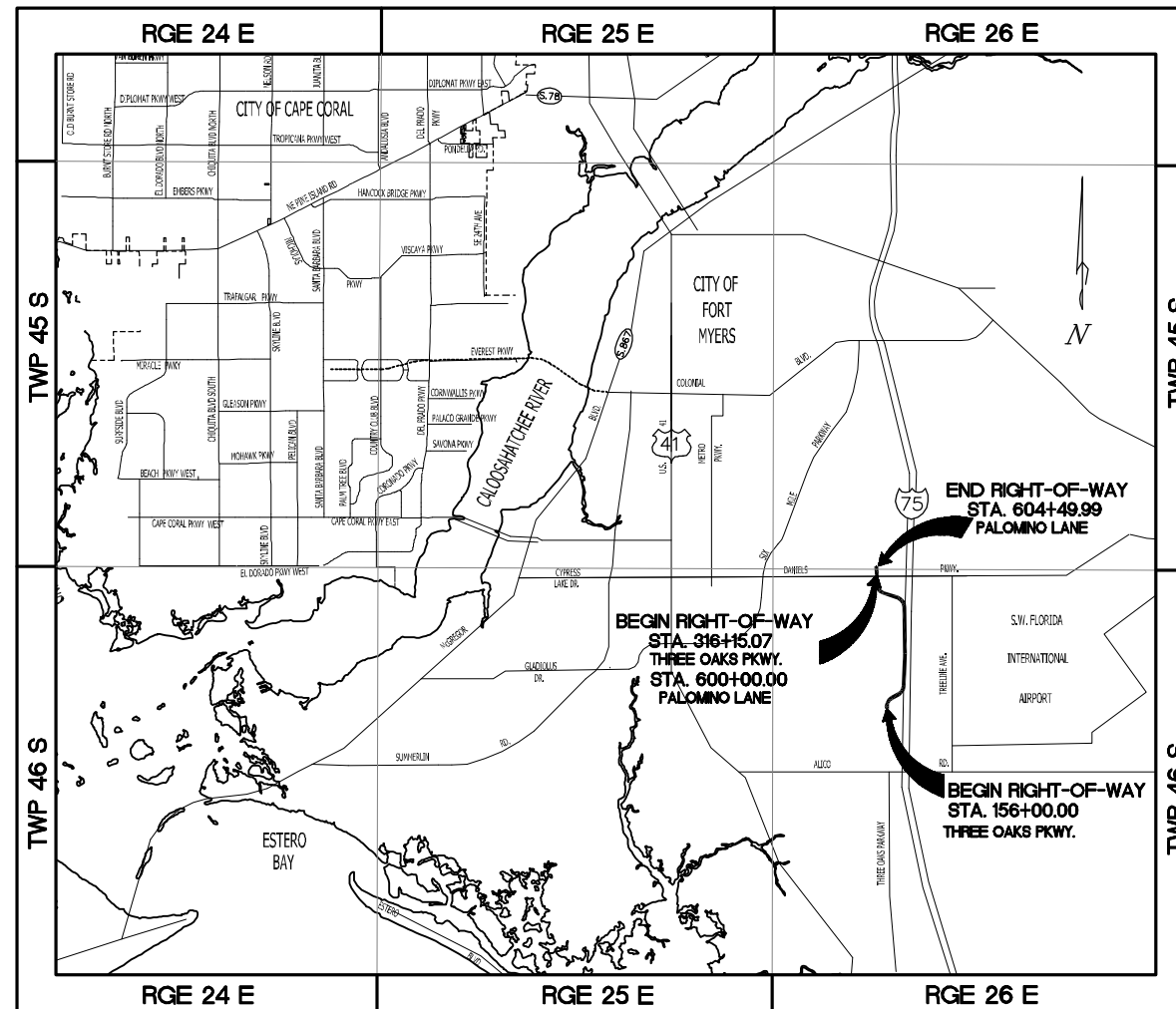


PROJECT LOCATION

VICINITY MAP
N.T.S.

INDEX OF RIGHT- OF- WAY MAPS

- 1 COVER SHEET
- 2 STA. 157+87.18 TO STA. 168+00
- 3 STA. 168+00 TO STA. 192+00
- 4 STA. 192+00 TO STA. 211+00
- 5 STA. 211+00 TO STA. 230+00
- 6 STA. 230+00 TO STA. 249+00
- 7 STA. 249+00 TO STA. 268+00
- 8 STA. 268+00 TO STA. 278+00
- 9 STA. 278+00 TO STA. 293+00
- 9 STA. 28+20 TO STA. 40+44.75 (INDIAN PONY DRIVE)
- 10 STA. 20+00 TO STA. 26+20 (INDIAN PONY DRIVE)
- 10 STA. 293+00 TO STA. 304+00
- 11 STA. 304+00 TO STA. 316+00
- 11 STA. 600+00 TO STA. 607+88.39 (PALOMINO LANE)



LOCATION MAP
N.T.S.

| LENGTH OF PROJECT | | |
|-------------------------|-----------|-------|
| | FEET | MILES |
| ROADWAY | 16,786.08 | 3.18 |
| BRIDGES | 0 | 0 |
| NET LENGTH OF PROJECT | 16,786.08 | 3.18 |
| EXCEPTIONS | 0 | 0 |
| GROSS LENGTH OF PROJECT | 16,786.08 | 3.18 |

NOTES:

1. BEARINGS BASED ON STATE PLANE COORDINATE FLORIDA WEST ZONE.
2. OWNERSHIP AND STRAP NUMBER INFORMATION OBTAINED FROM LEE COUNTY PROPERTY APPRAISERS RECORDS, APRIL 2012.
3. RIGHT-OF-WAY IS BASED ON AVALON ENGINEERING CONSTRUCTION PLANS DATED MAY, 2012.

ATTENTION IS DIRECTED TO THE FACT THAT THESE PLANS MAY HAVE BEEN REDUCED IN SIZE BY REPRODUCTION. THIS MUST BE CONSIDERED WHEN OBTAINING SCALED DATA.

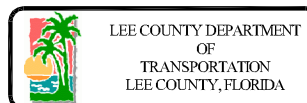
| DATE | BY | REVISION DESCRIPTION |
|------|----|----------------------|
| | | |

RIGHT-OF-WAY MAPS
(DECEMBER 5, 2012)

DONALD D. STOUTEN, P.S.M.
CERTIFICATE # 3839

JOB # _____ DATE: _____
PROJ. MGR. DON STOUTEN, PSM
PROJ. DIR. _____
APPROVED: _____

STOUTEN & ASSOCIATES, INC.
SURVEYING & MAPPING
324 Nichols Parkway West, Suite F, Cape Coral, FL 33991
Phone: (239) 442-7499 Fax: (239) 945-0244
www.stoutenandassociates.com



LEE COUNTY DEPARTMENT
OF
TRANSPORTATION
LEE COUNTY, FLORIDA

THREE OAKS PARKWAY EXTENSION
AIRPORT CANAL TO DANIELS PARKWAY
LEE COUNTY, FLORIDA

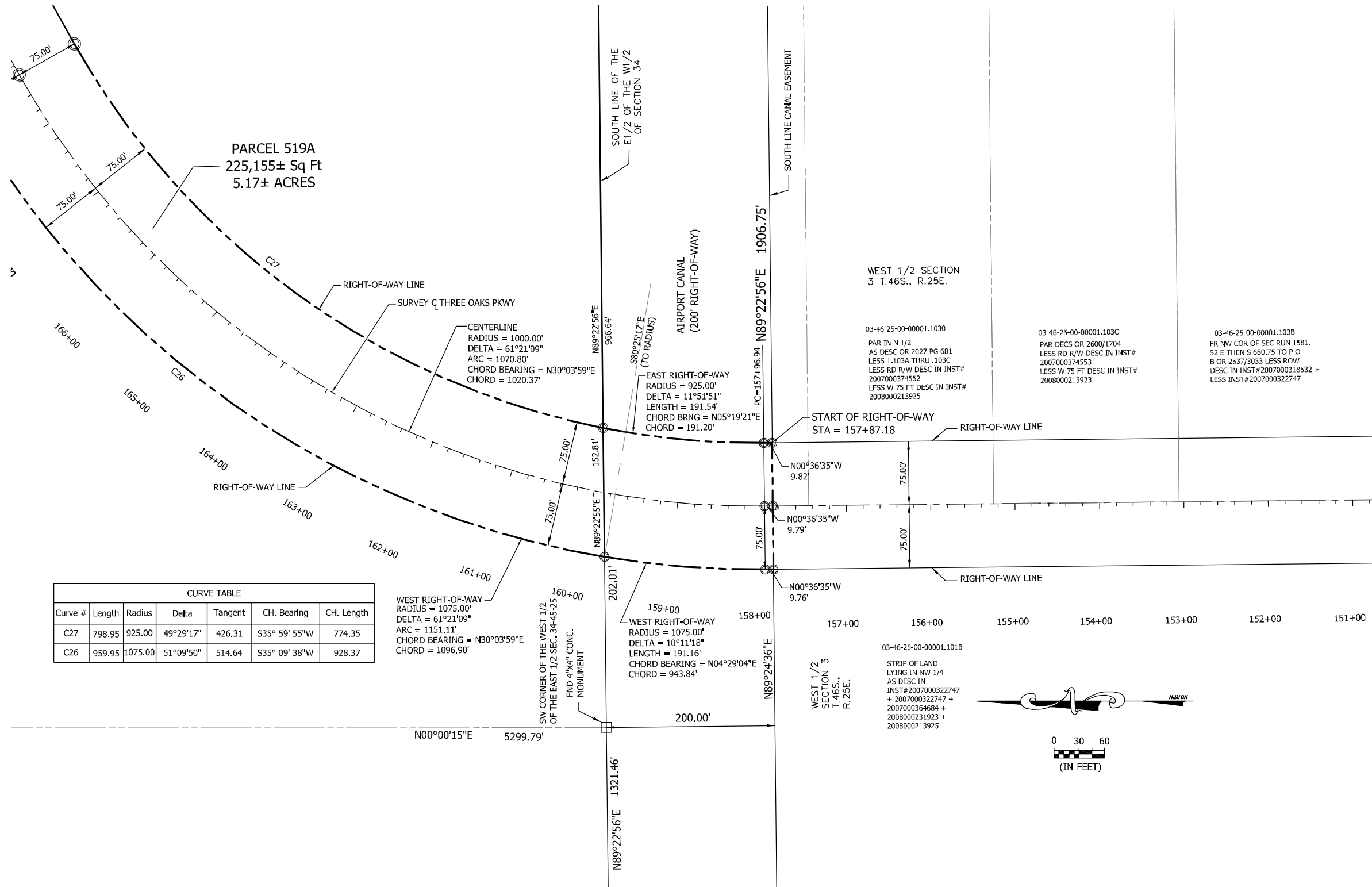
COVER SHEET
THREE OAKS PKWY EXT.
SHEET
1 OF 11

RIGHT-OF-WAY MAPS

THREE OAKS PARKWAY EXTENSION

AIRPORT CANAL TO DANIELS PARKWAY

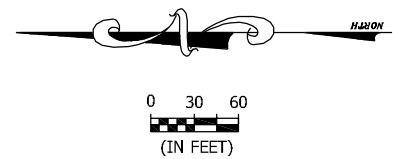
SEE SHEET 3 OF 11



| CURVE TABLE | | | | | | |
|-------------|--------|---------|-----------|---------|---------------|------------|
| Curve # | Length | Radius | Delta | Tangent | Ch. Bearing | Ch. Length |
| C27 | 798.95 | 925.00 | 49°29'17" | 426.31 | S35° 59' 55"W | 774.35 |
| C26 | 959.95 | 1075.00 | 51°09'50" | 514.64 | S35° 09' 38"W | 928.37 |

WEST RIGHT-OF-WAY
 RADIUS = 1075.00'
 DELTA = 61°21'09"
 ARC = 1151.11'
 CHORD BEARING = N30°03'59"E
 CHORD = 1096.90'

WEST RIGHT-OF-WAY
 RADIUS = 1075.00'
 DELTA = 10°11'18"
 LENGTH = 191.16'
 CHORD BEARING = N04°29'04"E
 CHORD = 943.84'



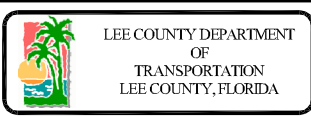
| DATE | BY | REVISION DESCRIPTION |
|------|----|----------------------|
| | | |
| | | |

RIGHT-OF-WAY MAPS
(DECEMBER 5, 2012)

DONALD D. STOUTEN, P.S.M.
2017-2024 E 3839

JOB # _____ DATE: _____
 PROJ. MGR. DON STOUTEN, PSM
 PROJ. DIR. _____
 APPROVED: _____

STOUTEN & ASSOCIATES, INC.
 SURVEYING & MAPPING
324 Nicholas Parkway West, Suite F, Cape Coral, FL 33991
 Phone: (239) 542-7499 Fax: (239) 945-0244
 www.stoutenandassociates.com



THREE OAKS PARKWAY EXTENSION
 AIRPORT CANAL TO DANIELS PARKWAY
 LEE COUNTY, FLORIDA

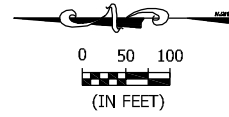
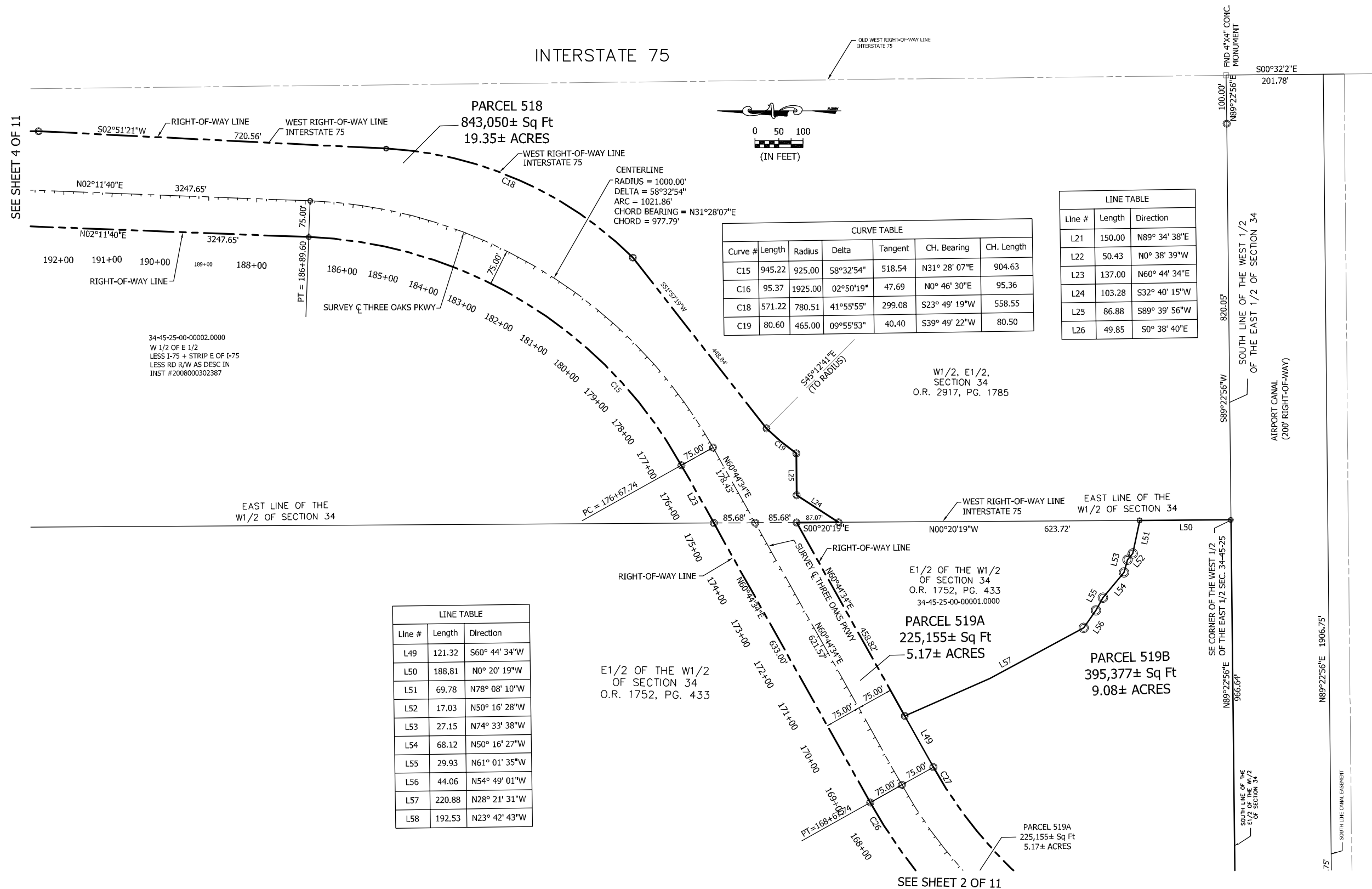
THREE OAKS PKWY EXT.

SHEET
2 OF 11

RIGHT-OF-WAY MAPS

THREE OAKS PARKWAY EXTENSION

AIRPORT CANAL TO DANIELS PARKWAY



| CURVE TABLE | | | | | | |
|-------------|--------|---------|-----------|---------|---------------|------------|
| Curve # | Length | Radius | Delta | Tangent | CH. Bearing | CH. Length |
| C15 | 945.22 | 925.00 | 58°32'54" | 518.54 | N31° 28' 07"E | 904.63 |
| C16 | 95.37 | 1925.00 | 02°50'19" | 47.69 | N0° 46' 30"E | 95.36 |
| C18 | 571.22 | 780.51 | 41°55'55" | 299.08 | S23° 49' 19"W | 558.55 |
| C19 | 80.60 | 465.00 | 09°55'53" | 40.40 | S39° 49' 22"W | 80.50 |

| LINE TABLE | | |
|------------|--------|---------------|
| Line # | Length | Direction |
| L21 | 150.00 | N89° 34' 38"E |
| L22 | 50.43 | N0° 38' 39"W |
| L23 | 137.00 | N60° 44' 34"E |
| L24 | 103.28 | S32° 40' 15"W |
| L25 | 86.88 | S89° 39' 56"W |
| L26 | 49.85 | S0° 38' 40"E |

| LINE TABLE | | |
|------------|--------|---------------|
| Line # | Length | Direction |
| L49 | 121.32 | S60° 44' 34"W |
| L50 | 188.81 | N0° 20' 19"W |
| L51 | 69.78 | N78° 08' 10"W |
| L52 | 17.03 | N50° 16' 28"W |
| L53 | 27.15 | N74° 33' 38"W |
| L54 | 68.12 | N50° 16' 27"W |
| L55 | 29.93 | N61° 01' 35"W |
| L56 | 44.06 | N54° 49' 01"W |
| L57 | 220.88 | N28° 21' 31"W |
| L58 | 192.53 | N23° 42' 43"W |

34-45-25-00-00002.0000
W 1/2 OF E 1/2
LESS I-75 + STRIP E OF I-75
LESS RD R/W AS DESC IN
INST #2008000302387

W 1/2, E 1/2,
SECTION 34
O.R. 2917, PG. 1785

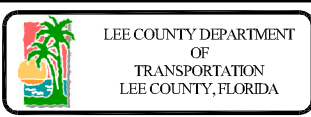
E 1/2 OF THE W 1/2
OF SECTION 34
O.R. 1752, PG. 433
34-45-25-00-00001.0000

| DATE | BY | REVISION DESCRIPTION |
|------|----|----------------------|
| | | |

RIGHT-OF-WAY MAPS
(DECEMBER 5, 2012)

DONALD D. STOUTEN, P.S.M.
2012-12-05 889

STOUTEN & ASSOCIATES, INC.
SURVEYING & MAPPING
324 Nichols Parkway West, Suite F, Cape Coral, FL 33991
Phone: (239) 542-7499 Fax: (239) 945-0244
www.stoutenandassociates.com



THREE OAKS PARKWAY EXTENSION
AIRPORT CANAL TO DANIELS PARKWAY
LEE COUNTY, FLORIDA

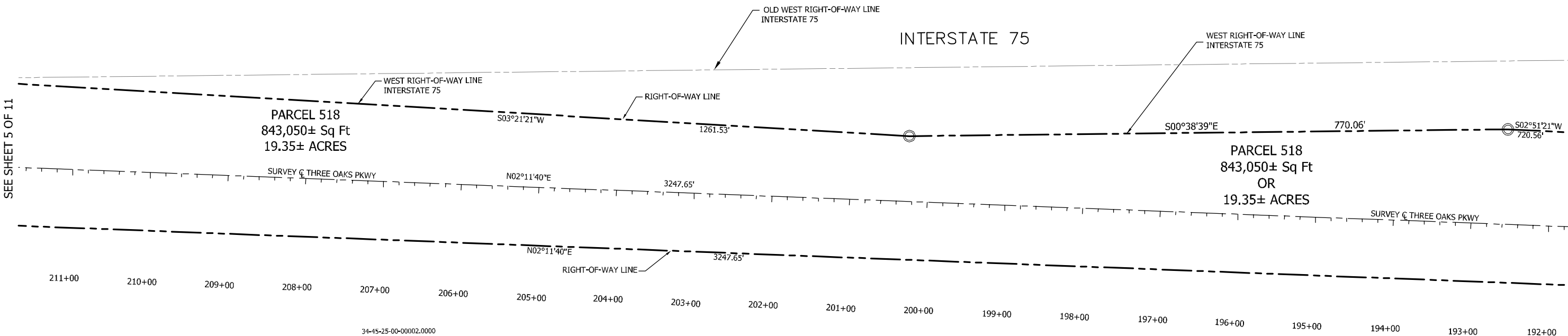
THREE OAKS PKWY EXT.

SHEET
3 OF 11

RIGHT-OF-WAY MAPS

THREE OAKS PARKWAY EXTENSION

AIRPORT CANAL TO DANIELS PARKWAY



SEE SHEET 5 OF 11

SEE SHEET 3 OF 11

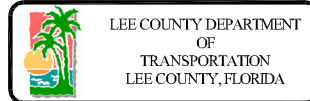
| DATE | BY | REVISION DESCRIPTION |
|------|----|----------------------|
| | | |
| | | |
| | | |

RIGHT-OF-WAY MAPS
(DECEMBER 5, 2012)

DONALD D. STOUTEN, P.S.M.
CERTIFICATE # 3839

| | |
|--------------------------------|-------|
| JOB # | DATE: |
| PROJ. MGR. DON STOUTEN, PSM | |
| PROJ. DIR. | |
| APPROVED: | |

STOUTEN & ASSOCIATES, INC.
SURVEYING & MAPPING
324 Nicholas Parkway West, Suite F, Cape Coral, FL 33991
Phone: (239) 542-7499 Fax: (239) 945-0244
www.stoutenandassociates.com



THREE OAKS PARKWAY EXTENSION
AIRPORT CANAL TO DANIELS PARKWAY
LEE COUNTY, FLORIDA

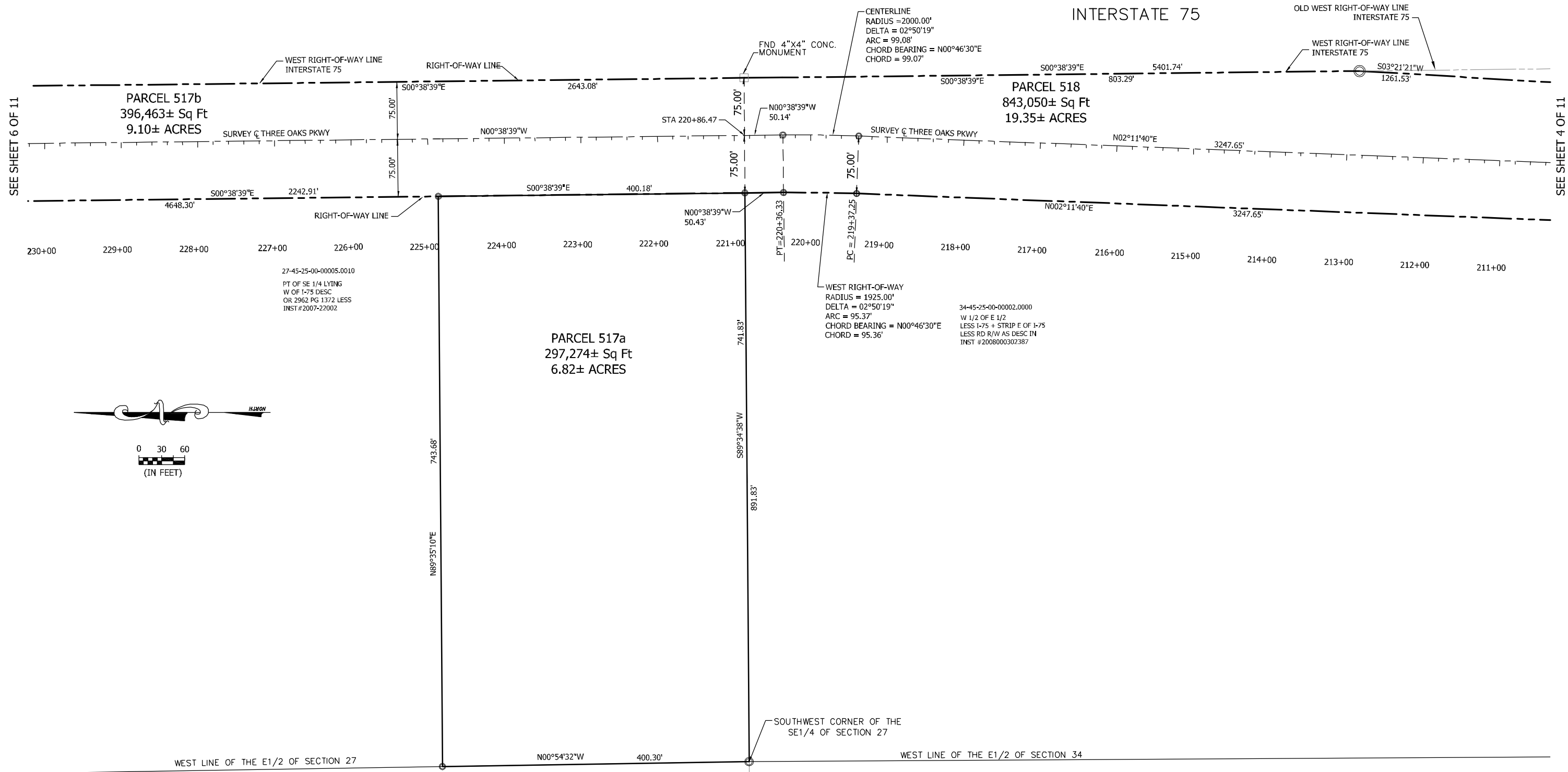
THREE OAKS PKWY EXT.

SHEET
4 OF 11

RIGHT-OF-WAY MAPS

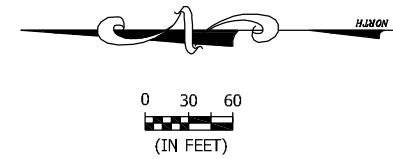
THREE OAKS PARKWAY EXTENSION

AIRPORT CANAL TO DANIELS PARKWAY



SEE SHEET 6 OF 11

SEE SHEET 4 OF 11



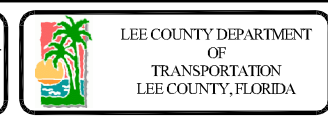
| DATE | BY | REVISION DESCRIPTION |
|------|----|----------------------|
| | | |
| | | |
| | | |

RIGHT-OF-WAY MAPS
(DECEMBER 5, 2012)

DONALD D. STOUTEN, P.S.M.
CERTIFICATE # 3839

| | |
|------------|------------------|
| JOB # | DATE: |
| PROJ. MGR. | DON STOUTEN, PSM |
| PROJ. DIR. | |
| APPROVED: | |

STOUTEN & ASSOCIATES, INC.
SURVEYING & MAPPING
324 Nicholas Parkway West, Suite F, Cape Coral, FL 33991
Phone: (239) 542-7499 Fax: (239) 945-0244
www.stoutenandassociates.com



THREE OAKS PARKWAY EXTENSION
AIRPORT CANAL TO DANIELS PARKWAY
LEE COUNTY, FLORIDA

THREE OAKS PKWY EXT.

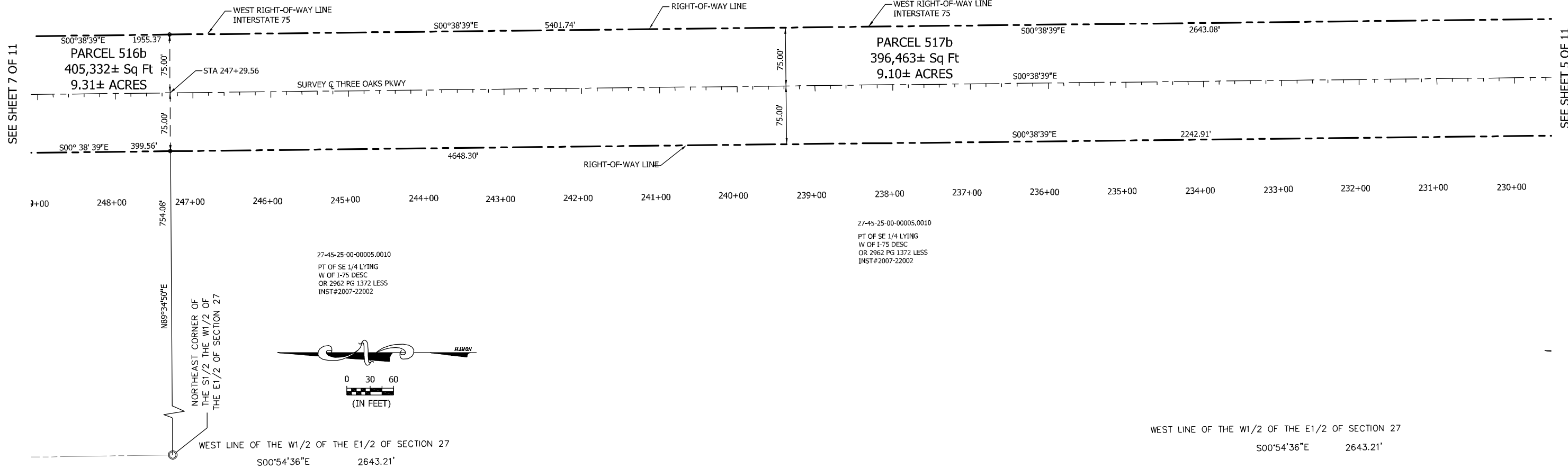
SHEET
5 OF 11

RIGHT-OF-WAY MAPS

THREE OAKS PARKWAY EXTENSION

AIRPORT CANAL TO DANIELS PARKWAY

INTERSTATE 75



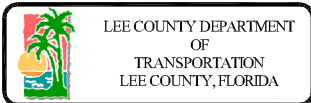
| DATE | BY | REVISION DESCRIPTION |
|------|----|----------------------|
| | | |
| | | |
| | | |

RIGHT-OF-WAY MAPS
(DECEMBER 5, 2012)

DONALD D. STOUTEN, P.S.M.
CERTIFICATE # 3839

| | |
|------------|------------------|
| JOB # | DATE: |
| PROJ. MGR. | DON STOUTEN, PSM |
| PROJ. DIR. | |
| APPROVED: | |

STOUTEN & ASSOCIATES, INC.
SURVEYING & MAPPING
324 Nicholas Parkway West, Suite F, Cape Coral, FL 33991
Phone: (239) 542-7499 Fax: (239) 945-0244
www.stoutenandassociates.com



THREE OAKS PARKWAY EXTENSION
AIRPORT CANAL TO DANIELS PARKWAY
LEE COUNTY, FLORIDA

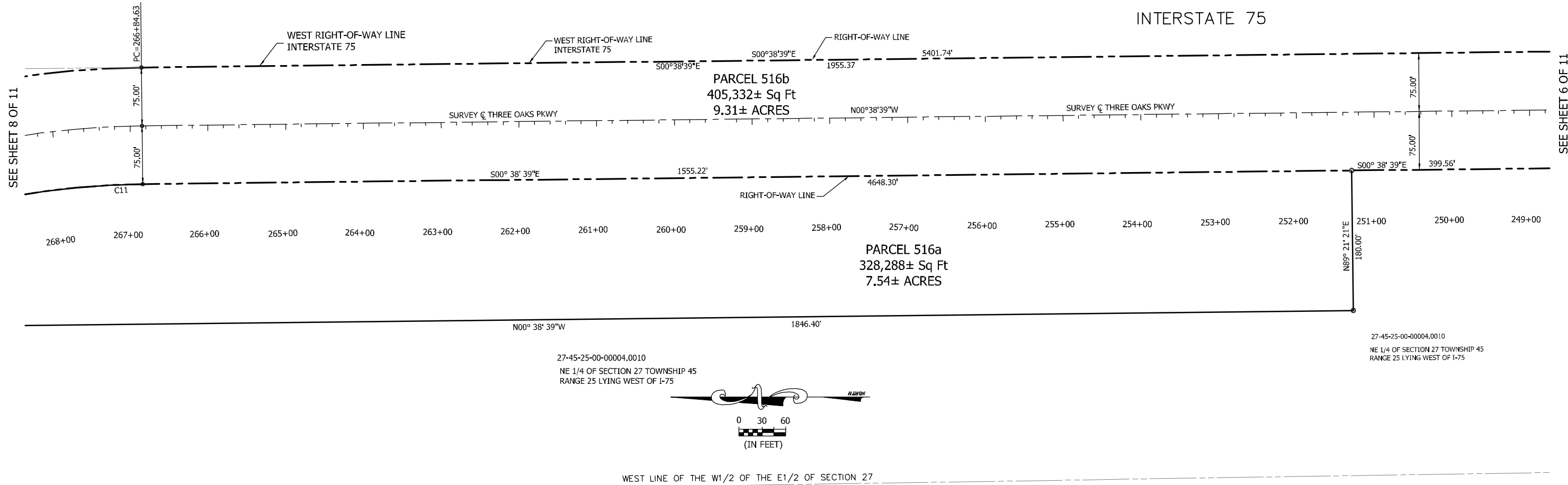
THREE OAKS PKWY EXT.

SHEET
6 OF 11

RIGHT-OF-WAY MAPS

THREE OAKS PARKWAY EXTENSION

AIRPORT CANAL TO DANIELS PARKWAY



SEE SHEET 8 OF 11

SEE SHEET 6 OF 11

27-45-25-00-00004.0010
NE 1/4 OF SECTION 27 TOWNSHIP 45
RANGE 25 LYING WEST OF I-75

27-45-25-00-00004.0010
NE 1/4 OF SECTION 27 TOWNSHIP 45
RANGE 25 LYING WEST OF I-75

| CURVE TABLE | | | | | | |
|-------------|--------|---------|-------|---------|---------------|------------|
| Curve # | Length | Radius | Delta | Tangent | Ch. Bearing | Ch. Length |
| C11 | 295.24 | 1025.00 | 16.50 | 148.65 | S8° 53' 45"E | 294.22 |
| C12 | 463.06 | 1025.00 | 25.88 | 235.55 | N30° 05' 24"W | 459.13 |

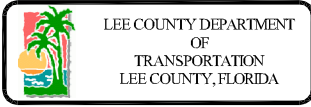
| DATE | BY | REVISION DESCRIPTION |
|------|----|----------------------|
| | | |
| | | |

RIGHT-OF-WAY MAPS
(DECEMBER 5, 2012)

DONALD D. STOUTEN, P.S.M.
20121245E # 3839

| | |
|------------|------------------|
| JOB # | DATE: |
| PROJ. MGR. | DON STOUTEN, PSM |
| PROJ. DIR. | |
| APPROVED: | |

STOUTEN & ASSOCIATES, INC.
SURVEYING & MAPPING
324 Nichols Parkway West, Suite F, Cape Coral, FL 33991
Phone: (239) 542-7499 Fax: (239) 945-0244
www.stoutenandassociates.com



THREE OAKS PARKWAY EXTENSION
AIRPORT CANAL TO DANIELS PARKWAY
LEE COUNTY, FLORIDA

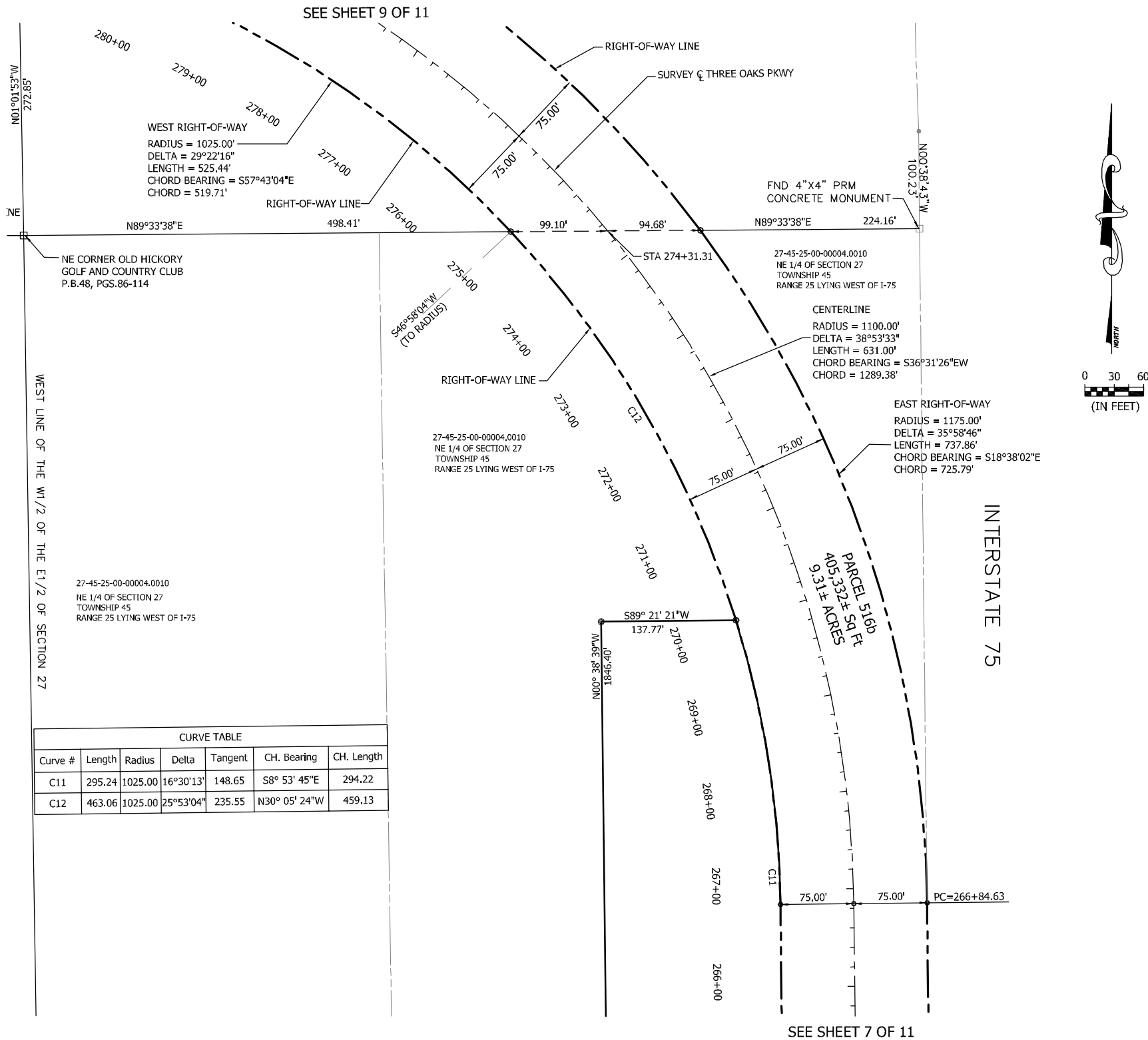
THREE OAKS PKWY EXT.

SHEET
7 OF 11

RIGHT-OF-WAY MAPS

THREE OAKS PARKWAY EXTENSION

AIRPORT CANAL TO DANIELS PARKWAY



| CURVE TABLE | | | | | | |
|-------------|--------|---------|-----------|---------|---------------|------------|
| Curve # | Length | Radius | Delta | Tangent | Ch. Bearing | Ch. Length |
| C11 | 295.24 | 1025.00 | 16°30'13" | 148.65 | S8° 53' 45"E | 294.22 |
| C12 | 463.06 | 1025.00 | 25°53'04" | 235.55 | N30° 05' 24"W | 459.13 |

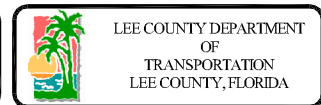
| DATE | BY | REVISION DESCRIPTION |
|------|----|----------------------|
| | | |
| | | |

RIGHT-OF-WAY MAPS
(DECEMBER 5, 2012)

DONALD D. STOUTEN, P.S.M.
CERTIFICATE # 3839

| | |
|------------|------------------|
| JOB # | DATE: |
| PROJ. MGR. | DON STOUTEN, PSM |
| PROJ. DIR. | |
| APPROVED: | |

STOUTEN & ASSOCIATES, INC.
SURVEYING & MAPPING
324 Nicholas Parkway West, Suite F, Cape Coral, FL 33991
Phone: (239) 942-7499 Fax: (239) 945-0244
www.stoutenandassociates.com



THREE OAKS PARKWAY EXTENSION
AIRPORT CANAL TO DANIELS PARKWAY
LEE COUNTY, FLORIDA

THREE OAKS PKWY EXT.

SHEET
8 OF 11

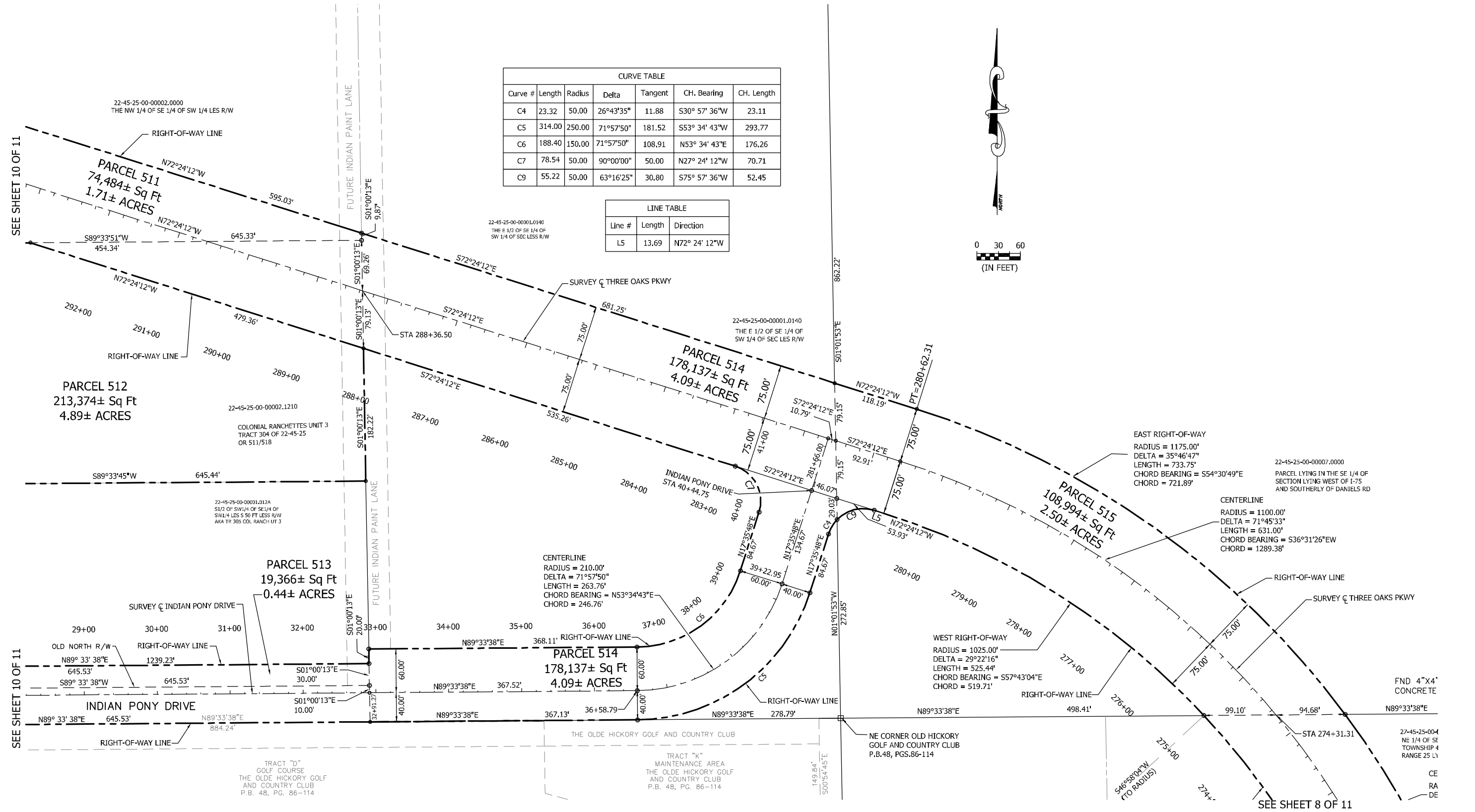
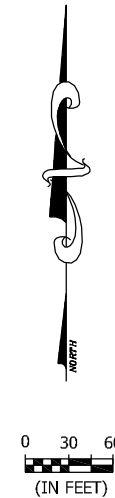
RIGHT-OF-WAY MAPS

THREE OAKS PARKWAY EXTENSION

AIRPORT CANAL TO DANIELS PARKWAY

| CURVE TABLE | | | | | | |
|-------------|--------|--------|-----------|---------|---------------|------------|
| Curve # | Length | Radius | Delta | Tangent | Ch. Bearing | Ch. Length |
| C4 | 23.32 | 50.00 | 26°43'35" | 11.88 | S30° 57' 36"W | 23.11 |
| C5 | 314.00 | 250.00 | 71°57'50" | 181.52 | S53° 34' 43"W | 293.77 |
| C6 | 188.40 | 150.00 | 71°57'50" | 108.91 | N53° 34' 43"E | 176.26 |
| C7 | 78.54 | 50.00 | 90°00'00" | 50.00 | N27° 24' 12"W | 70.71 |
| C9 | 55.22 | 50.00 | 63°16'25" | 30.80 | S75° 57' 36"W | 52.45 |

| LINE TABLE | | |
|------------|--------|---------------|
| Line # | Length | Direction |
| L5 | 13.69 | N72° 24' 12"W |



SEE SHEET 10 OF 11

SEE SHEET 10 OF 11

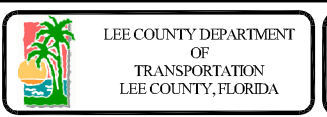
SEE SHEET 8 OF 11

| DATE | BY | REVISION DESCRIPTION |
|------|----|----------------------|
| | | |
| | | |

RIGHT-OF-WAY MAPS
(DECEMBER 5, 2012)

DONALD D. STOUTEN, P.S.M.
C2PT1241E # 3839

STOUTEN & ASSOCIATES, INC.
SURVEYING & MAPPING
324 Nicholas Parkway West, Suite F, Cape Coral, FL 33991
Phone: (239) 442-7499 Fax: (239) 945-0244
www.stoutenandassociates.com



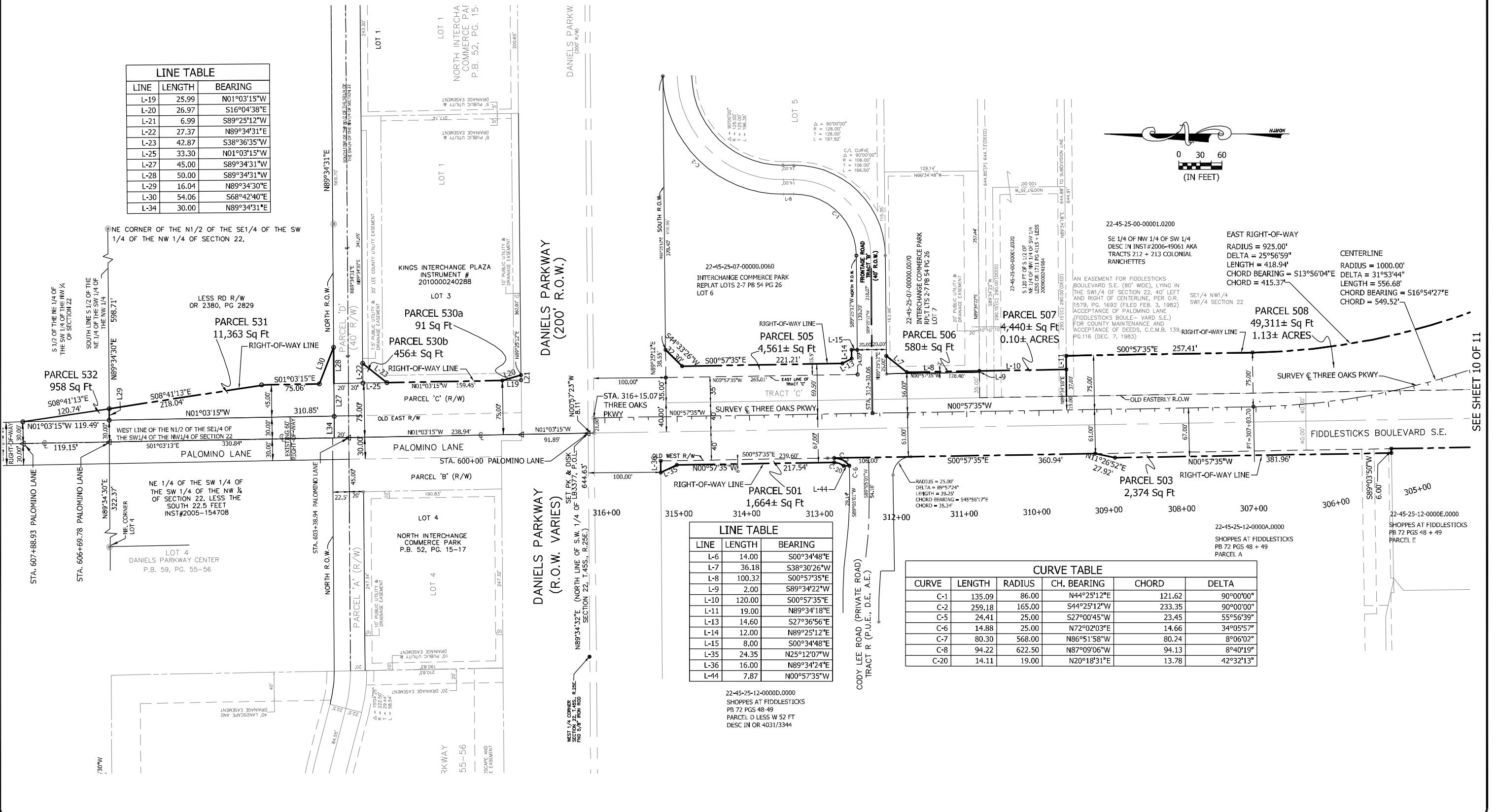
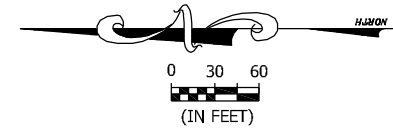
THREE OAKS PARKWAY EXTENSION
AIRPORT CANAL TO DANIELS PARKWAY
LEE COUNTY, FLORIDA

THREE OAKS PKWY EXT.
INDIAN PONY DRIVE

SHEET
9 OF 11

RIGHT-OF-WAY MAPS THREE OAKS PARKWAY EXTENSION AIRPORT CANAL TO DANIELS PARKWAY

| LINE TABLE | | |
|------------|--------|-------------|
| LINE | LENGTH | BEARING |
| L-19 | 25.99 | N01°03'15"W |
| L-20 | 26.97 | S16°04'38"E |
| L-21 | 6.99 | S89°25'12"W |
| L-22 | 27.37 | N89°34'31"E |
| L-23 | 42.87 | S38°36'35"W |
| L-25 | 33.30 | N01°03'15"W |
| L-27 | 45.00 | S89°34'31"W |
| L-28 | 50.00 | S89°34'31"W |
| L-29 | 16.04 | N89°34'30"E |
| L-30 | 54.06 | S68°42'40"E |
| L-34 | 30.00 | N89°34'31"E |



| LINE TABLE | | |
|------------|--------|-------------|
| LINE | LENGTH | BEARING |
| L-6 | 14.00 | S00°34'48"E |
| L-7 | 36.18 | S38°30'26"W |
| L-8 | 100.32 | S00°57'35"E |
| L-9 | 2.00 | S89°34'22"W |
| L-10 | 120.00 | S00°57'35"E |
| L-11 | 19.00 | N89°34'18"E |
| L-13 | 14.60 | S27°36'56"E |
| L-14 | 12.00 | N89°25'12"E |
| L-15 | 8.00 | S00°34'48"E |
| L-35 | 24.35 | N25°12'07"W |
| L-36 | 16.00 | N89°34'24"E |
| L-44 | 7.87 | N00°57'35"W |

| CURVE TABLE | | | | | |
|-------------|--------|--------|-------------|--------|-----------|
| CURVE | LENGTH | RADIUS | CH. BEARING | CHORD | DELTA |
| C-1 | 135.09 | 86.00 | N44°25'12"E | 121.62 | 90°00'00" |
| C-2 | 259.18 | 165.00 | S44°25'12"W | 233.35 | 90°00'00" |
| C-5 | 24.41 | 25.00 | S27°00'45"W | 23.45 | 55°56'39" |
| C-6 | 14.88 | 25.00 | N72°02'03"E | 14.66 | 34°05'57" |
| C-7 | 80.30 | 568.00 | N86°51'58"W | 80.24 | 8°06'02" |
| C-8 | 94.22 | 622.50 | N87°09'06"W | 94.13 | 8°40'19" |
| C-20 | 14.11 | 19.00 | N20°18'31"E | 13.78 | 42°32'13" |

| DATE | BY | REVISION DESCRIPTION |
|------|----|----------------------|
| | | |

RIGHT-OF-WAY MAPS
(DECEMBER 5, 2012)

DONALD D. STOUTEN, P.S.M.
C2PT1241E # 3839

STOUTEN & ASSOCIATES, INC.
SURVEYING & MAPPING
324 Nicholas Parkway West, Suite F, Cape Coral, FL 33991
Phone: (239) 442-7499 Fax: (239) 945-0244
www.stoutenandassociates.com



THREE OAKS PARKWAY EXTENSION
AIRPORT CANAL TO DANIELS PARKWAY
LEE COUNTY, FLORIDA

THREE OAKS PKWY EXT.

SHEET
11 OF 11