

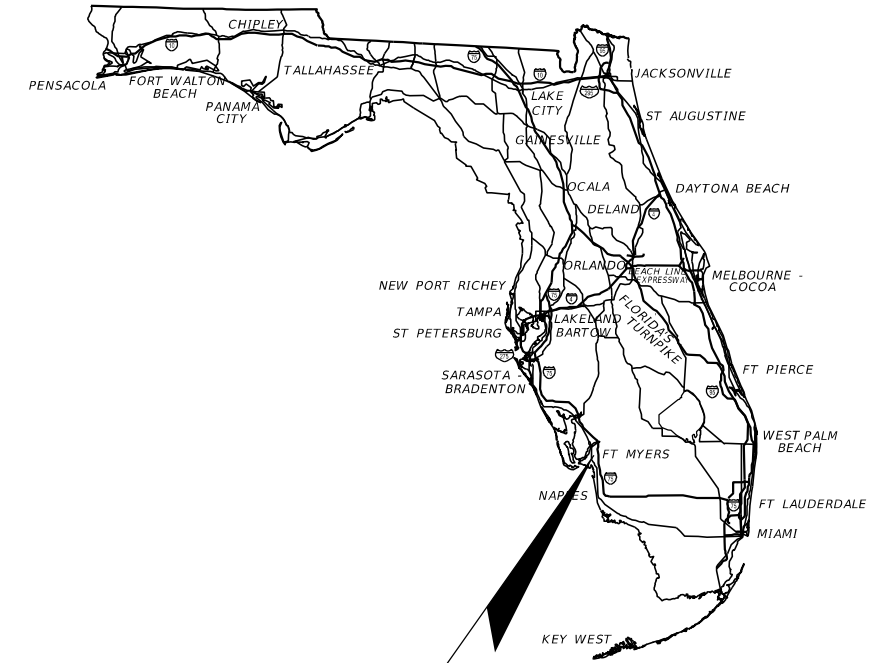
LEE COUNTY
DEPARTMENT OF TRANSPORTATION

ORTIZ AVENUE WIDENING

FROM SR 884 TO SR 82

LEE COUNTY
COUNTY ROAD NO. 865

LIGHTING PLANS



PROJECT LOCATION
<https://goo.gl/maps/pkUqGrXMQNMU8KZv7>

INDEX OF LIGHTING PLANS

<i>SHEET NO.</i>	<i>SHEET DESCRIPTION</i>
L-1	KEY SHEET
L-1A	NOTES TO REVIEWER
L-2 - L-3	TABULATION OF QUANTITIES
L-4	GENERAL NOTES
L-5	POLE DATA
L-6 - L-19	LIGHTING PLANS

60% SUBMITTAL
OCTOBER 2020



LIGHTING PLANS
ENGINEER OF RECORD:
BURAK KONUK P.E.
P.E. NO.: 81581
KISINGER CAMPO & ASSOCIATES CORP.
CONSULTING ENGINEERS & PLANNERS
201 N. FRANKLIN STREET, SUITE 400
TAMPA, FL 33602
PHONE: (813) 871-5331
CONTRACT NO.: CN18-8479

LDOT PROJECT MANAGER:
ROBERT K. PHELAN, P.E.


SHEET
NO.

L-1

THE OFFICIAL RECORD OF THIS SHEET IS THE ELECTRONIC FILE DIGITALLY SIGNED AND SEALED UNDER RULE 61G15-23.004, F.A.C.

NOTES TO REVIEWER


1. PER LEE COUNTY DIRECTIVE, THE POLES HAVE BEEN PLACED IN THE MEDIAN WHEREVER POSSIBLE.
2. SOME OF THE MEDIAN SECTIONS ARE TOO NARROW TO ACCOMMODATE THE LIGHT POLES, WHILE ALSO MAINTAINING ADEQUATE CLEAR ZONE. THIS CLEAR ZONE CRITERIA INCLUDES MINIMUM LATERAL OFFSETS OF 20' FROM THE EDGE OF THE INSIDE TRAVEL LANE AND 14' FROM THE OPPOSING LEFT TURN LANE, PER TABLE 215.2.2 OF THE FDOT DESIGN MANUAL.
3. IN MEDIAN LOCATIONS WHERE THE CLEAR ZONE COULD NOT BE MET, THE DUAL ARM POLE WAS CONVERTED TO TWO SINGLE ARM POLES, WHICH WERE PLACED ON OUTSIDE SHOULDER.

<i>REVISIONS</i>				 KCA <small>KISINGER CAMPO & ASSOCIATES</small>	<i>LEE COUNTY</i>			NOTES TO REVIEWER	SHEET NO.
<i>DATE</i>	<i>DESCRIPTION</i>	<i>DATE</i>	<i>DESCRIPTION</i>		<i>DEPARTMENT OF TRANSPORTATION</i>				L-1A
					<i>ROAD</i>	<i>COUNTY</i>	<i>CONTRACT NO.</i>		
				201 N. Franklin Street, Suite 400 Tampa, Florida 33602 Florida Certificate of Authorization No. 02317 Engineer of Record: Burak Konuk, P.E. P.E. No.: 81581	CR 865 (ORTIZ AVE.)	LEE COUNTY	CN18-8479		

THE OFFICIAL RECORD OF THIS SHEET IS THE ELECTRONIC FILE DIGITALLY SIGNED AND SEALED UNDER RULE 61G15-23.004, F.A.C.

TABULATION OF QUANTITIES

PAY ITEM NO.	DESCRIPTION	UNIT	SHEET NUMBERS														TOTAL THIS SHEET		GRAND TOTAL						
			L-6		L-7		L-8		L-9		L-10		L-11		L-12		PLAN	FINAL	PLAN	FINAL					
			PLAN	FINAL	PLAN	FINAL	PLAN	FINAL	PLAN	FINAL	PLAN	FINAL	PLAN	FINAL											
630-2-11	CONDUIT, F&I, OPEN TRENCH	LF																							
630-2-12	CONDUIT, F&I, DIRECTIONAL BORE	LF																							
635-2-11	PULL & SPLICE BOX, F&I, 13" x 24" COVER SIZE	EA																							
639-1-122	ELECTRICAL POWER SERVICE, F&I, UNDERGROUND, METER PURCHASED BY CONTRACTOR	AS																							
641-2-11	PRESTRESSED CONCRETE POLE, F&I, TYPE P-11 PEDESTAL	EA																							
715-1-12	LIGHTING CONDUCTORS, F&I, INSULATED, NO 8 TO 6	LF																							
715-7-11	LOAD CENTER, F&I, SECONDARY VOLTAGE	EA																							
715-500-1	POLE CABLE DISTRIBUTION SYSTEM, F&I CONVENTIONAL	EA																							
715-511-140	LIGHT POLE COMPLETE-SPECIAL DESIGN, F&I, SINGLE ARM SHOULDER MOUNT, ALUMINUM, 40'	EA																							
715-512-140	LIGHT POLE COMPLETE-SPECIAL DESIGN, F&I, DOUBLE ARM MEDIAN MOUNT, ALUMINUM, 40'	EA																							

REVISIONS				 201 N. Franklin Street, Suite 400 Tampa, Florida 33602 Florida Certificate of Authorization No. 02317 Engineer of Record: Burak Konuk, P.E. P.E. No.: 81581	LEE COUNTY DEPARTMENT OF TRANSPORTATION			TABULATION OF QUANTITIES (1)	SHEET NO.
DATE	DESCRIPTION	DATE	DESCRIPTION		ROAD	COUNTY	CONTRACT NO.		L-2
					CR 865 (ORTIZ AVE.)	LEE COUNTY	CN18-8479		

THE OFFICIAL RECORD OF THIS SHEET IS THE ELECTRONIC FILE DIGITALLY SIGNED AND SEALED UNDER RULE 61G15-23.004, F.A.C.

TABULATION OF QUANTITIES

PAY ITEM NO.	DESCRIPTION	UNIT	SHEET NUMBERS														TOTAL THIS SHEET		GRAND TOTAL	
			L-13		L-14		L-15		L-16		L-17		L-18		L-19		PLAN	FINAL	PLAN	FINAL
			PLAN	FINAL	PLAN	FINAL	PLAN	FINAL	PLAN	FINAL	PLAN	FINAL	PLAN	FINAL						
630-2-11	CONDUIT, F&I, OPEN TRENCH	LF																		
630-2-12	CONDUIT, F&I, DIRECTIONAL BORE	LF																		
635-2-11	PULL & SPLICE BOX, F&I, 13" x 24" COVER SIZE	EA																		
639-1-122	ELECTRICAL POWER SERVICE, F&I, UNDERGROUND, METER PURCHASED BY CONTRACTOR	AS																		
641-2-11	PRESTRESSED CONCRETE POLE, F&I, TYPE P-11 PEDESTAL	EA																		
715-1-12	LIGHTING CONDUCTORS, F&I, INSULATED, NO 8 TO 6	LF																		
715-7-11	LOAD CENTER, F&I, SECONDARY VOLTAGE	EA																		
715-500-1	POLE CABLE DISTRIBUTION SYSTEM, F&I CONVENTIONAL	EA																		
715-511-140	LIGHT POLE COMPLETE-SPECIAL DESIGN, F&I, SINGLE ARM SHOULDER MOUNT, ALUMINUM, 40'	EA																		
715-512-140	LIGHT POLE COMPLETE-SPECIAL DESIGN, F&I, DOUBLE ARM MEDIAN MOUNT, ALUMINUM, 40'	EA																		

REVISIONS			
DATE DESCRIPTION DATE DESCRIPTION			

201 N. Franklin Street, Suite 400 Tampa, Florida 33602 Florida Certificate of Authorization No. 02317 Engineer of Record: Burak Konuk, P.E. P.E. No.: 81581	LEE COUNTY DEPARTMENT OF TRANSPORTATION	TABULATION OF QUANTITIES (2)	SHEET NO. L-3
ROAD COUNTY CONTRACT NO.	CR 865 (ORTIZ AVE.) LEE COUNTY CN18-8479		

THE OFFICIAL RECORD OF THIS SHEET IS THE ELECTRONIC FILE DIGITALLY SIGNED AND SEALED UNDER RULE 61G15-23.004, F.A.C.

LIGHTING GENERAL NOTES

- PRIOR TO ANY EQUIPMENT ORDER, THE CONTRACTOR SHALL SUBMIT FOR APPROVAL EQUIPMENT SPECIFICATION OR DESIGN DATA FOR ALL MATERIAL PROPOSED FOR THE PROJECT. THESE MUST SPECIFICALLY INCLUDE:
 - LUMINAIRE PHOTOMETRICS
 - POLE STRENGTH CALCULATIONS AND POLE SHOP DRAWINGS FOR PAY ITEMS 715-511-140 AND 715-512-140
 - POLE FRANGIBILITY TEST
 - ANCHOR BOLT DESIGN CALCULATIONS AND SHOP DRAWINGS
 - DISTRIBUTION POINT ELECTRICAL EQUIPMENT
- THE LOCATIONS OF EXISTING UTILITIES, AS SHOWN ON THESE PLANS, ARE APPROXIMATE AND BASED ON THE INFORMATION FURNISHED TO THE ENGINEER BY THE UTILITY OWNER(S) AND ARE SHOWN AS NOTICE TO THE CONTRACTOR THAT UNDERGROUND UTILITIES EXIST. THE CONTRACTOR SHALL NOTIFY THE UTILITY COMPANY OWNER(S) FOR LOCATION AND STAKING OF UNDERGROUND FACILITIES BEFORE EXCAVATING.
- STATE OF FLORIDA STATUTE 556 (2008) REQUIRES THAT BEFORE EXCAVATION, NOTICE BE GIVEN TO THE SUNSHINE STATE ONE CALL OF FLORIDA, INC. (SSOCOF) A MINIMUM OF TWO (2) FULL BUSINESS DAYS AT 1-800-432-4770. NOT ALL UTILITY COMPANIES ARE MEMBERS OF SSOCOF.
- THE LOCATION OF THE POLES, CONDUCTORS, CONDUITS, JUNCTION BOXES, AND SERVICE POLES ARE DIAGRAMMATIC ONLY AND MAY BE SHIFTED BY THE ENGINEER TO ACCOMMODATE LOCAL CONDITIONS AND EXISTING UTILITY LOCATIONS.
- ALUMINUM POLES, LUMINAIRES, AND BASES SHALL BE FABRICATED IN ACCORDANCE WITH AASHTO'S "STANDARD SPECIFICATIONS FOR STRUCTURAL SUPPORTS FOR HIGHWAY SIGNS, LUMINAIRES, AND TRAFFIC SIGNALS" AND SHALL HAVE BEEN TESTED BY FHWA APPROVED METHODS (LATEST EDITION). CERTIFICATION FOR TESTS SHALL BE SUBMITTED WITH THE SHOP DRAWINGS.
- SHOP DRAWING SUBMITTAL DATA SHALL INCLUDE COMPUTER PRINTOUT SHOWING HORIZONTAL FOOT CANDLE LEVELS TO BE OBTAINED USING SUBMITTED LUMINAIRES ON THIS PROJECT. AT FINAL INSPECTION THE CONTRACTOR SHALL VERIFY THE HORIZONTAL FOOT CANDLE LEVELS ON THE ROADWAY WITH AN APPROVED CURRENTLY CALIBRATED LIGHT METER AND SUBMIT REPORT FOR APPROVAL.
- ALL ELECTRICAL WORK SHALL MEET ALL REQUIREMENTS OF THE LATEST EDITIONS OF THE NATIONAL ELECTRICAL CODE (NEC), THE NATIONAL ELECTRICAL SAFETY CODE (NEC) AND THE STATE OF FLORIDA DEPARTMENT OF TRANSPORTATION (FDOT) STANDARD SPECIFICATION FOR ROAD AND BRIDGE CONSTRUCTION. ALL COMPONENTS SHALL BE PROPERLY GROUNDED AND BONDED PER N.E.C. REQUIREMENTS.
- IN ACCORDANCE WITH N.E.C., IDENTIFY ALL CIRCUITS AND EQUIPMENT WITH "LAMACOID TAGS". INSTALL SIMILAR TAGS OF STAINLESS STEEL IDENTIFYING CIRCUIT FOR EACH LUMINAIRE AT ACCESS HANDHOLE FOR EACH POLE.
- THE CONTRACTOR SHALL NOTIFY LCEC AT LEAST 48 HOURS PRIOR TO ANY INSTALLATION THAT IS WITHIN 20 FEET OF ENERGIZED ELECTRICAL CONDUCTORS. EXTREME CAUTION SHALL BE EXERCISED AT ALL TIMES IN PERFORMANCE OF WORK AROUND THE PRIMARY HIGH VOLTAGE COMPONENTS.
- PULLING INSTRUCTIONS: CONNECT PULLING DEVICES TO COPPER WIRE AND NOT TO THE JACKET AND MEET THE MANUFACTURER'S REQUIREMENTS. USE PULLING COMPOUND PER MANUFACTURER'S REQUIREMENTS. ALL BENDS SHALL NOT BE LESS THAN THE RECOMMENDED BY THE NEC OR NESC FOR THE CABLE USED.
- CONTRACTOR SHALL FURNISH AND INSTALL AN ALUMINUM IDENTIFICATION TAG ON EACH ROADWAY LIGHTING STANDARD. TAGS SHALL BE 2 INCHES X 8 INCHES IN SIZE WITH WHITE LETTERS ON BLUE BACKGROUND, ATTACHED WITH RIVETS (NO SCREWS). NUMBERS SHALL BE PER THE POLE IDENTIFICATION TAG DETAIL. COST OF TAGS SHALL BE INCLUDED IN THE BID ITEMS FOR THE LIGHT POLE COMPLETE. BOTTOM OF TAG SHALL BE INSTALLED 5 FEET ABOVE FINISHED GRADE. COORDINATE THE POLE NUMBER WITH LEE COUNTY MAINTENANCE.
- THE CONTRACTOR SHALL STAKE ALL POLE LOCATIONS AND REQUEST UTILITY COMPANIES TO LOCATE AND STAKE UNDERGROUND UTILITIES PRIOR TO EXCAVATING.
- DIRECTIONAL BORE OPERATIONS, IF USED, SHALL MEET THE REQUIREMENTS OF THE FDOT UTILITY ACCOMMODATION MANUAL (LATEST EDITION).
- AT LOCATIONS WHERE UNDERGROUND UTILITIES ARE WITHIN TWO FEET OF THE LIGHT POLE FOUNDATIONS OR CONDUIT RUNS, AS DETERMINED BY THE ENGINEER, THE CONTRACTOR WILL HAND DIG THE FIRST FOUR FEET OF THE HOLE FOR THE POLE FOUNDATION AND CONDUIT RUN.
- AT CONDUIT TRENCHES SHALL BE BACKFILLED COMPLETELY TO PROVED SAFE CROSSING BY THE END OF EACH WORKING DAY OR WHENEVER THE WORK ZONE BECOMES INACTIVE. THE CONTRACTOR SHALL NOT OPEN ANY AREA THAT CANNOT BE BACKFILLED IN THE SAME WORK PERIOD.
- ALL EXCESS DIRT AND DEBRIS EXCAVATED FROM POLE FOUNDATIONS SHALL BE REMOVED DAILY TO AREAS APPROVED BY THE ENGINEERS AND PAID FOR UNDER PAY ITED 715-512-140.
- THE CONTRACTOR SHALL MAINTAIN ACCESS TO ALL SIDE STREETS, PRIVATE AND COMMERCIAL DRIVEWAYS AT ALL TIMES DURING THE CONSTRUCTION OPERATION.

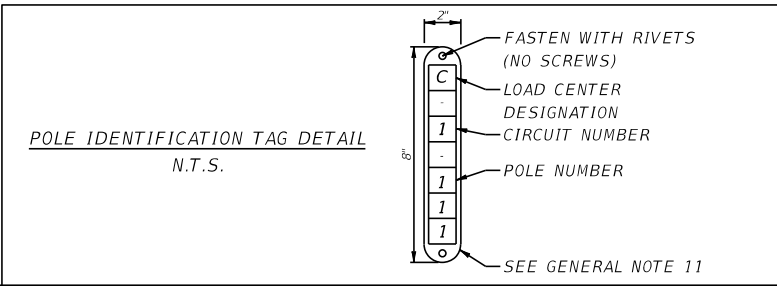
- THE LIGHTING SYSTEM WILL BE MAINTAINED BY LEE COUNTY UPON FINAL ACCEPTANCE. THE CONTRACTOR SHALL SUBMIT "AS-BUILT" PLANS TO THE ENGINEER PRIOR TO FINAL ACCEPTANCE.
- THE CONTRACTOR SHALL SUBMIT TO THE ENGINEER OF RECORD SHOP DRAWINGS DETAILING THE LAYOUT OF THE ELECTRICAL EQUIPMENT INSIDE THE DISTRIBUTION POINT LIGHTING ELECTRICAL ENCLOSURE.
- ALL CONDUCTORS SHALL HAVE THWN-2 600 VOLT INSULATION.
- CONDUIT LOCATIONS AS SHOWN ON THE PLANS ARE DIAGRAMMATIC. CONDUITS MUST BE PLACED WITHIN THE ROADWAY LIMITS, BUT CAN BE ADJUSTED TO FIT AROUND EXISTING AND PROPOSED UTILITIES. WHERE PLANNED LOCATION OF LIGHTING CONDUIT RUNS 36" UNDER PAVEMENT IS FOUND TO CONFLICT WITH UNDERGROUND UTILITIES, THE LIGHTING CONDUIT POSITION SHALL BE ALTERED VERTICALLY OR HORIZONTALLY TO AVOID THE CONFLICT AS RECOMMENDED BY THE CONTRACTOR AND APPROVED BY THE ENGINEER. A 24" ABSOLUTE MINIMUM DEPTH SHALL BE MAINTAINED WHERE LIGHTING CONDUITS ARE RELOCATED CLOSER THAN 36" BELOW THE GROUND SURFACE AND SHALL BE PLACED IN AN ADDITIONAL 3" PVC SLEEVE OR BACKFILLED WITH A MINIMUM OF 4" X 4" OF CONCRETE. COST OF SUCH TREATMENT WILL BE INCIDENTAL TO PAY ITEMS PROVIDED.
- THE CONTRACTOR SHALL PREPARE ACCURATELY DIMENSIONED "AS-BUILT" PLANS OF FINAL POLE, CONTROLLER, AND CONDUIT LOCATIONS. "AS-BUILT" PLANS SHALL BE REVIEWED AND APPROVED BY THE ENGINEER PRIOR TO FINAL ACCEPTANCE. AFTER THE "AS-BUILT" PLANS ARE APPROVED, THE CONTRACTOR SHALL SUBMIT TWO COPIES TO THE RESIDENT ENGINEER AND ONE COPY TO THE LEE COUNTY MAINTENANCE. COST OF SUCH PREPARATION SHALL BE INCIDENTAL TO THE PAY ITEMS PROVIDED.
- SPLICES AND CONNECTIONS MADE IN PULL BOXES SHALL BE LIMITED TO THE SERVICE POINT AND CONDUIT JUNCTION WITH MULTI-DIRECTIONAL CONDUITS AS INDICATED ON THE PLANS. THE SPLICES AND CONNECTION MADE AT THESE POINTS SHOULD BE PROPERLY TAPED, PROVIDED WITH HEAT SHRINK TUBES OR CAPS TO WATERPROOF THESE CONNECTIONS. SPLICES SHALL BE ENCAPSULATED.
- ALL CONDUITS SHALL BE MANDREL TESTED AND CLEANED. CONDUIT PLACED FOR FUTURE USE SHALL HAVE 1/4" POLYESTER CORD PULLED IN PLACE AND CAPPED, WITH NOTATION INSIDE CONDUIT AS TO LOCATION OF OPPOSITE END. PLACE PULL BOXES TO MARK ENDS OF EMPTY CONDUITS.
- THE CONTRACTOR SHALL CONTACT THE POWER COMPANY TO DETERMINE IF A SERVICE PROCESSING FEE IS REQUIRED. THE FEE SHALL BE INCLUDED AS PART OF PAYMENT FOR THE LOAD CENTER.
- THE CONTRACTOR SHALL USE THE CONCRETE FOUNDATION PER INDEX 715-002 (SCREW TYPE FOUNDATION IS NOT ALLOWED).
- ALL POLE FOUNDATIONS SHOULD BE 2" ABOVE GRADE AT ALL LOCATIONS. IF ADJUSTMENTS ARE NECESSARY PLEASE NOTIFY ENGINEER.
- WHEN PRACTICAL, EXISTING LIGHTING IS TO REMAIN IN SERVICE DURING ALL PHASES OF CONSTRUCTION OR UNTIL NEW LIGHTING IS INSTALLED AND PLACED IN SERVICE.

CONVENTIONAL ROADWAY LIGHTING ILLUMINATION CRITERIA

AVERAGE INITIAL INTENSITY (HORIZONTAL FOOT CANDLES)	1.5 FOOT CANDLES
UNIFORMITY RATIO AVG./MIN.	4:1 OR LESS
MAX./MIN.	10:1 OR LESS
VEILING LUMINANCE RATIO	0.3:1 OR LESS
DESIGN WIND SPEED	170 MPH

SIGNALIZED INTERSECTION LIGHTING ILLUMINATION CRITERIA (NEW RECONSTRUCTION)

AVERAGE INITIAL INTENSITY (HORIZONTAL FOOT CANDLES)	3.0 FOOT CANDLES
AVERAGE INITIAL INTENSITY (VERTICAL FOOT CANDLES)	2.3 FOOT CANDLES
UNIFORMITY RATIO AVG./MIN.	4:1 OR LESS
MAX./MIN.	10:1 OR LESS
VEILING LUMINANCE RATIO	0.3:1 OR LESS
DESIGN WIND SPEED	170 MPH



LIGHTING LEGEND

SYMBOLS	DESCRIPTION
	THE BASIS OF DESIGN USED WAS: MANUFACTURER: HOLOPHANE MGLEDM, MODEL: MONGOOSE MEDIUM LED P7, SINGLE ARM LIGHT POLE. PHOTOMETRIC CURVE: R2 TOP MOUNTED FIXTURE, 255 WATT, 480 VOLT, 40" MOUNTING HEIGHT. FILE NAME: MGLEDM_P7_40K_XXXXX_WR. IES.
	THE BASIS OF DESIGN USED WAS: MANUFACTURER: HOLOPHANE MGLEDM, MODEL: MONGOOSE MEDIUM LED P7, DUAL ARM LIGHT POLE. PHOTOMETRIC CURVE: R2 TOP MOUNTED FIXTURE, 255 WATT, 480 VOLT, 40" MOUNTING HEIGHT. FILE NAME: MGLEDM_P7_40K_XXXXX_WR. IES.
	2" HDPE CONDUIT, DIRECTIONAL BORE, WITH CONDUCTORS INSIDE (CONDUIT AND CONDUCTOR SIZE AS SHOWN ON PLAN SHEETS), RUN ONE COPPER BOND CONDUCTOR (TW GREEN INSULATION) INSIDE CONDUIT WITH OTHER CONDUCTORS.
	2" SCH. 40 PVC CONDUIT, OPEN TRENCH, WITH CONDUCTORS INSIDE (CONDUIT AND CONDUCTOR SIZE AS SHOWN ON PLAN SHEETS), RUN ONE COPPER BOND CONDUCTOR (TW GREEN INSULATION) INSIDE CONDUIT WITH OTHER CONDUCTORS.
	PULL BOX.
	PROPOSED LOAD CENTER RATED FOR 240 / 480V OPERATION, SINGLE PHASE, 3 WIRE.
	EXISTING POWER POLE


REVISIONS				201 N. Franklin Street, Suite 400 Tampa, Florida 33602 Florida Certificate of Authorization No. 02317 Engineer of Record: Burak Konuk, P.E. P.E. No.: 81581	LEE COUNTY DEPARTMENT OF TRANSPORTATION			SHEET NO.
DATE	DESCRIPTION	DATE	DESCRIPTION		ROAD	COUNTY	CONTRACT NO.	
					CR 865 (ORTIZ AVE.)	LEE COUNTY	CN18-8479	GENERAL NOTES
								L-4

THE OFFICIAL RECORD OF THIS SHEET IS THE ELECTRONIC FILE DIGITALLY SIGNED AND SEALED UNDER RULE 61G15-23.004, F.A.C.

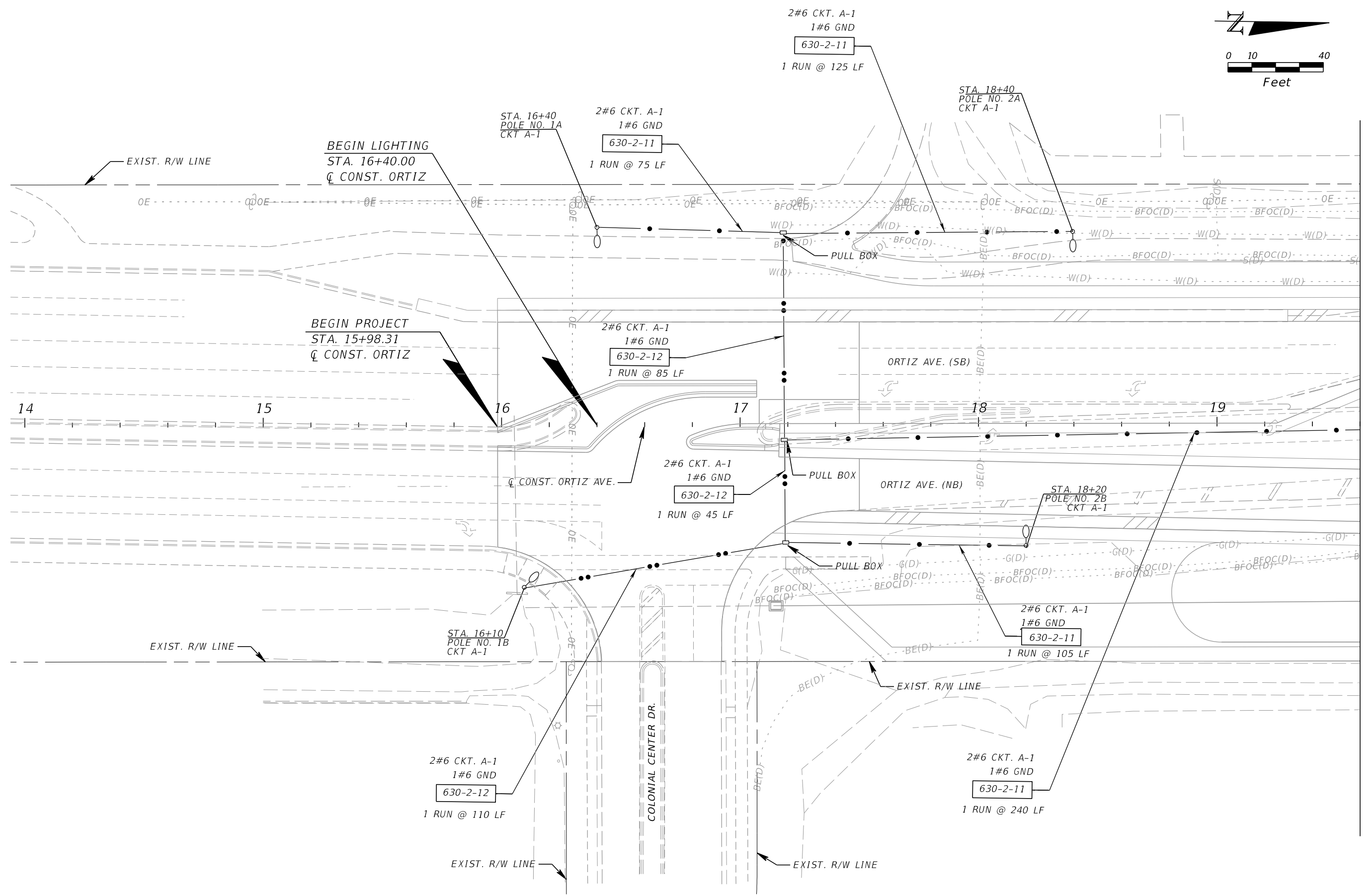
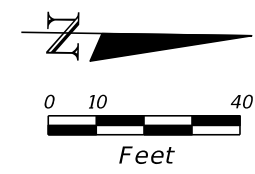
LIGHTING DATA

POLE NO.	CIRCUIT	STATION	ARM LENGTH (FT)	LUMINAIRE WATTAGE	MOUNTING HEIGHT (FT)	POLE SETBACK	PAY ITEM
1A	A-1	16+40	12'	1 X 255 W	40'	39' LT FOP TO EOT	715-511-140
1B	A-1	16+10	12'	1 X 255 W	40'	13' RT FOP TO EOT	715-511-140
2A	A-1	18+40	12'	1 X 255 W	40'	38' LT FOP TO EOT	715-511-140
2B	A-1	18+20	12'	1 X 255 W	40'	13' RT FOP TO EOT	715-511-140
3	A-1	20+30	8' / 8'	2 X 255 W	40'	0' COP TO C ORTIZ AVENUE	715-512-140
4	A-1	22+00	8' / 8'	2 X 255 W	40'	0' COP TO C ORTIZ AVENUE	715-512-140
5	A-1	23+80	8' / 8'	2 X 255 W	40'	0' COP TO C ORTIZ AVENUE	715-512-140
6	A-1	25+60	8' / 8'	2 X 255 W	40'	5' LT FOP TO C ORTIZ AVENUE	715-512-140
7	A-1	27+20	8' / 8'	2 X 255 W	40'	6' RT FOP TO C ORTIZ AVENUE	715-512-140
8	A-2	29+20	8' / 8'	2 X 255 W	40'	6' RT FOP TO C ORTIZ AVENUE	715-512-140
9	A-2	31+00	8' / 8'	2 X 255 W	40'	0' COP TO C ORTIZ AVENUE	715-512-140
10	A-2	32+70	8' / 8'	2 X 255 W	40'	0' COP TO C ORTIZ AVENUE	715-512-140
11	A-2	34+30	8' / 8'	2 X 255 W	40'	1' RT FOP TO C ORTIZ AVENUE	715-512-140
12	A-2	36+30	8' / 8'	2 X 255 W	40'	0' COP TO C ORTIZ AVENUE	715-512-140
13	A-2	38+00	8' / 8'	2 X 255 W	40'	1' RT FOP TO C ORTIZ AVENUE	715-512-140
14	A-2	39+70	8' / 8'	2 X 255 W	40'	0' COP TO C ORTIZ AVENUE	715-512-140
15	A-2	41+20	8' / 8'	2 X 255 W	40'	0' COP TO C ORTIZ AVENUE	715-512-140
16	B-1	56+00	8' / 8'	2 X 255 W	40'	0' COP TO C ORTIZ AVENUE	715-512-140
17	B-1	58+00	8' / 8'	2 X 255 W	40'	0' COP TO C ORTIZ AVENUE	715-512-140
18	B-1	60+00	8' / 8'	2 X 255 W	40'	0' COP TO C ORTIZ AVENUE	715-512-140
19	B-1	61+80	8' / 8'	2 X 255 W	40'	1' LT FOP TO C ORTIZ AVENUE	715-512-140
20	B-1	63+60	8' / 8'	2 X 255 W	40'	0' COP TO C ORTIZ AVENUE	715-512-140
21	B-1	65+40	8' / 8'	2 X 255 W	40'	0' COP TO C ORTIZ AVENUE	715-512-140
22	B-1	67+20	8' / 8'	2 X 255 W	40'	0' COP TO C ORTIZ AVENUE	715-512-140
23	B-1	69+00	8' / 8'	2 X 255 W	40'	5' LT FOP TO C ORTIZ AVENUE	715-512-140
24	B-1	70+50	8' / 8'	2 X 255 W	40'	4' LT FOP TO C ORTIZ AVENUE	715-512-140
25	B-1	72+30	8' / 8'	2 X 255 W	40'	5' RT FOP TO C ORTIZ AVENUE	715-512-140
26	B-1	74+10	8' / 8'	2 X 255 W	40'	6' RT FOP TO C ORTIZ AVENUE	715-512-140
27	B-1	75+90	8' / 8'	2 X 255 W	40'	0' COP TO C ORTIZ AVENUE	715-512-140
28	B-1	77+70	8' / 8'	2 X 255 W	40'	0' COP TO C ORTIZ AVENUE	715-512-140
29	B-2	79+70	8' / 8'	2 X 255 W	40'	5' RT FOP TO C ORTIZ AVENUE	715-512-140
30	B-2	81+70	8' / 8'	2 X 255 W	40'	8' RT FOP TO C ORTIZ AVENUE	715-512-140
31	B-2	83+50	8' / 8'	2 X 255 W	40'	8' RT FOP TO C ORTIZ AVENUE	715-512-140
32	B-2	85+10	8' / 8'	2 X 255 W	40'	8' RT FOP TO C ORTIZ AVENUE	715-512-140
33	B-2	86+90	8' / 8'	2 X 255 W	40'	8' RT FOP TO C ORTIZ AVENUE	715-512-140
34	B-2	88+70	8' / 8'	2 X 255 W	40'	1' RT FOP TO C ORTIZ AVENUE	715-512-140
35	B-2	90+50	8' / 8'	2 X 255 W	40'	1' RT FOP TO C ORTIZ AVENUE	715-512-140
36	B-2	92+10	8' / 8'	2 X 255 W	40'	2' RT FOP TO C ORTIZ AVENUE	715-512-140
37	B-2	93+90	12'	1 X 255 W	40'	30' LT FOP TO EOT	715-511-140
38	B-2	93+90	12'	1 X 255 W	40'	20' RT FOP TO EOT	715-511-140
39	B-2	95+60	12'	1 X 255 W	40'	32' LT FOP TO EOT	715-511-140
40	B-2	95+60	12'	1 X 255 W	40'	14' RT FOP TO EOA	715-511-140
41	B-2	97+20	12'	1 X 255 W	40'	32' LT FOP TO EOT	715-511-140
42	B-2	97+20	12'	1 X 255 W	40'	14' RT FOP TO EOA	715-511-140
43	B-2	98+90	12'	1 X 255 W	40'	14' RT FOP TO EOA	715-511-140
44	B-2	99+40	12'	1 X 255 W	40'	34' LT FOP TO EOT	715-511-140

COP = CENTER OF POLE
 EOA = EDGE OF AUXILIARY LANE
 EOT = EDGE OF TRAVEL LANE
 FOP = FACE OF POLE

REVISIONS				 201 N. Franklin Street, Suite 400 Tampa, Florida 33602 Florida Certificate of Authorization No. 02317 Engineer of Record: Burak Konuk, P.E. P.E. No.: 81581	LEE COUNTY DEPARTMENT OF TRANSPORTATION			SHEET NO. POLE DATA L-5
DATE	DESCRIPTION	DATE	DESCRIPTION		ROAD	COUNTY	CONTRACT NO.	
					CR 865 (ORTIZ AVE.)	LEE COUNTY	CN18-8479	

THE OFFICIAL RECORD OF THIS SHEET IS THE ELECTRONIC FILE DIGITALLY SIGNED AND SEALED UNDER RULE 61G15-23.004, F.A.C.



REVISIONS			
DATE	DESCRIPTION	DATE	DESCRIPTION

KCA
KISINGER CAMPO & ASSOCIATES

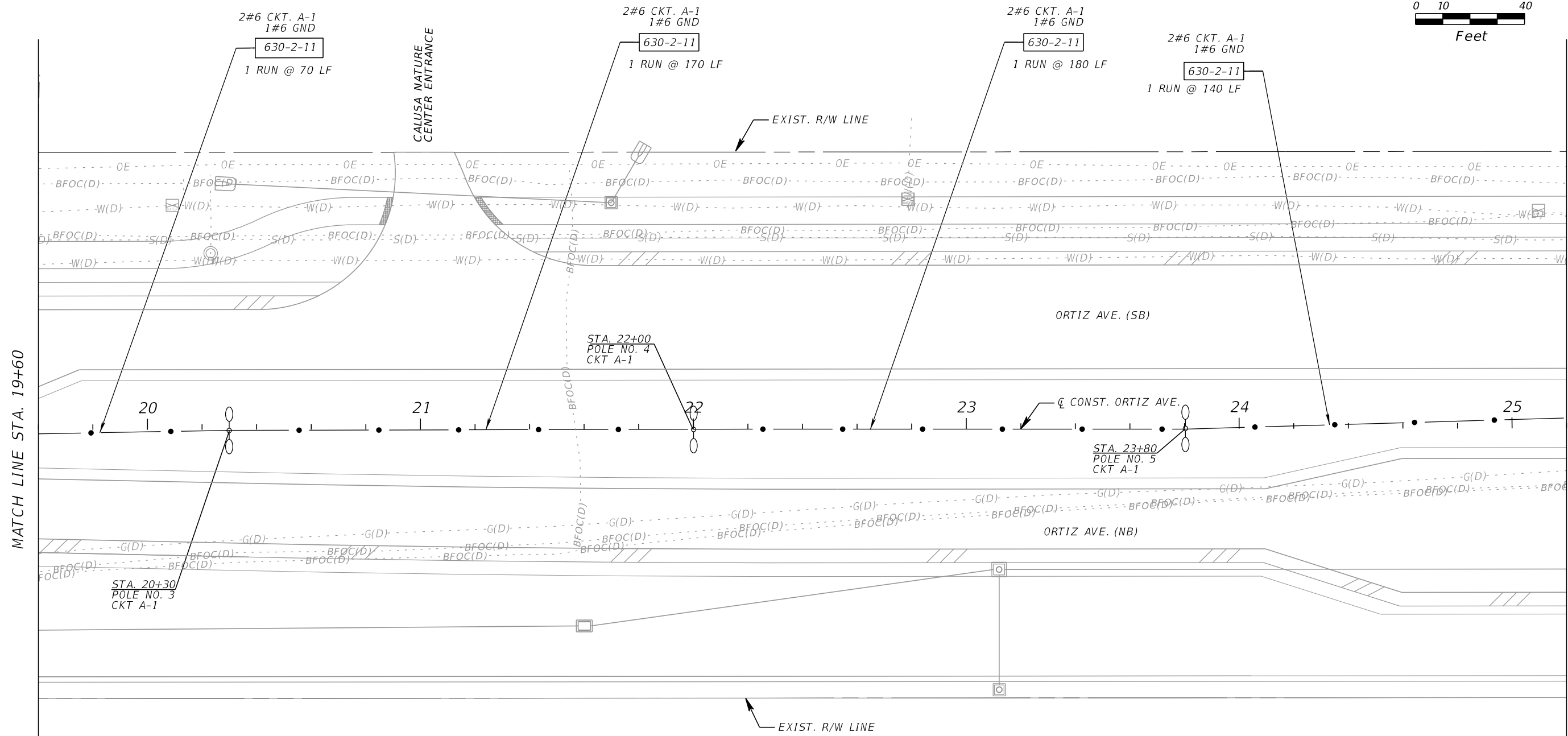
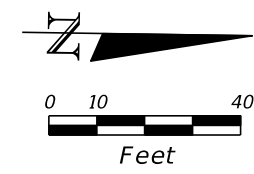
201 N. Franklin Street, Suite 400
Tampa, Florida 33602
Florida Certificate of Authorization No. 02317
Engineer of Record: Burak Konuk, P.E.
P.E. No.: 81581

LEE COUNTY DEPARTMENT OF TRANSPORTATION		
ROAD	COUNTY	CONTRACT NO.
CR 865 (ORTIZ AVE.)	LEE COUNTY	CN18-8479

LIGHTING PLAN (1)


SHEET NO.
L-6

THE OFFICIAL RECORD OF THIS SHEET IS THE ELECTRONIC FILE DIGITALLY SIGNED AND SEALED UNDER RULE 61G15-23.004, F.A.C.

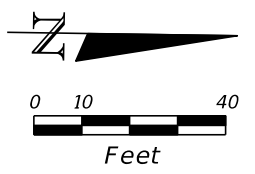


MATCH LINE STA. 19+60

MATCH LINE STA. 25+20

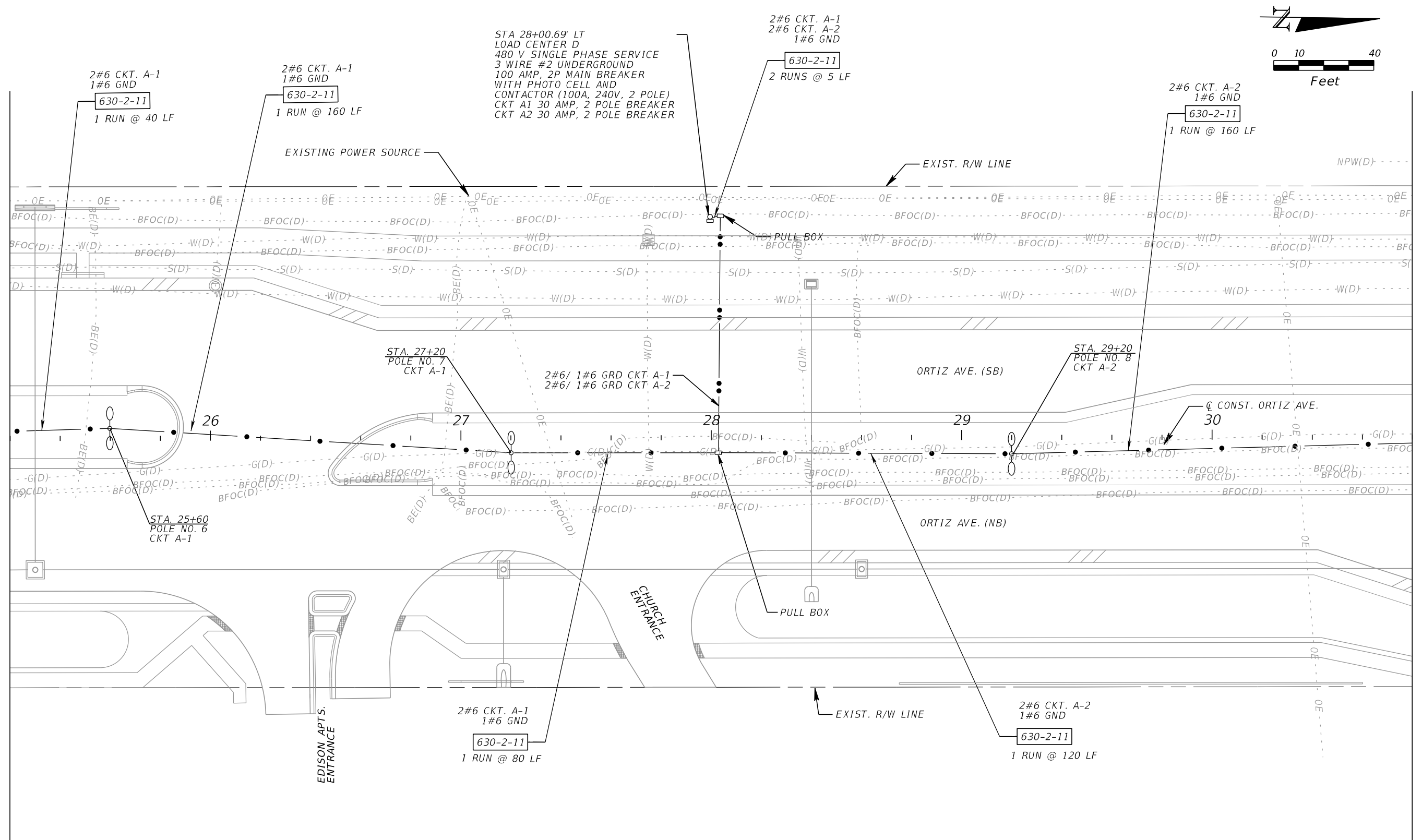
REVISIONS				 KISINGER CAMPO & ASSOCIATES 201 N. Franklin Street, Suite 400 Tampa, Florida 33602 Florida Certificate of Authorization No. 02317 Engineer of Record: Burak Konuk, P.E. P.E. No.: 81581	LEE COUNTY DEPARTMENT OF TRANSPORTATION			LIGHTING PLAN (2)	SHEET NO. L-7
DATE	DESCRIPTION	DATE	DESCRIPTION		ROAD	COUNTY	CONTRACT NO.		
					CR 865 (ORTIZ AVE.)	LEE COUNTY	CN18-8479		

THE OFFICIAL RECORD OF THIS SHEET IS THE ELECTRONIC FILE DIGITALLY SIGNED AND SEALED UNDER RULE 61G15-23.004, F.A.C.



MATCH LINE STA. 25+20

MATCH LINE STA. 30+80



STA 28+00.69 LT.
LOAD CENTER D
480 V SINGLE PHASE SERVICE
3 WIRE #2 UNDERGROUND
100 AMP, 2P MAIN BREAKER
WITH PHOTO CELL AND
CONTACTOR (100A, 240V, 2 POLE)
CKT A1 30 AMP, 2 POLE BREAKER
CKT A2 30 AMP, 2 POLE BREAKER

2#6 CKT. A-1
2#6 CKT. A-2
1#6 GND

2#6 CKT. A-1
1#6 GND

2#6 CKT. A-1
1#6 GND

2#6 CKT. A-2
1#6 GND

2#6 CKT. A-1
1#6 GND

2#6 CKT. A-2
1#6 GND

REVISIONS			
DATE	DESCRIPTION	DATE	DESCRIPTION

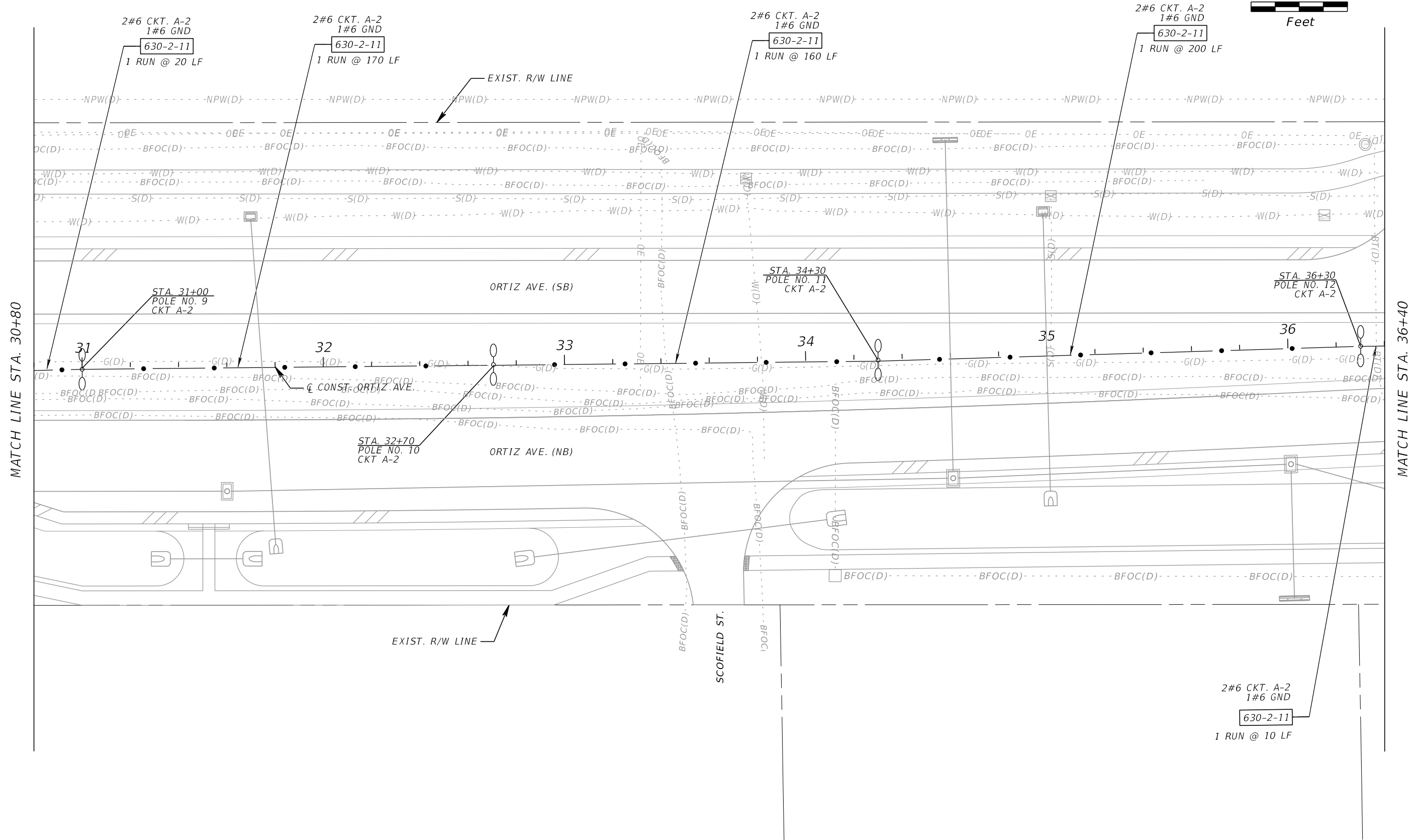
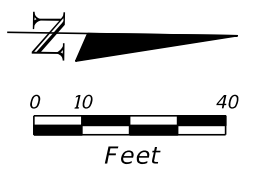
KCA
KISINGER CAMPO & ASSOCIATES
201 N. Franklin Street, Suite 400
Tampa, Florida 33602
Florida Certificate of Authorization No. 02317
Engineer of Record: Burak Konuk, P.E.
P.E. No.: 81581

LEE COUNTY DEPARTMENT OF TRANSPORTATION		
ROAD	COUNTY	CONTRACT NO.
CR 865 (ORTIZ AVE.)	LEE COUNTY	CN18-8479

LIGHTING PLAN (3)

SHEET NO.
L-8

THE OFFICIAL RECORD OF THIS SHEET IS THE ELECTRONIC FILE DIGITALLY SIGNED AND SEALED UNDER RULE 61G15-23.004, F.A.C.



MATCH LINE STA. 30+80

MATCH LINE STA. 36+40

REVISIONS			
DATE	DESCRIPTION	DATE	DESCRIPTION

KCA
KISINGER CAMPO & ASSOCIATES

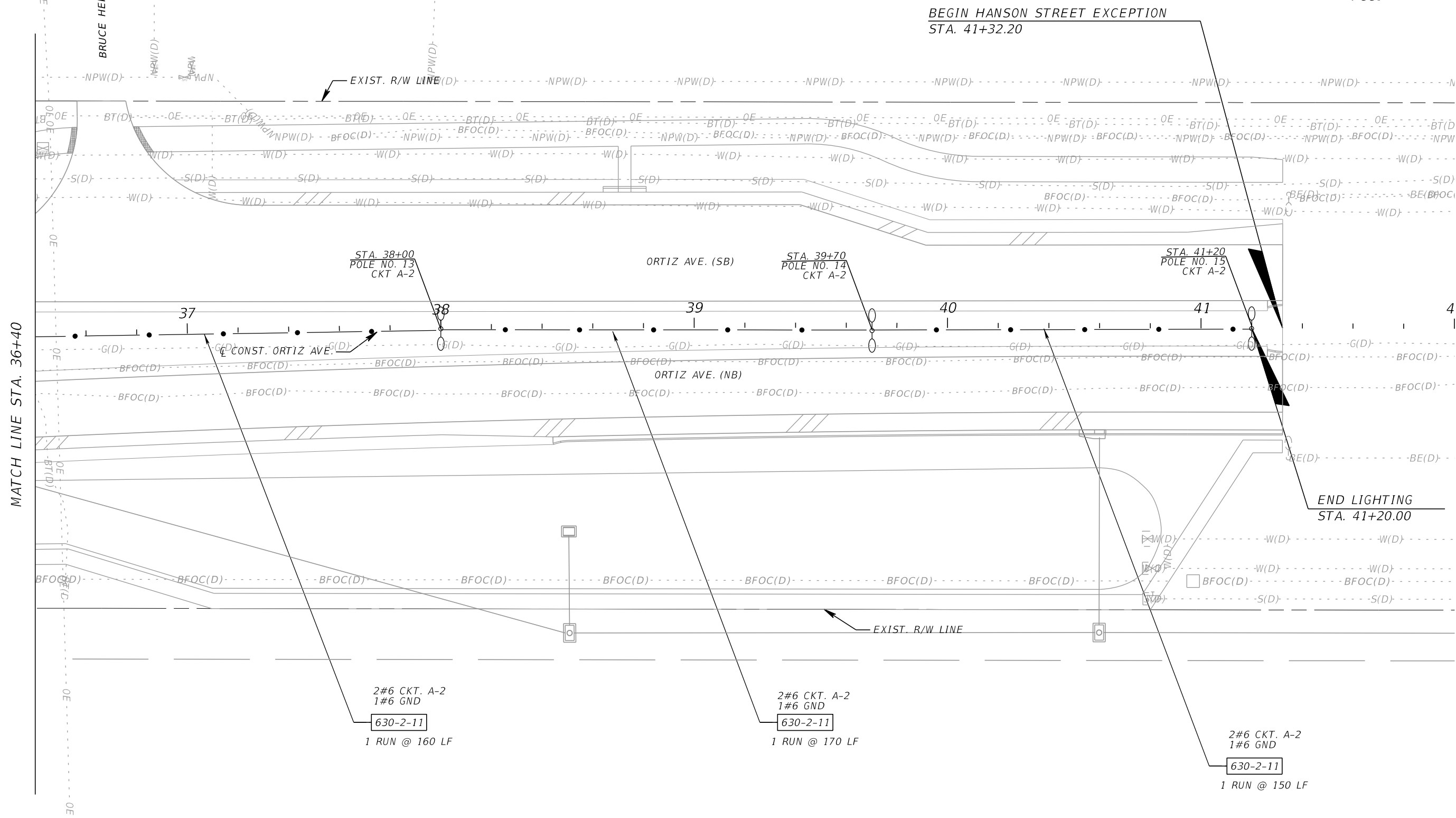
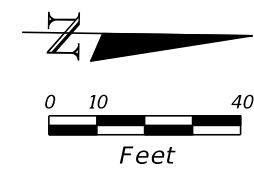
201 N. Franklin Street, Suite 400
Tampa, Florida 33602
Florida Certificate of Authorization No. 02317
Engineer of Record: Burak Konuk, P.E.
P.E. No.: 81581

LEE COUNTY DEPARTMENT OF TRANSPORTATION		
ROAD	COUNTY	CONTRACT NO.
CR 865 (ORTIZ AVE.)	LEE COUNTY	CN18-8479

LIGHTING PLAN (4)

SHEET NO.
L-9

THE OFFICIAL RECORD OF THIS SHEET IS THE ELECTRONIC FILE DIGITALLY SIGNED AND SEALED UNDER RULE 61G15-23.004, F.A.C.



MATCH LINE STA. 36+40

BEGIN HANSON STREET EXCEPTION
STA. 41+32.20

END LIGHTING
STA. 41+20.00

REVISIONS			
DATE	DESCRIPTION	DATE	DESCRIPTION

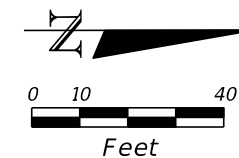
KCA
KISINGER CAMPO & ASSOCIATES
201 N. Franklin Street, Suite 400
Tampa, Florida 33602
Florida Certificate of Authorization No. 02317
Engineer of Record: Burak Konuk, P.E.
P.E. No.: 81581

LEE COUNTY DEPARTMENT OF TRANSPORTATION		
ROAD	COUNTY	CONTRACT NO.
CR 865 (ORTIZ AVE.)	LEE COUNTY	CN18-8479

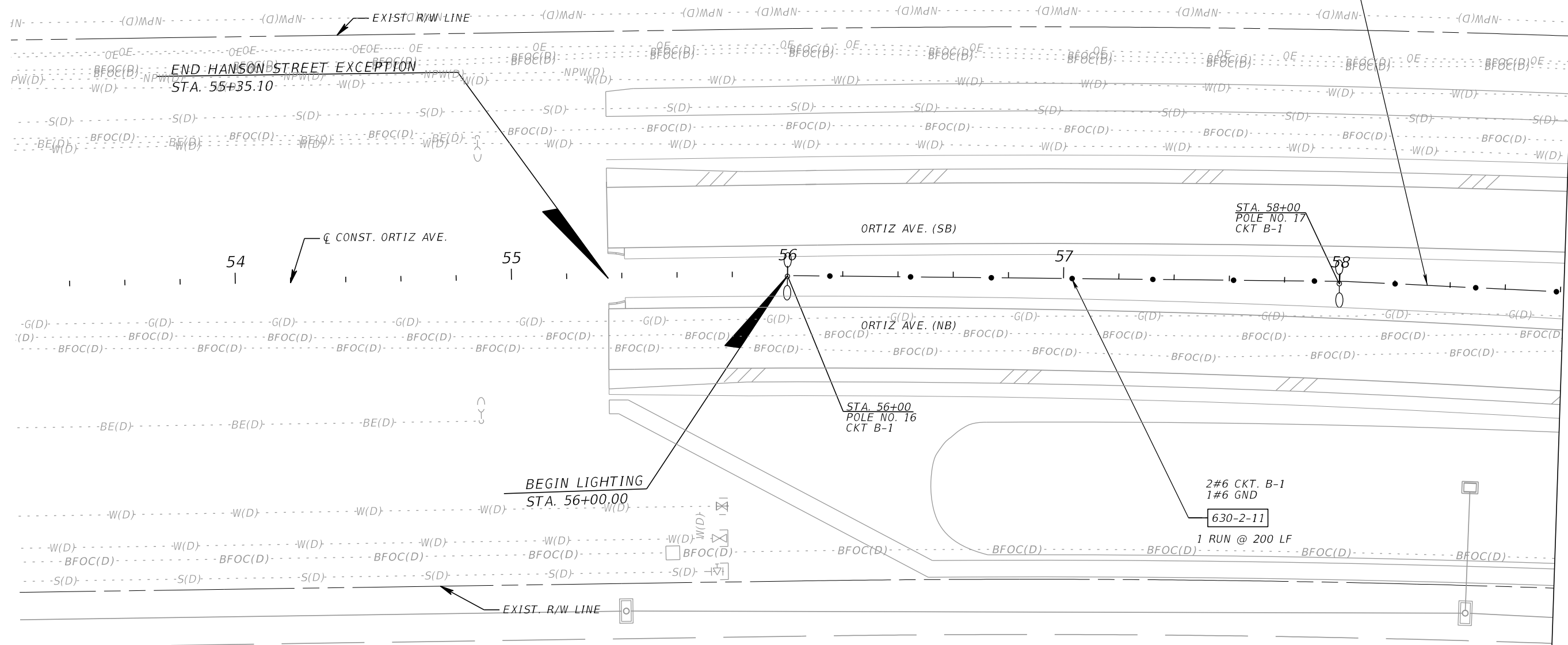
LIGHTING PLAN (5)

SHEET NO.
L-10


THE OFFICIAL RECORD OF THIS SHEET IS THE ELECTRONIC FILE DIGITALLY SIGNED AND SEALED UNDER RULE 61G15-23.004, F.A.C.



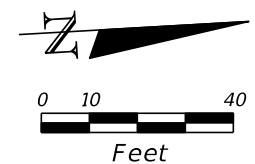
2#6 CKT. B-1
1#6 GND
630-2-11
1 RUN @ 82 LF



MATCH LINE STA. 58+82

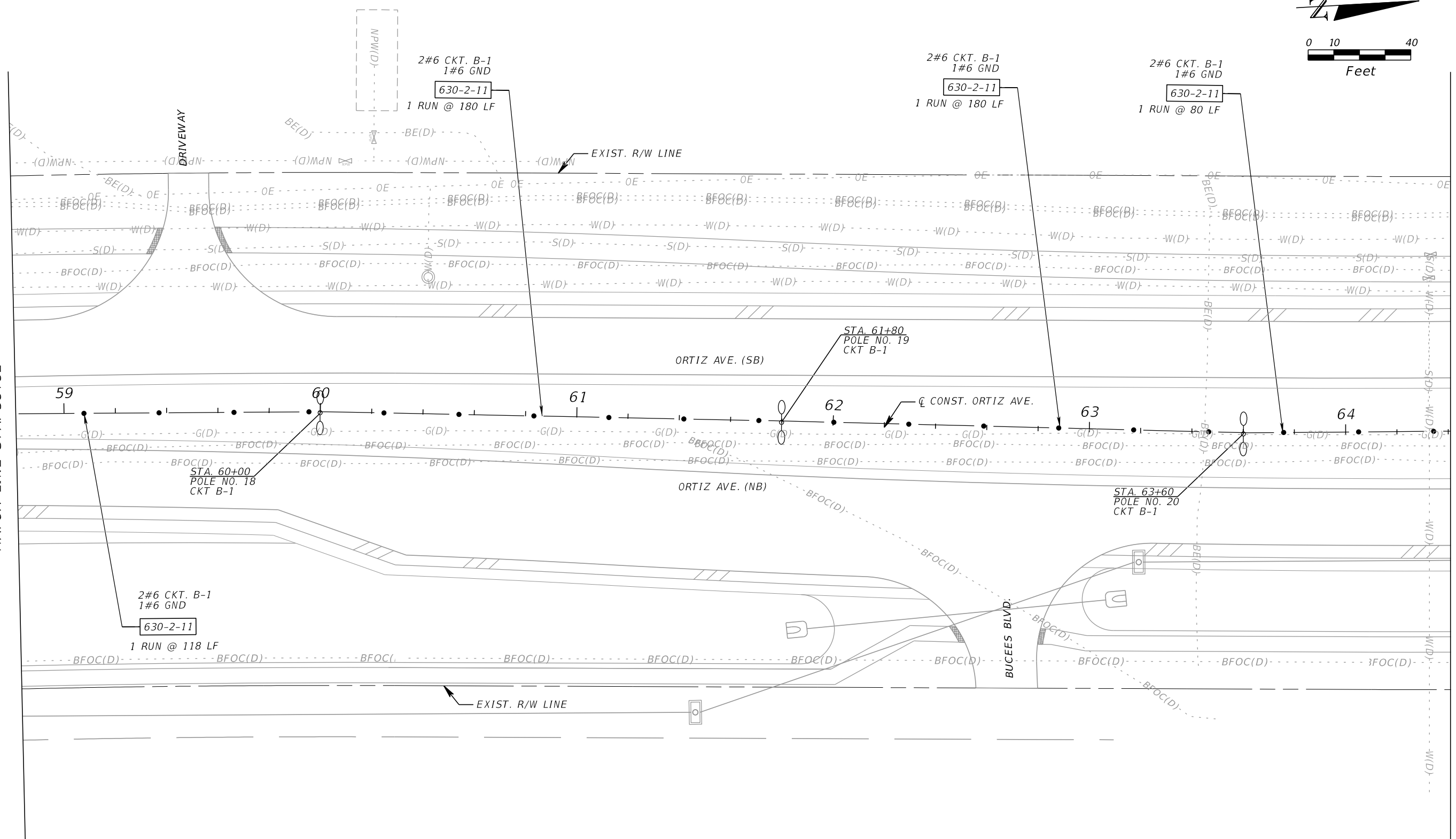
REVISIONS				 KISINGER CAMPO & ASSOCIATES 201 N. Franklin Street, Suite 400 Tampa, Florida 33602 Florida Certificate of Authorization No. 02317 Engineer of Record: Burak Konuk, P.E. P.E. No.: 81581	LEE COUNTY DEPARTMENT OF TRANSPORTATION			LIGHTING PLAN (6)	SHEET NO. L-11
DATE	DESCRIPTION	DATE	DESCRIPTION		ROAD	COUNTY	CONTRACT NO.		
						CR 865 (ORTIZ AVE.)	LEE COUNTY		CN18-8479

THE OFFICIAL RECORD OF THIS SHEET IS THE ELECTRONIC FILE DIGITALLY SIGNED AND SEALED UNDER RULE 61G15-23.004, F.A.C.



MATCH LINE STA. 58+82

MATCH LINE STA. 64+40



REVISIONS			
DATE	DESCRIPTION	DATE	DESCRIPTION

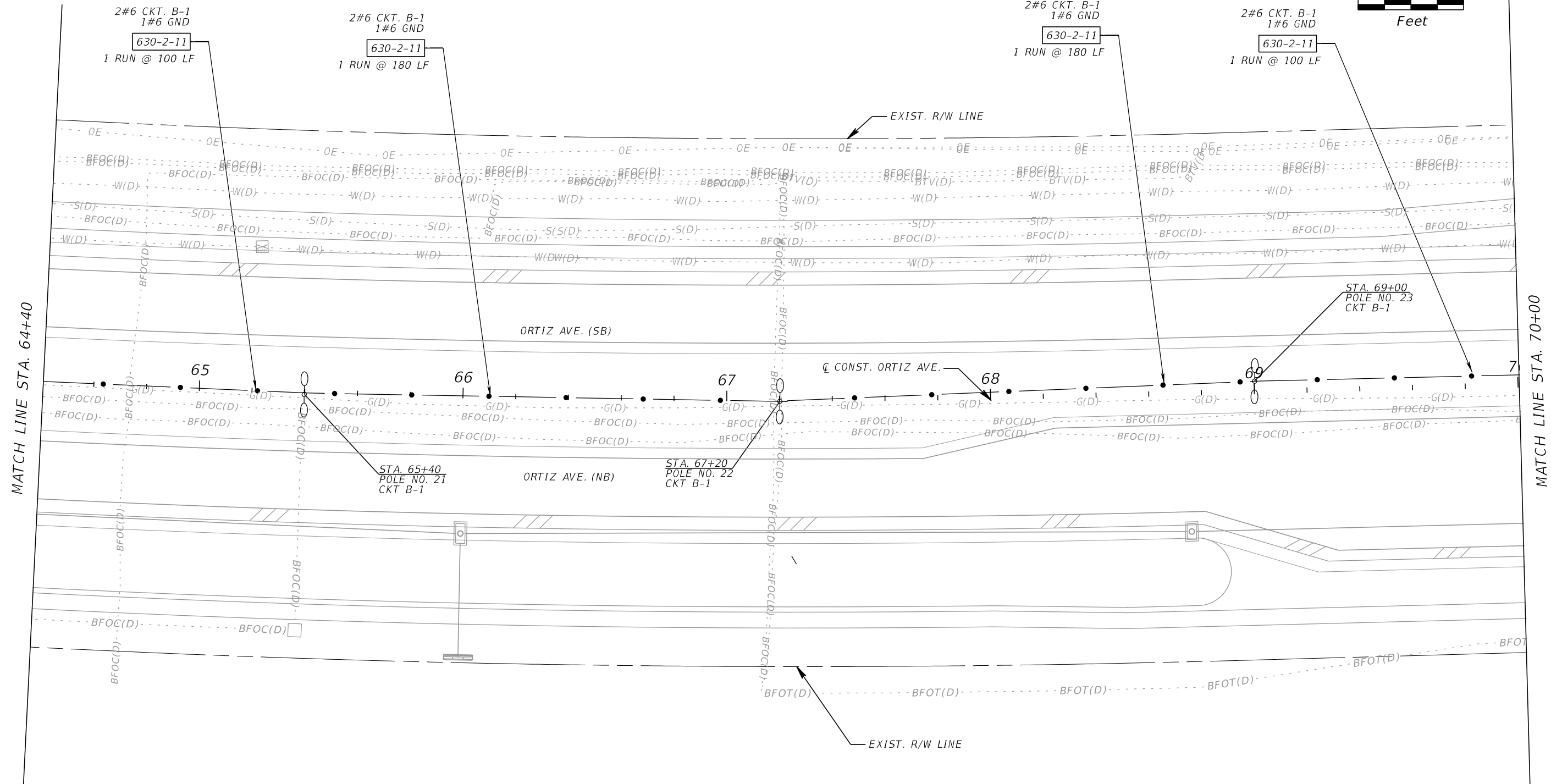
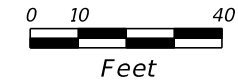
KCA
KISINGER CAMPO & ASSOCIATES
201 N. Franklin Street, Suite 400
Tampa, Florida 33602
Florida Certificate of Authorization No. 02317
Engineer of Record: Burak Konuk, P.E.
P.E. No.: 81581

LEE COUNTY DEPARTMENT OF TRANSPORTATION		
ROAD	COUNTY	CONTRACT NO.
CR 865 (ORTIZ AVE.)	LEE COUNTY	CN18-8479

LIGHTING PLAN (7)


SHEET NO.
L-12

THE OFFICIAL RECORD OF THIS SHEET IS THE ELECTRONIC FILE DIGITALLY SIGNED AND SEALED UNDER RULE 61G15-23.004, F.A.C.

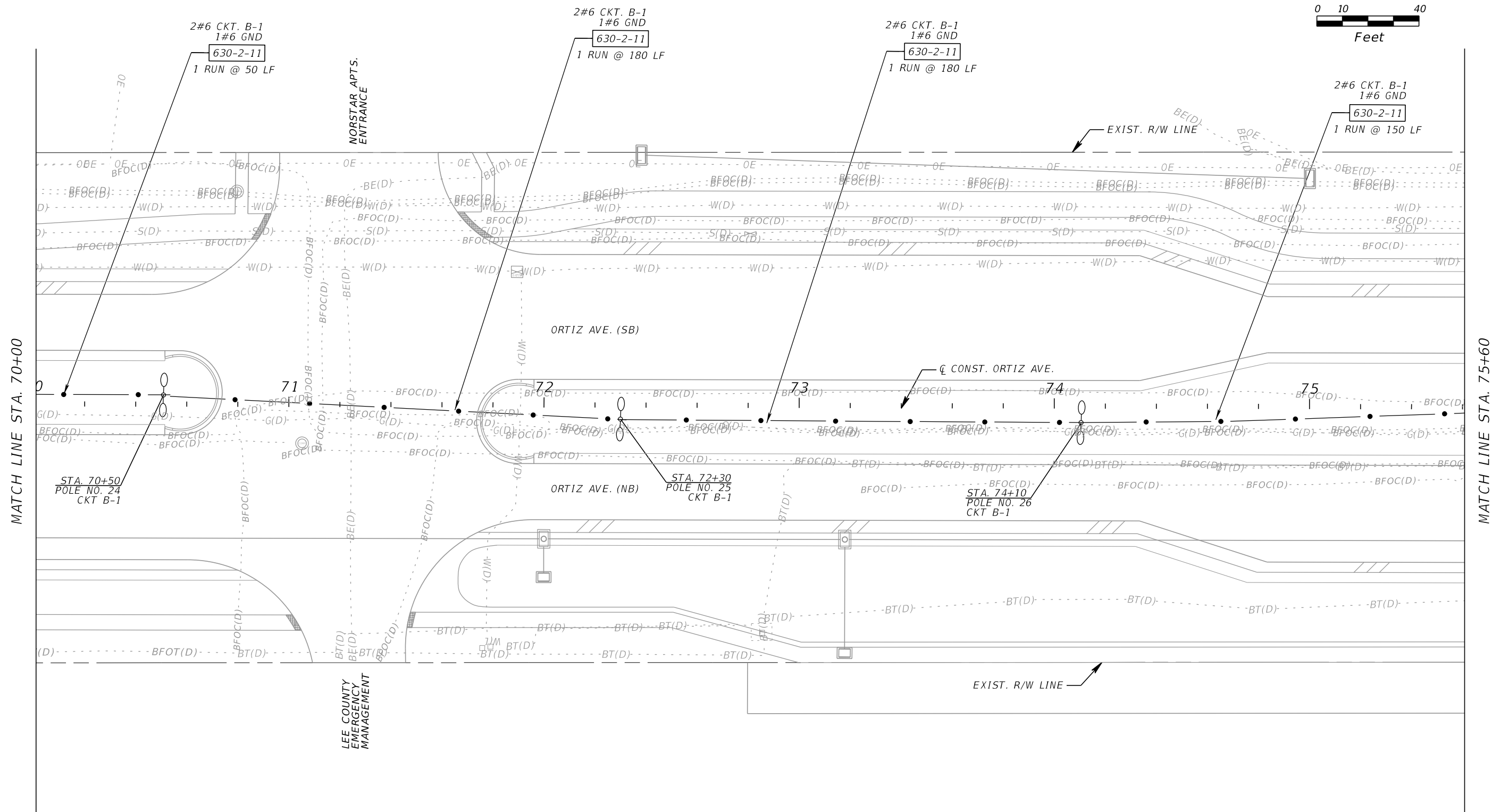
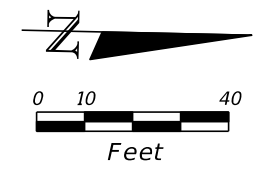


MATCH LINE STA. 64+40

MATCH LINE STA. 70+00

REVISIONS				 201 N. Franklin Street, Suite 400 Tampa, Florida 33602 Florida Certificate of Authorization No. 02317 Engineer of Record: Burak Konuk, P.E. P.E. No.: 81581	LEE COUNTY DEPARTMENT OF TRANSPORTATION			LIGHTING PLAN (8)	SHEET NO. L-13
DATE	DESCRIPTION	DATE	DESCRIPTION		ROAD	COUNTY	CONTRACT NO.		
					CR 865 (ORTIZ AVE.)	LEE COUNTY	CN18-8479		

THE OFFICIAL RECORD OF THIS SHEET IS THE ELECTRONIC FILE DIGITALLY SIGNED AND SEALED UNDER RULE 61G15-23.004, F.A.C.



MATCH LINE STA. 70+00

MATCH LINE STA. 75+60

REVISIONS			
DATE	DESCRIPTION	DATE	DESCRIPTION

KCA
KISINGER CAMPO & ASSOCIATES

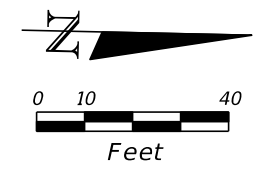
201 N. Franklin Street, Suite 400
Tampa, Florida 33602
Florida Certificate of Authorization No. 02317
Engineer of Record: Burak Konuk, P.E.
P.E. No.: 81581

LEE COUNTY DEPARTMENT OF TRANSPORTATION		
ROAD	COUNTY	CONTRACT NO.
CR 865 (ORTIZ AVE.)	LEE COUNTY	CN18-8479

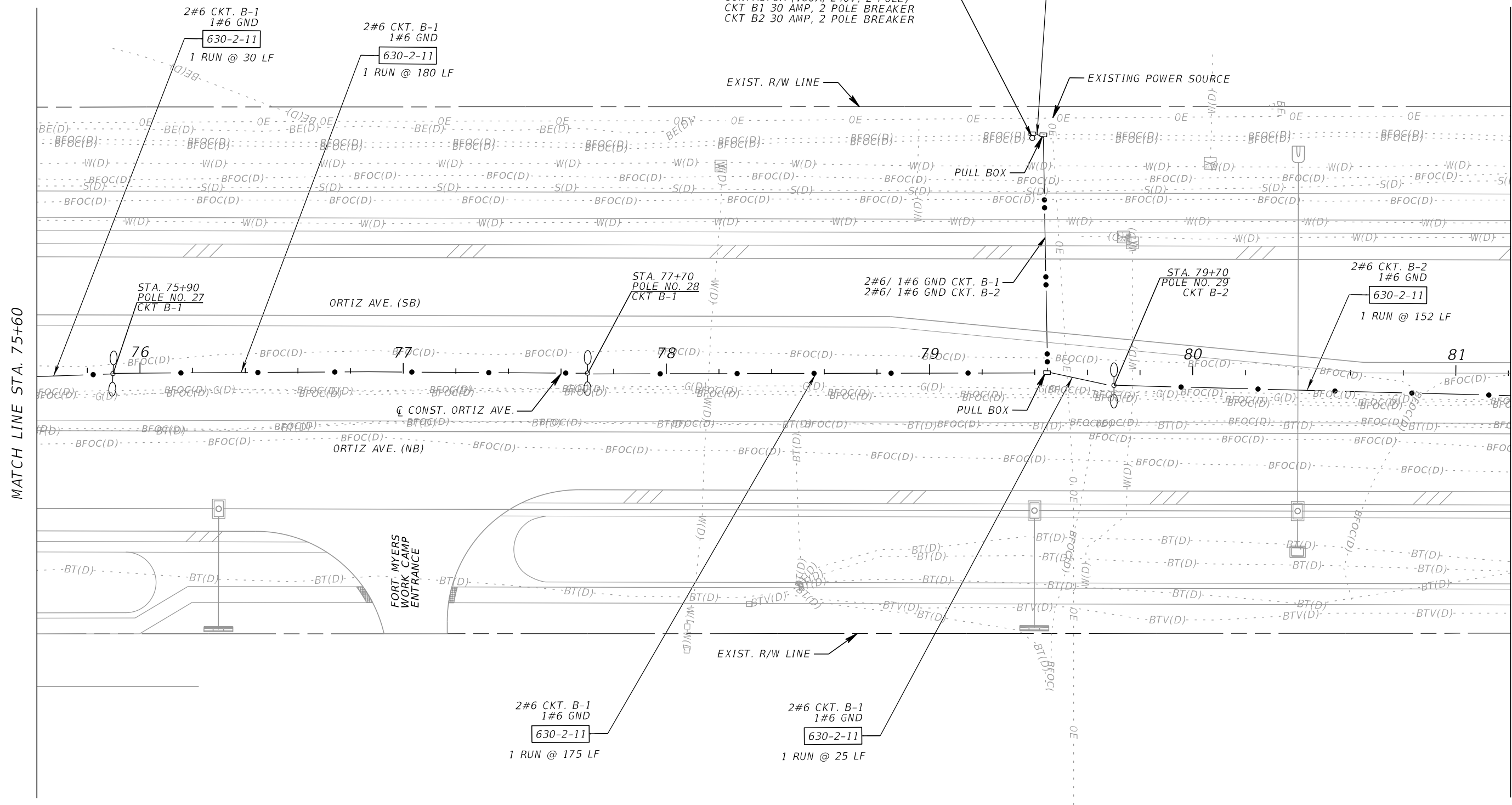
LIGHTING PLAN (9)

SHEET NO.
L-14

THE OFFICIAL RECORD OF THIS SHEET IS THE ELECTRONIC FILE DIGITALLY SIGNED AND SEALED UNDER RULE 61G15-23.004, F.A.C.



STA 79+39.00' LT
LOAD CENTER B
480 V SINGLE PHASE SERVICE
3 WIRE #2 UNDERGROUND
100 AMP, 2P MAIN BREAKER
WITH PHOTO CELL AND
CONTACTOR (100A, 240V, 2 POLE)
CKT B1 30 AMP, 2 POLE BREAKER
CKT B2 30 AMP, 2 POLE BREAKER



MATCH LINE STA. 75+60

MATCH LINE STA. 81+22

REVISIONS			
DATE	DESCRIPTION	DATE	DESCRIPTION

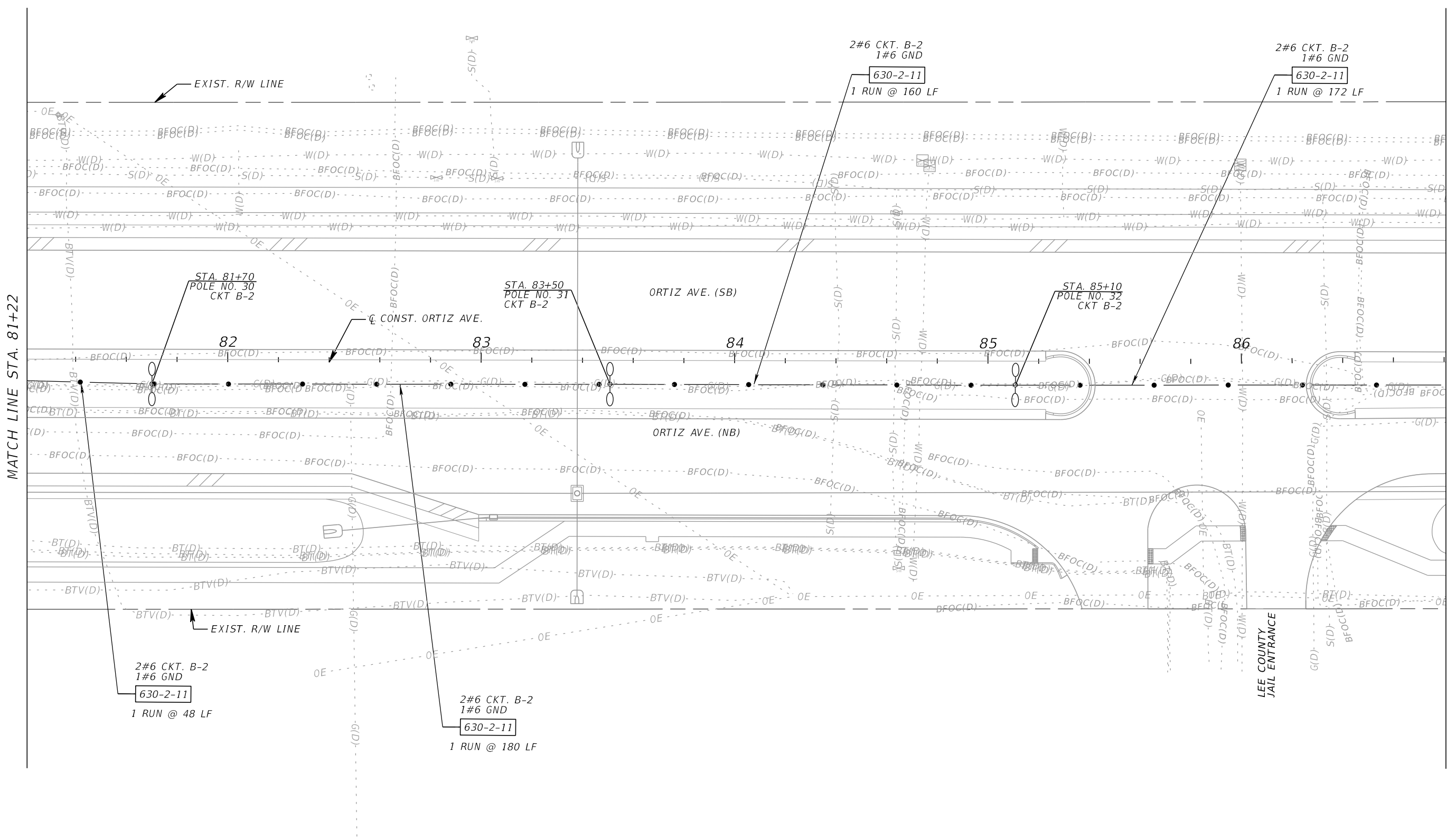
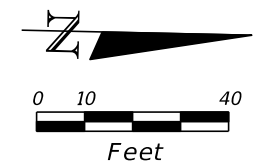
KCA
KISINGER CAMPO & ASSOCIATES
201 N. Franklin Street, Suite 400
Tampa, Florida 33602
Florida Certificate of Authorization No. 02317
Engineer of Record: Burak Konuk, P.E.
P.E. No.: 81581

LEE COUNTY DEPARTMENT OF TRANSPORTATION		
ROAD	COUNTY	CONTRACT NO.
CR 865 (ORTIZ AVE.)	LEE COUNTY	CN18-8479

LIGHTING PLAN (10)

SHEET NO.
L-15

THE OFFICIAL RECORD OF THIS SHEET IS THE ELECTRONIC FILE DIGITALLY SIGNED AND SEALED UNDER RULE 61G15-23.004, F.A.C.



MATCH LINE STA. 81+22

MATCH LINE STA. 86+82

REVISIONS			
DATE	DESCRIPTION	DATE	DESCRIPTION

KCA
KISINGER CAMPO & ASSOCIATES

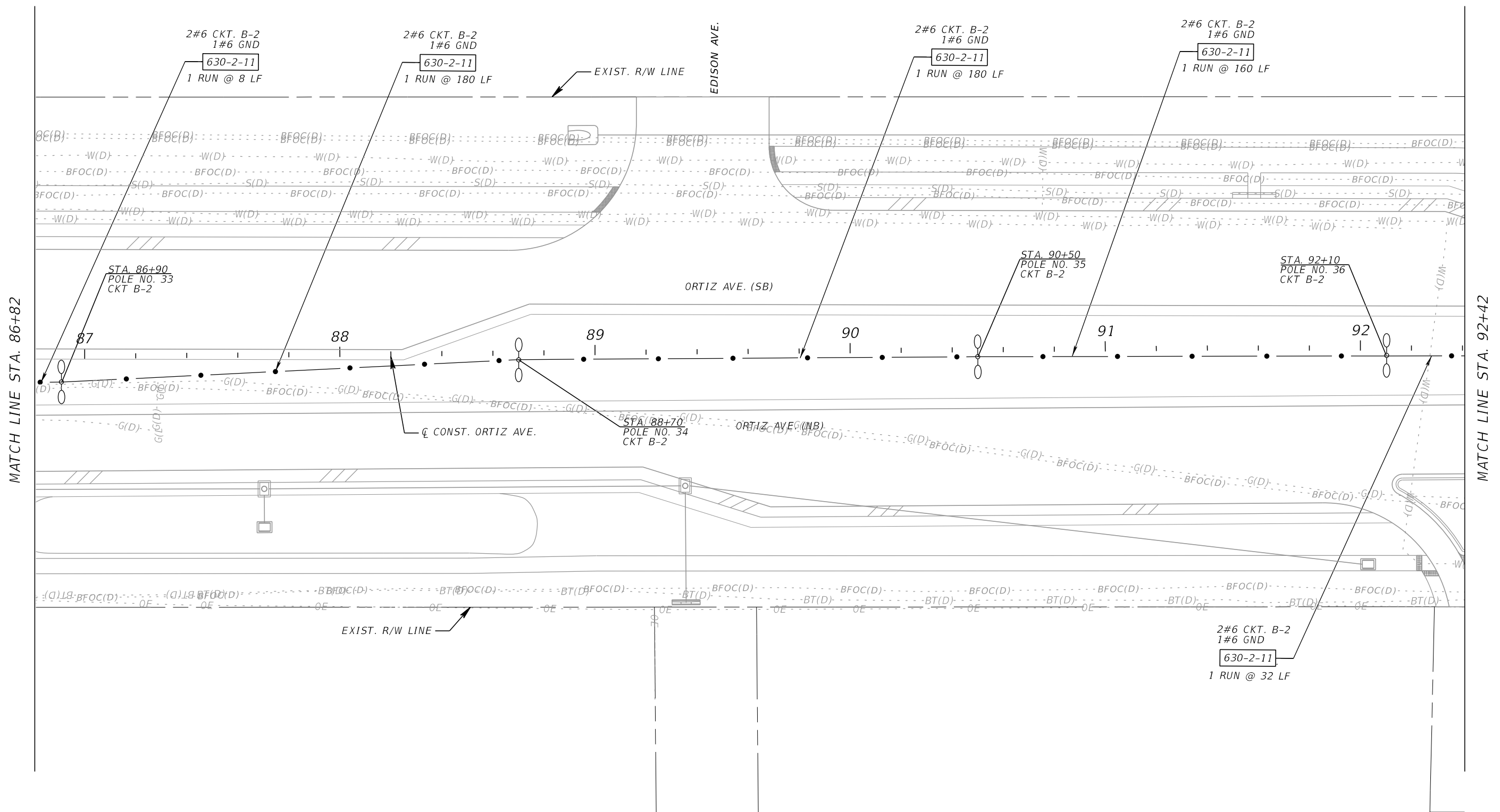
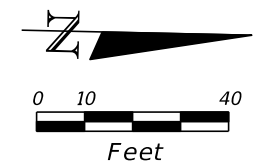
201 N. Franklin Street, Suite 400
Tampa, Florida 33602
Florida Certificate of Authorization No. 02317
Engineer of Record: Burak Konuk, P.E.
P.E. No.: 81581

LEE COUNTY DEPARTMENT OF TRANSPORTATION		
ROAD	COUNTY	CONTRACT NO.
CR 865 (ORTIZ AVE.)	LEE COUNTY	CN18-8479

LIGHTING PLAN (11)

SHEET NO.
L-16

THE OFFICIAL RECORD OF THIS SHEET IS THE ELECTRONIC FILE DIGITALLY SIGNED AND SEALED UNDER RULE 61G15-23.004, F.A.C.

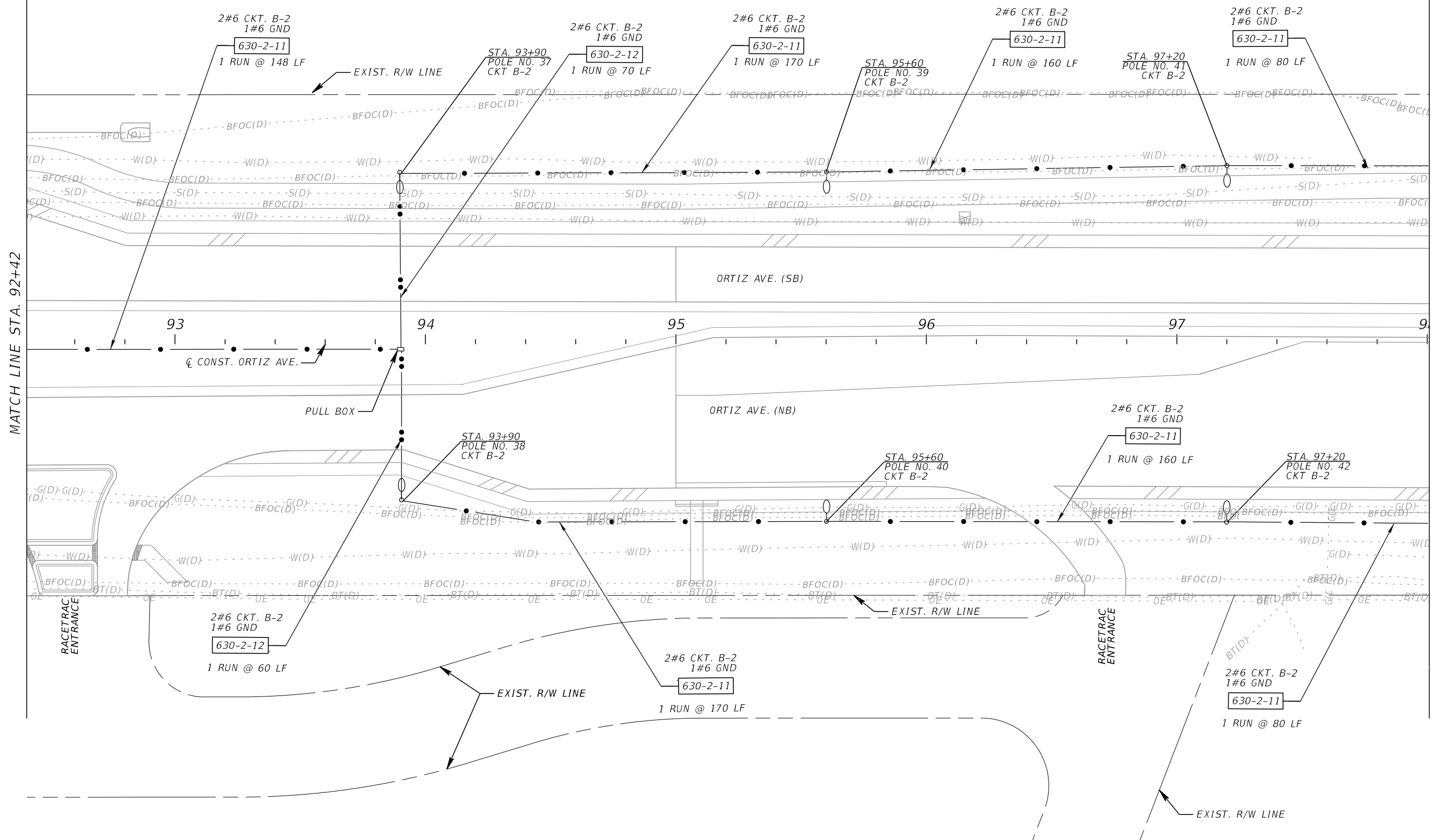
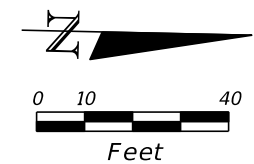


MATCH LINE STA. 86+82

MATCH LINE STA. 92+42

REVISIONS				 201 N. Franklin Street, Suite 400 Tampa, Florida 33602 Florida Certificate of Authorization No. 02317 Engineer of Record: Burak Konuk, P.E. P.E. No.: 81581	LEE COUNTY DEPARTMENT OF TRANSPORTATION			LIGHTING PLAN (12)	SHEET NO. L-17
DATE	DESCRIPTION	DATE	DESCRIPTION		ROAD	COUNTY	CONTRACT NO.		
					CR 865 (ORTIZ AVE.)	LEE COUNTY	CN18-8479		

THE OFFICIAL RECORD OF THIS SHEET IS THE ELECTRONIC FILE DIGITALLY SIGNED AND SEALED UNDER RULE 61G15-23.004, F.A.C.



MATCH LINE STA. 92+42

MATCH LINE STA. 98+02

REVISIONS			
DATE	DESCRIPTION	DATE	DESCRIPTION

KCA
KISINGER CAMPO & ASSOCIATES

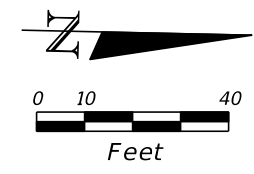
201 N. Franklin Street, Suite 400
Tampa, Florida 33602
Florida Certificate of Authorization No. 02317
Engineer of Record: Burak Konuk, P.E.
P.E. No.: 81581

LEE COUNTY DEPARTMENT OF TRANSPORTATION		
ROAD	COUNTY	CONTRACT NO.
CR 865 (ORTIZ AVE.)	LEE COUNTY	CN18-8479

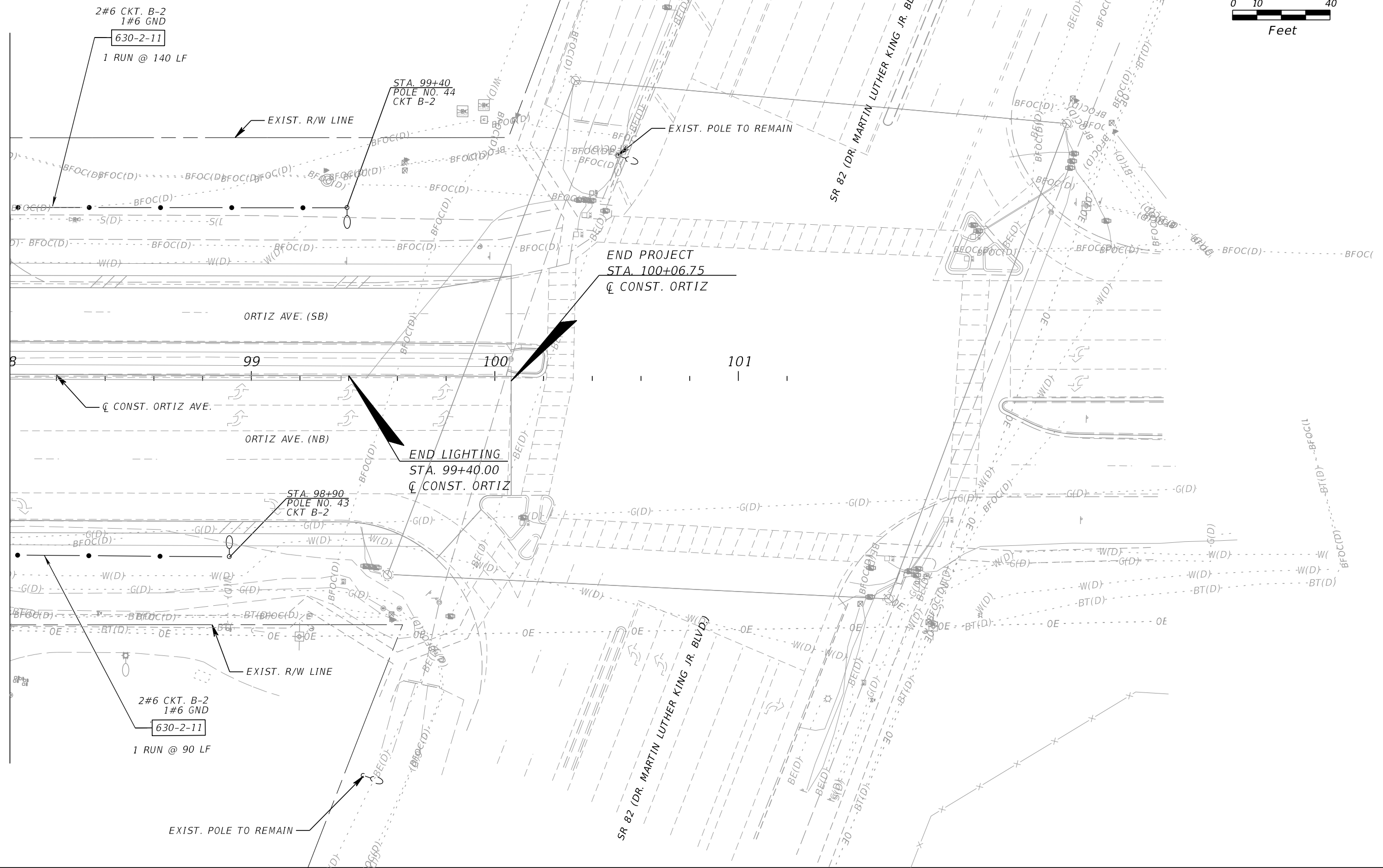
LIGHTING PLAN (13)

SHEET NO.
L-18

THE OFFICIAL RECORD OF THIS SHEET IS THE ELECTRONIC FILE DIGITALLY SIGNED AND SEALED UNDER RULE 61G15-23.004, F.A.C.



MATCH LINE STA. 98+02



REVISIONS			
DATE	DESCRIPTION	DATE	DESCRIPTION

KCA
KISINGER CAMPO & ASSOCIATES

201 N. Franklin Street, Suite 400
Tampa, Florida 33602
Florida Certificate of Authorization No. 02317
Engineer of Record: Burak Konuk, P.E.
P.E. No.: 81581

LEE COUNTY DEPARTMENT OF TRANSPORTATION		
ROAD	COUNTY	CONTRACT NO.
CR 865 (ORTIZ AVE.)	LEE COUNTY	CN18-8479

LIGHTING PLAN (14)

SHEET NO.
L-19

THE OFFICIAL RECORD OF THIS SHEET IS THE ELECTRONIC FILE DIGITALLY SIGNED AND SEALED UNDER RULE 61G15-23.004, F.A.C.