

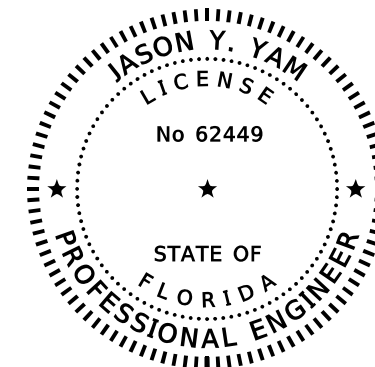
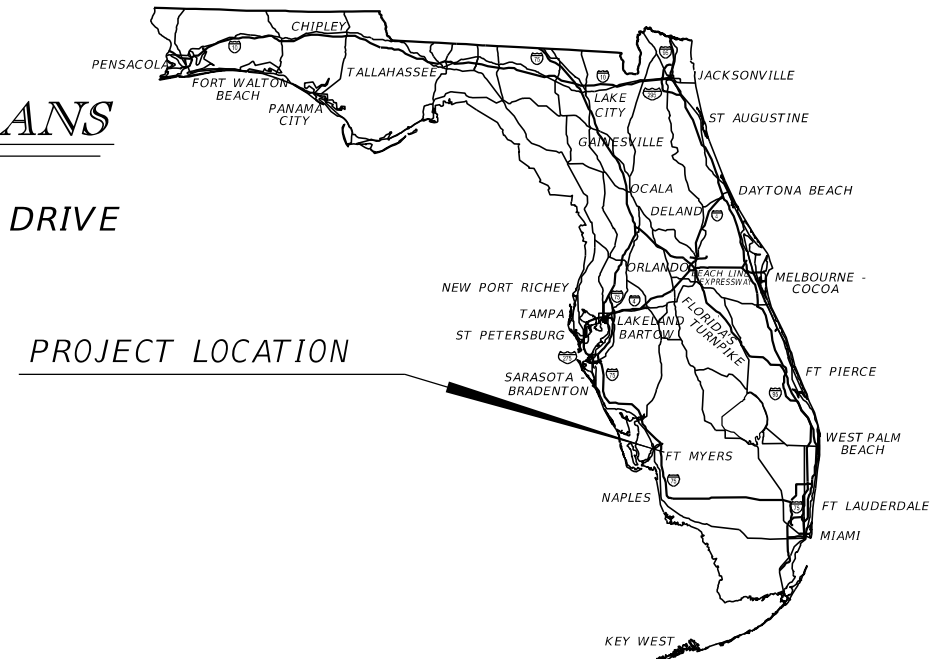
LEE COUNTY
DEPARTMENT OF TRANSPORTATION

SIGNING AND PAVEMENT MARKING PLANS

*GATEWAY BOULEVARD AT GRIFFIN DRIVE/FAIRWAY LAKES DRIVE
INTERSECTION CONTROL (ROUNDBOUT)*

INDEX OF SIGNING AND PAVEMENT MARKING PLANS

| <i>SHEET NO.</i> | <i>SHEET DESCRIPTION</i> |
|----------------------|--------------------------------------|
| <i>S-1</i> | <i>KEY SHEET</i> |
| <i>S-2</i> | <i>TABULATION OF QUANTITIES</i> |
| <i>S-3</i> | <i>PROJECT NOTES AND DETAILS</i> |
| <i>S-4</i> | <i>RRFB NOTES AND DETAILS</i> |
| <i>S-5 THRU S-11</i> | <i>SIGNING AND PAVEMENT MARKINGS</i> |
| <i>S-12</i> | <i>GUIDE SIGN WORKSHEET</i> |



*THIS ITEM HAS BEEN DIGITALLY
SIGNED AND SEALED BY*

*ON THE DATE ADJACENT TO THE SEAL
PRINTED COPIES OF THIS DOCUMENT ARE
NOT CONSIDERED SIGNED AND SEALED
AND THE SIGNATURE MUST BE VERIFIED
ON ANY ELECTRONIC COPIES.*

*SIGNING AND PAVEMENT MARKING
PLANS ENGINEER OF RECORD:*

*JASON Y. YAM, P.E.
P.E. NO.: 62449
CARDNO, INC.
380 PARK PLACE BOULEVARD, SUITE 300
CLEARWATER, FL 33759
(727) 531-3505*


*COUNTY PROJECT MANAGER:
David M. Murphy, P.E.*

| <i>CIP NO.</i> | <i>FISCAL YEAR</i> | <i>SHEET NO.</i> |
|----------------|------------------------|----------------------|
| <i>200671</i> | <i>22</i> | <i>S-1</i> |

TABULATION OF QUANTITIES

| PAY ITEM NO. | DESCRIPTION | UNIT | SHEET NUMBERS | | | | | | | | | | | | TOTAL THIS SHEET | | GRAND TOTAL | | | |
|--------------|---|------|---------------|-------|-------|-------|------|-------|-------|-------|-------|-------|-------|-------|------------------|--|-------------|-------|-------|-------|
| | | | S-5 | | S-6 | | S-7 | | S-8 | | S-9 | | S-10 | | S-11 | | PLAN | FINAL | PLAN | FINAL |
| | | | PLAN | FINAL | PLAN | FINAL | PLAN | FINAL | PLAN | FINAL | PLAN | FINAL | PLAN | FINAL | | | | | | |
| 630-2-11 | CONDUIT, FURNISH & INSTALL, OPEN TRENCH | LF | | | | | 125 | | | | | | | | | | 125 | | 125 | |
| 630-2-12 | CONDUIT, FURNISH & INSTALL, DIRECTIONAL BORE | LF | | | | | 920 | | | | | | | | | | 920 | | 920 | |
| 635-2-11 | PULL & SPLICE BOX, F&I - LCDOT PULL BOX, 17" X 30" COVER SIZE | EA | | | | | 17 | | | | | | | | | | 17 | | 17 | |
| 639-1-122 | ELECTRICAL POWER SERVICE, F&I, UNDERGROUND, METER PURCHASED BY CONTRACTOR | AS | | | | | 1 | | | | | | | | | | 1 | | 1 | |
| 641-2-12 | PRESTRESSED CONCRETE POLE, F&I, TYPE P-II SERVICE POLE (12') | EA | | | | | 1 | | | | | | | | | | 1 | | 1 | |
| 654-2-11 | RECTANGULAR RAPID FLASHING BEACON, F&I-AC POWERED, COMPLETE SIGN ASSEMBLY- SINGLE DIRECTION | AS | | | | | 14 | | | | | | | | | | 14 | | 14 | |
| 654-2-12 | RECTANGULAR RAPID FLASHING BEACON, F&I-AC POWERED, COMPLETE SIGN ASSEMBLY- BACK TO BACK | AS | | | | | 1 | | | | | | | | | | 1 | | 1 | |
| 700-1-11 | SINGLE POST SIGN, F&I GROUND MOUNT, UP TO 12 SF | AS | 1 | | | | 14 | | 7 | | 1 | | 2 | | | | 25 | | 25 | |
| 700-1-60 | SINGLE POST SIGN, REMOVE | AS | 1 | | | | 1 | | | | | | | | | | 2 | | 2 | |
| 700-2-11 | MULTI-POST SIGN, F&I GROUND MOUNT, UP TO 12 SF | AS | | | | | 4 | | | | | | | | | | 4 | | 4 | |
| 710-11-290 | PAINTED PAVEMENT MARKINGS, STANDARD, YELLOW, ISLAND NOSE | SF | | | | | | | | | | | 53 | | | | 53 | | 53 | |
| 710-90 | PAINTED PAVEMENT MARKINGS, FINAL SURFACE | LS | | | | | | | | | | | | | | | 0 | | 0 | |
| * | RETRO-REFLECTIVE PAVEMENT MARKERS - BI-DIRECTIONAL WHITE/RED | EA | | | 38 | | | | 26 | | | 24 | | 23 | | | 111 | | 111 | |
| * | RETRO-REFLECTIVE PAVEMENT MARKERS - BI-DIRECTIONAL YELLOW/YELLOW | EA | | | | | | | | | 12 | | 6 | | | | 18 | | 18 | |
| * | STANDARD, WHITE, SOLID, 6" | GM | | | 0.284 | | | | 0.123 | | 0.047 | | 0.076 | | | | 0.530 | | 0.530 | |
| * | STANDARD, WHITE, SOLID, 8" | GM | | | 0.053 | | | | 0.033 | | 0.076 | | 0.089 | | | | 0.251 | | 0.251 | |
| * | STANDARD, WHITE, SOLID, 12" | LF | | | 340 | | | | | | | | | | | | 340 | | 340 | |
| * | STANDARD, WHITE, SOLID, 18" | LF | | | 75 | | | | | | | | 220 | | 280 | | 575 | | 575 | |
| * | STANDARD, WHITE, SOLID, 24" | LF | | | 340 | | | | | | | | | | | | 340 | | 340 | |
| * | STANDARD, YELLOW, SOLID, 6" | GM | | | 0.152 | | | | 0.067 | | 0.064 | | 0.095 | | | | 0.378 | | 0.378 | |
| * | STANDARD, YELLOW, SOLID, 18" | LF | | | | | | | | | | | 65 | | | | 65 | | 65 | |
| * | STANDARD, WHITE, 10-30 SKIP, 6" | GM | | | 0.062 | | | | | | | | | | | | 0.062 | | 0.062 | |
| * | STANDARD, WHITE, 2-2 DOTTED GUIDELINE, 12" FOR ROUNDABOUT | GM | | | 0.039 | | | | | | | | | | | | 0.039 | | 0.039 | |
| * | STANDARD, WHITE, 2-4 DOTTED GUIDELINE, 6" | GM | | | 0.013 | | | | | | | | | | | | 0.013 | | 0.013 | |
| * | STANDARD, YELLOW, 6-10 DOTTED EXTENSION LINE, 6" | GM | | | | | | | | | | | 0.047 | | | | 0.047 | | 0.047 | |
| * | STANDARD WHITE MESSAGE | | | | | | | | | | | | | | | | 0 | | 0 | |
| * | YIELD | EA | | | 6 | | | | | | | | | | | | 6 | | 6 | |
| * | STANDARD WHITE ARROW | | | | | | | | | | | | | | | | 0 | | 0 | |
| * | LEFT | EA | | | | | | | | | | | 1 | | | | 1 | | 1 | |
| * | THROUGH | EA | | | 2 | | | | | | | | | | | | 2 | | 2 | |
| * | THROUGH / RIGHT | EA | | | 1 | | | | 2 | | | | | | | | 3 | | 3 | |
| * | THROUGH / LEFT ROUNDABOUT | EA | | | 1 | | | | 2 | | | | | | | | 3 | | 3 | |
| * | THROUGH / LEFT | EA | | | 4 | | | | | | | | | | | | 4 | | 4 | |
| 711-11-124 | THERMOPLASTIC, STANDARD, WHITE, SOLID, 18" FOR DIAGONALS AND CHEVRONS | LF | | | 72 | | | | 10 | | | | 220 | | 280 | | 582 | | 582 | |
| 711-11-141 | THERMOPLASTIC, STANDARD, WHITE, 2-4 DOTTED GUIDELINE, 6" | GM | | | 0.013 | | | | | | | | | | | | 0.013 | | 0.013 | |
| 711-11-144 | THERMOPLASTIC, STANDARD, WHITE, 2-2 DOTTED GUIDELINE, 12" FOR ROUNDABOUT | GM | | | 0.039 | | | | | | | | | | | | 0.039 | | 0.039 | |
| 711-11-224 | THERMOPLASTIC, STANDARD, YELLOW, SOLID, 18" FOR DIAGONAL OR CHEVRON | LF | | | | | | | | | | 25 | | 65 | | | 90 | | 90 | |
| 711-11-241 | THERMOPLASTIC, STANDARD, YELLOW, 6-10 DOTTED EXTENSION LINE, 6" | GM | | | | | | | | | | | 0.047 | | | | 0.047 | | 0.047 | |
| 711-14-123 | THERMOPLASTIC, PREFORMED, WHITE, SOLID, 12" FOR CROSSWALK | LF | | | 340 | | | | | | | | | | | | 340 | | 340 | |
| 711-14-125 | THERMOPLASTIC, PREFORMED, WHITE, SOLID, 24" FOR CROSSWALK/STOPBAR | LF | | | 340 | | | | | | | | | | | | 340 | | 340 | |
| 711-14-160 | THERMOPLASTIC, PREFORMED, WHITE, MESSAGE | | | | | | | | | | | | | | | | 0 | | 0 | |
| | YIELD | EA | | | 6 | | | | | | | | | | | | 6 | | 6 | |
| 711-14-170 | THERMOPLASTIC, PREFORMED, WHITE, ARROW | | | | | | | | | | | | | | | | 0 | | 0 | |
| | LEFT | EA | | | | | | | | | | | 1 | | | | 1 | | 1 | |
| | THROUGH | EA | | | 2 | | | | | | | | | | | | 2 | | 2 | |
| | THROUGH / RIGHT | EA | | | 1 | | | | 2 | | | | | | | | 3 | | 3 | |
| | THROUGH / LEFT ROUNDABOUT | EA | | | 1 | | | | 2 | | | | | | | | 3 | | 3 | |
| | THROUGH / LEFT | EA | | | 4 | | | | | | | | | | | | 4 | | 4 | |
| 711-16-101 | THERMOPLASTIC, STANDARD, OTHER SURFACES, WHITE, SOLID, 6" | GM | | | 0.284 | | | | 0.123 | | 0.047 | | 0.076 | | | | 0.530 | | 0.530 | |
| 711-16-102 | THERMOPLASTIC, STANDARD, OTHER SURFACES, WHITE, SOLID, 8" | GM | | | 0.053 | | | | 0.023 | | | | 0.076 | | 0.089 | | 0.241 | | 0.241 | |
| 711-16-131 | THERMOPLASTIC, OTHER SURFACES, WHITE, SKIP, 6", 10-30 SKIP | GM | | | 0.062 | | | | | | | | | | | | 0.062 | | 0.062 | |
| 711-16-201 | THERMOPLASTIC, STANDARD, OTHER SURFACES, YELLOW, SOLID, 6" | GM | | | 0.152 | | | | 0.067 | | 0.064 | | 0.095 | | | | 0.378 | | 0.378 | |
| 715-1-12 | LIGHTING CONDUCTORS, F&I, INSULATED, NO. 8 - 6 | LF | | | | | | 2175 | | | | | | | | | 2175 | | 2175 | |

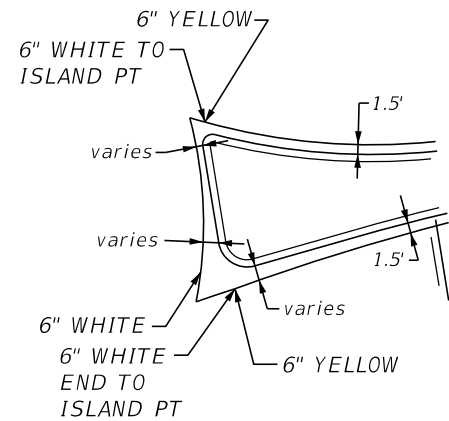
* THESE QUANTITIES ARE PAID FOR UNDER PAINTED PAVEMENT MARKINGS (FINAL SURFACE), LUMP SUM - ITEM NO. 710-90. THE QUANTITIES SHOWN ARE FOR ONE APPLICATION; SEE SPECIFICATION 710 FOR THE NUMBER OF APPLICATIONS REQUIRED.

| REVISIONS | | | | JASON Y. YAM, P.E. P.E. LICENSE NUMBER 62449 CARDNO, INC. 380 PARK PLACE BOULEVARD, SUITE 300 CLEARWATER, FLORIDA 33759 |  | GATEWAY BOULEVARD AT GRIFFIN DRIVE INTERSECTION CONTROL (ROUNDABOUT) | | COUNTY PROJECT NO. | SHT. NO. |
|-----------|-------------|------|-------------|---|---|--|--|--------------------|----------|
| DATE | DESCRIPTION | DATE | DESCRIPTION | | | TABULATION OF QUANTITIES | | 200671 | S-2 |

THE OFFICIAL RECORD OF THIS SHEET IS THE ELECTRONIC FILE DIGITALLY SIGNED AND SEALED UNDER RULE 61G15-23.004, F.A.C.

SIGNING AND PAVEMENT MARKING NOTES:


1. SIGNS SHALL BE PLACED BASED ON FDOT STANDARD PLANS INDEX NO. 700-101, UNLESS OTHERWISE NOTED ON PLANS. ALL SIGNS MOUNTED OVER SIDEWALKS SHALL HAVE A VERTICAL CLEARANCE OF EIGHT FEET (8') STANDARD.
2. UNLESS OTHERWISE NOTED ON PLAN SHEETS, ALL CROSSWALKS SHALL BE TEN FEET (10') IN WIDTH. MEASUREMENTS SHALL BE FROM INSIDE TO INSIDE OF 12" STRIPES.
3. ALL PAVEMENT MARKINGS AND CROSSING MARKINGS ARE TO CONFORM TO FDOT STANDARD PLANS INDEX NO. 711-001 AND 711-002 UNLESS OTHERWISE SHOWN ON PLANS.
4. REFER TO FDOT STANDARD PLANS INDEX NO. 706-001 FOR PLACEMENT, TYPE AND SPACING OF ALL REFLECTIVE PAVEMENT MARKERS (RPM'S) UNLESS OTHERWISE SHOWN ON PLANS.
5. FINAL ASPHALT COURSE SHALL HAVE TEMPORARY PAVEMENT MARKINGS FOR 14 DAYS PRIOR TO INSTALLATION OF FINAL (PERMANENT) THERMOPLASTIC MARKINGS.
6. ALL THE TEMPORARY PAVEMENT MARKINGS NOT FULLY COVERED BY THE PERMANENT PAVEMENT SHALL BE REMOVED PRIOR TO INSTALLING FINAL (PERMANENT) THERMOPLASTIC MARKINGS.
7. PAVEMENT MARKING AROUND THE NOSES OF ROUNDABOUT MEDIAN ISLANDS SHALL BE COMPLETED AS SHOWN IN THE MEDIAN ISLAND DETAIL BELOW, UNLESS OTHERWISE SHOWN ON THE PLANS.
8. PAY ITEM 700-1-11: ALL SIGN POSTS SHALL BE SELECTED USING THE PROCESS DESCRIBED IN FDOT STANDARD PLANS INDEX NO. 700-010. ALL SIGN REFLECTIVE SHEETING SHALL BE TYPE 11 DIAMOND GRADE.



MEDIAN ISLAND DETAIL (TYP.)

RRFB CONDUIT LEGEND

- HV = HIGH VOLTAGE CONDUIT
- LV = LOW VOLTAGE CONDUIT
- SP = EMPTY SPARE CONDUIT

| REVISIONS | | | | JASON Y. YAM, P.E. P.E. LICENSE NUMBER 62449 CARDNO, INC. 380 PARK PLACE BOULEVARD, SUITE 300 CLEARWATER, FLORIDA 33759 |  | GATEWAY BOULEVARD AT GRIFFIN DRIVE INTERSECTION CONTROL (ROUNDABOUT) | | COUNTY | SHT. NO. |
|-----------|-------------|------|-------------|---|---|---|--|--------|----------|
| DATE | DESCRIPTION | DATE | DESCRIPTION | | | PROJECT NO. | | | |
| | | | | | | PROJECT NOTES AND DETAILS | | 200671 | S-3 |

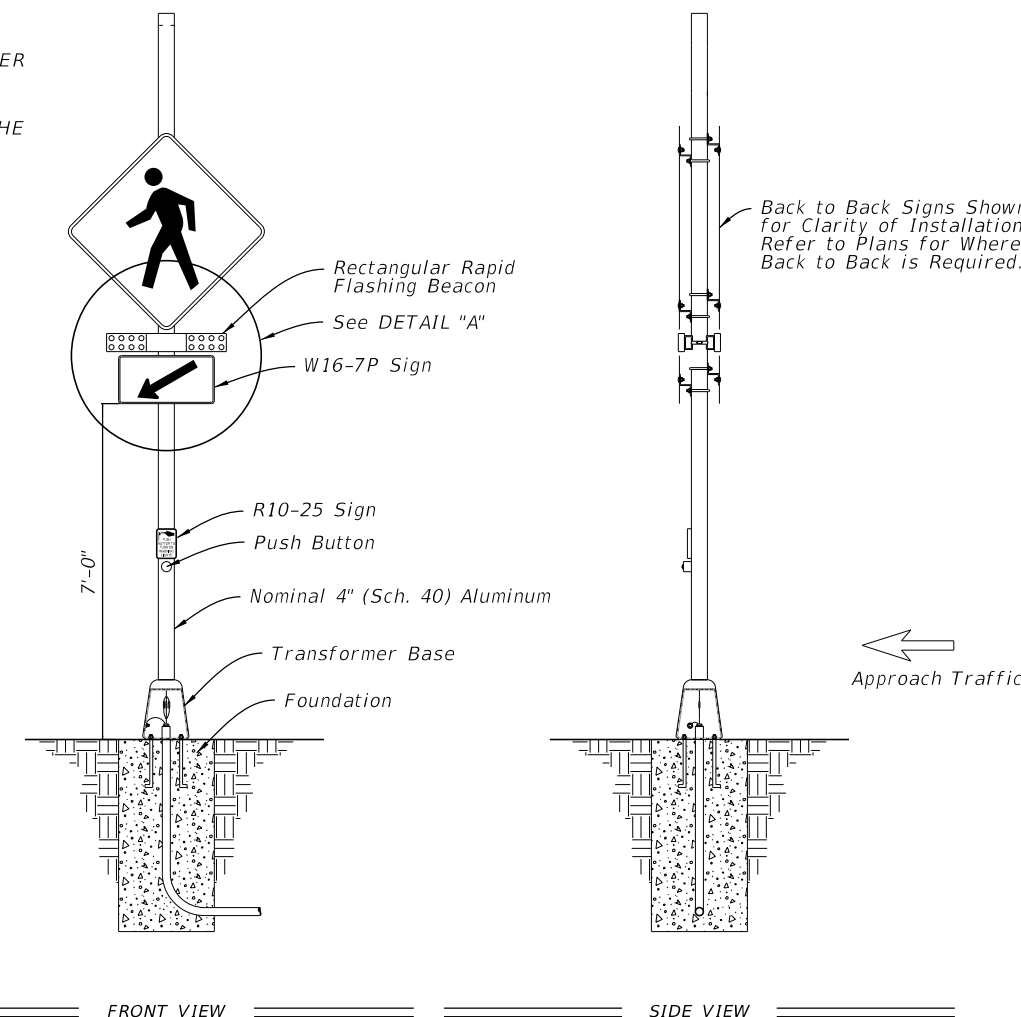
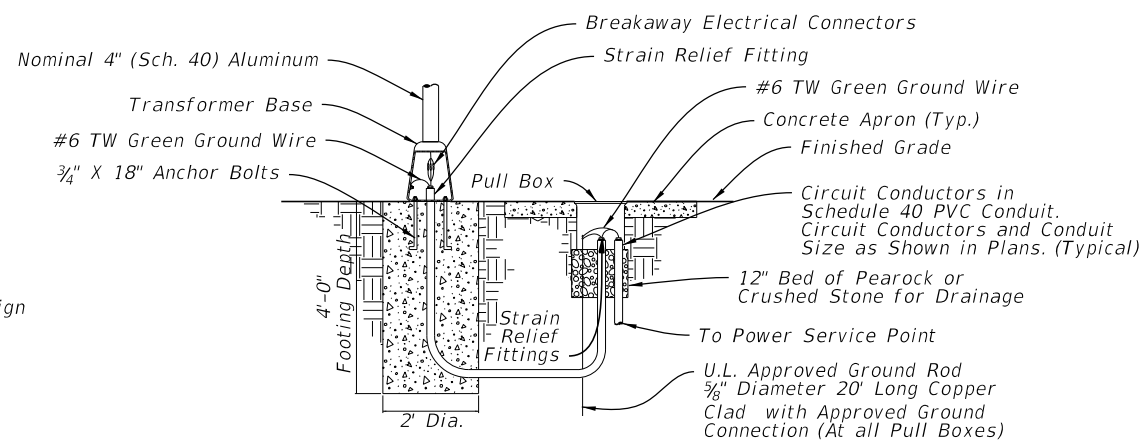
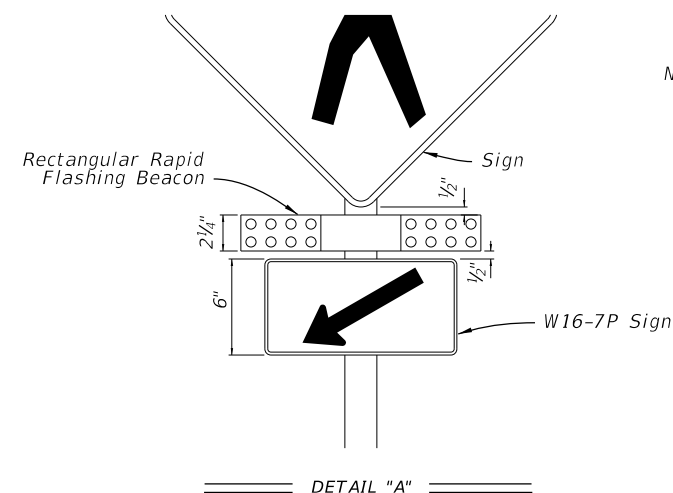
THE OFFICIAL RECORD OF THIS SHEET IS THE ELECTRONIC FILE DIGITALLY SIGNED AND SEALED UNDER RULE 61G15-23.004, F.A.C.

RRFB NOTES:

1. ADHERE TO REQUIREMENTS IN THE JANUARY 2021 "LEE COUNTY DEPARTMENT OF TRANSPORTATION PLAN SPECIFICATIONS FOR SIGNAL & STREET LIGHTING". THERE ARE TWO LIGHTING SECTIONS UNDER THE SPECIFICATIONS, THE CONTRACTOR SHALL FOLLOW THE FLASHERS/RECTANGULAR RAPID FLASHING BEACON (RRFB) SECTION. CONTACT LEE COUNTY DEPARTMENT OF TRANSPORTATION (LCDOT) TO OBTAIN THE SPECIFICATIONS AND FOR ANY QUESTIONS REGARDING EQUIPMENT OR INSTALLATION REQUIREMENTS. FOLLOW THE FDOT GOVERNING STANDARDS AND SPECIFICATIONS FOR ALL ITEMS NOT COVERED BY THE LEE COUNTY SPECIFICATIONS.
2. A TRANSFORMER BASE IS REQUIRED FOR CONVENTIONALLY-POWERED APPLICATIONS.
3. INSTALL THE RRFB IN PAIRS, ONE ON EITHER SIDE OF APPROACH TRAFFIC.
4. INSTALL CONTROLLER ON THE BACKSIDE OF POST FROM APPROACH TRAFFIC.
5. INSTALL PUSH BUTTON AND R10-25 SIGN IN ACCORDANCE WITH FDOT STANDARD PLANS INDEX 665-001.
6. ENGAGE ALL THREADS ON THE TRANSFORMER BASE AND POST UNLESS THE ALUMINUM POST IS FULLY SEATED INTO BASE.
7. INSTALL A CONCRETE SLAB AROUND ALL PULL BOXES. THE MINIMUM SLAB DIMENSION IS 4'-0" BY 4'-0". IN URBAN AREAS WHERE SPACE IS LIMITED SLAB DIMENSIONS MAY BE ADJUSTED AS SHOWN IN THE PLANS.
8. FOR ASSEMBLIES CONNECTED TO CONVENTIONAL POWER, PROVIDE SINGLE POLE NON-FUSED WATERTIGHT BREAKAWAY ELECTRICAL CONNECTORS IN THE FRANGIBLE TRANSFORMER BASE.
9. WHEN WIRE ENTRY HOLES ARE DRILLED IN THE SIGN COLUMN, USE A BUSHING OR RUBBER GROMMET TO PROTECT CONDUCTORS.
10. PAY ITEM 630-2-11:
THE CONDUITS SHALL BE FITTED WITH BELL ENDS OR EQUIVALENT FITTINGS PRIOR TO THE PULLING OF ANY WIRE INTO THE CONDUITS.
11. PAY ITEM 630-2-12:
THE CONDUITS SHALL BE FITTED WITH BELL ENDS OR EQUIVALENT FITTINGS PRIOR TO THE PULLING OF ANY WIRE INTO THE CONDUITS. ALL DIRECTIONAL BORES UNDER ROADWAY SHALL INCLUDE A SPARE CONDUIT CONTAINING A PULL WIRE AND SEALED WITH A WATER TIGHT CAP.
12. PAY ITEM 639-1-122:
THIS PAY ITEM IS FOR THE COST OF ALL THE POWER SERVICE ASSEMBLY COMPONENTS FOR THE LIGHTING LOAD CENTER. THE LOAD CENTER COST IS UNDER A SEPARATE PAY ITEM NUMBER.
13. PAY ITEM 641-2-12:
CONCRETE SERVICE POLE FOR THE POWER SERVICE ASSEMBLIES SHALL BE 12 FEET.
14. SPARE CONDUIT AT PAVEMENT CROSSINGS SHALL BE CAPPED AT BOTH ENDS.
15. THE LOCATIONS OF EXISTING UTILITIES, AS SHOWN ON THESE PLANS, ARE APPROXIMATE AND BASED ON THE INFORMATION FURNISHED TO THE ENGINEER BY THE UTILITY OWNER(S) AND ARE SHOWN AS NOTICE TO THE CONTRACTOR THAT UNDERGROUND UTILITIES EXIST. THE CONTRACTOR SHALL NOTIFY THE UTILITY COMPANY OWNER(S) FOR LOCATION AND STAKING OF UNDERGROUND FACILITIES BEFORE EXCAVATING.

16. BEFORE EXCAVATING, IT IS REQUIRED THAT NOTICE BE GIVEN TO SUNSHINE STATE ONE CALL OF FLORIDA, INC. (SSOCOF) AT 1-800-432-4770 A MINIMUM OF TWO (2) FULL BUSINESS DAYS BEFORE WORK BEGINS. NOT ALL UTILITY COMPANIES ARE MEMBERS OF SSOCOF.
17. THE LOCATION OF THE CONDUITS AND JUNCTION BOXES ARE DIAGRAMMATIC ONLY AND MAY BE SHIFTED WITHIN THE RIGHT-OF-WAY BY THE THE CONTRACTOR WITH APPROVAL FROM THE ENGINEER TO ACCOMMODATE LOCAL CONDITIONS AND EXISTING UTILITY LOCATIONS.
18. WIRE PULLING INSTRUCTIONS: CONNECT PULLING DEVICES TO COPPER WIRE AND NOT TO JACKET AND MEET MANUFACTURER'S REQUIREMENTS. USE PULLING COMPOUND PER MANUFACTURER'S REQUIREMENTS. ALL BENDS SHALL NOT BE LESS THAN RECOMMENDED BY THE NEC OR NESC FOR CABLE USED.
19. ALL CONDUIT TRENCHES SHALL BE BACKFILLED COMPLETELY TO PROVIDE SAFE CROSSING BY THE END OF EACH WORKING DAY OR WHENEVER THE WORK ZONE BECOMES INACTIVE. THE CONTRACTOR SHALL NOT OPEN ANY AREA THAT CANNOT BE BACKFILLED IN THE SAME WORK PERIOD.
20. THE CONTRACTOR SHALL MAINTAIN ACCESS TO ALL SIDE STREETS, PRIVATE AND COMMERCIAL DRIVEWAYS AT ALL TIMES DURING THE CONSTRUCTION OPERATION.
21. THE CONTRACTOR SHALL BE AWARE THAT NO TEST BORINGS WERE MADE WHERE CONDUIT OR PULL BOXES ARE TO BE INSTALLED. THE CONTRACTOR SHALL BE RESPONSIBLE FOR EXAMINING THE JOB SITE CONDITIONS BEFORE SUBMITTING BID PROPOSALS.
22. ALL CONDUIT INSTALLATION NEAR TREES SHALL MEET ANSI A300 STANDARDS.
23. POWER SERVICE ASSEMBLY, LOAD CENTER AND SERVICE CONNECTIONS:
- THE POWER SOURCE IS THE EXISTING FPL PAD MOUNTED TRANSFORMER #353206 AS DEPICTED ON THE PLANS.
- THE POWER SERVICE ASSEMBLY SHALL HAVE CONDUIT WITH SERVICE WIRE RUNNING TO THE LEFT FRONT CORNER OF THE TRANSFORMER. THE FACE OF THE FRONT IS ON THE NORTH SIDE OF THE TRANSFORMER.
24. ALL LOW VOLTAGE (LV) CABLING FROM THE PRIMARY RRFB'S TO THE SECONDARY RRFB'S SHALL BE INCLUDED IN THE COST OF THE RRFB.
25. PAY ITEM 715-1-12
ALL CONDUCTOR SPLICING SHALL BE IN EITHER A PULL BOX OR TRANSFORMER BASE AND FOLLOW SECTION 715-9 SPLICING IN THE FDOT SPECIFICATIONS.

- CONTACT JULIAN MONTENEGRO (FP&L) AT PHONE: (941) 423-4833 AND/OR EMAIL: JULIAN.MONTENEGRO@FPL.COM OR THE LOCAL FP&L SERVICE PLANNER A MINIMUM OF FOUR (4) WEEKS PRIOR TO INSTALLING THE METER CAN AND THE TIME NEEDED TO OPEN THE TRANSFORMER BY FP&L TO STUB UP CONDUIT INSIDE THE TRANSFORMER AND PULL THE SERVICE WIRE. THE CONTRACTOR SHALL NOT OPEN OR PUSH THE CABLES INTO THE TRANSFORMER WITHOUT A FP&L CREW PRESENT.
- FPL& MUST OPEN THE TRANSFORMER AND BE PRESENT DURING ALL WORK WITHIN THE TRANSFORMER.
- AS AN OPTION, EMPTY CONDUIT CAN BE INSTALLED TO THE OUTSIDE OF THE FRONT LEFT SIDE OF THE TRANSFORMER AND THEN PULL THE WIRES ON AN ADVANCED STAND-BY APPOINTMENT SET-UP WITH FP&L.
- THE METER-CAN, LOAD CENTER, ETC. SHALL BE INSTALLED A MINIMUM OF 8 FEET FROM THE FPL PAD MOUNTED TRANSFORMER AND 10 FEET FROM THE CLOSEST PART OF THE FPL SWITCH CABINET.
- THE POWER SERVICE AND CONNECTION SHALL BE INSTALLED TO MEET LOCAL CODES, NESC AND FPL'S STANDARDS.
- OBTAIN AND FOLLOW FPL'S STANDARDS LOCATED AT WWW.FPL.COM/PARTNER/BUILDERS/SERVICE-STANDARDS.HTML AND WWW.FPL.COM/CONTENT/DAM/FPL/US/PARTNER/PDF/ELECTRIC-SERVICE-STANDARDS.PDF.
- THE SETS OF TRIPLEX SERVICE CABLES TO THE TRANSFORMER SHALL NOT EXCEED 5-SETS, WITH A MAXIMUM CABLE SIZE OF 4/0. THE 5-SETS OF CABLES IS THE TOTAL BETWEEN THE PROPOSED RRFB POWER SERVICE ASSEMBLY AND THE PROPOSED STREET LIGHTING POWER SERVICE ASSEMBLY AS SHOWN IN THE LIGHTING PLANS.



POLE WIRING AND FOOTING DETAIL

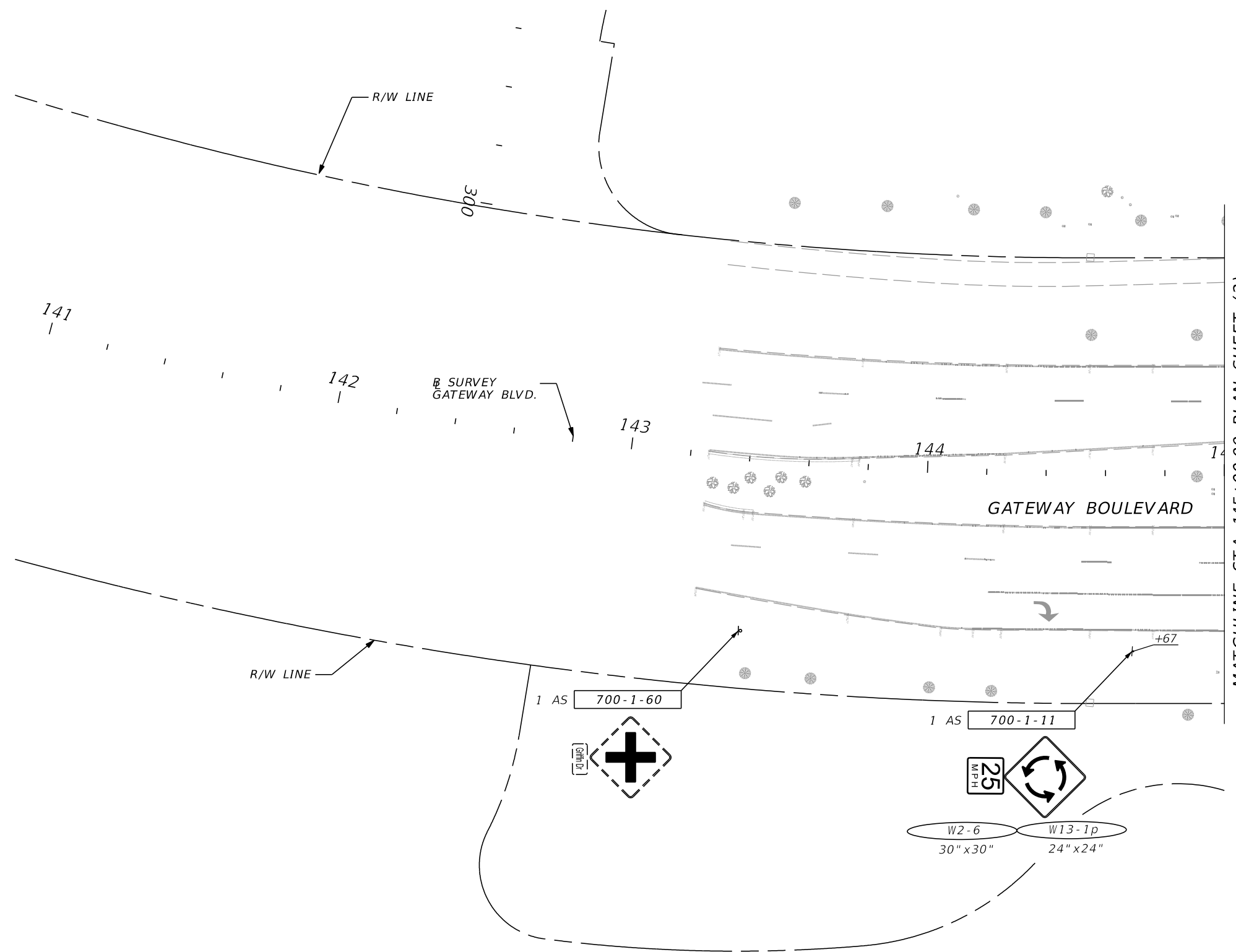
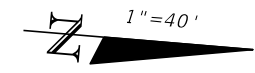
| REVISIONS | | | |
|-----------|-------------|------|-------------|
| DATE | DESCRIPTION | DATE | DESCRIPTION |
| | | | |

JASON Y. YAM, P.E.
P.E. LICENSE NUMBER 62449
CARDNO, INC.
380 PARK PLACE BOULEVARD, SUITE 300
CLEARWATER, FLORIDA 33759



GATEWAY BOULEVARD AT GRIFFIN DRIVE
INTERSECTION CONTROL (ROUNDAABOUT)
RRFB NOTES AND DETAILS

COUNTY PROJECT NO. 200671
SHT. NO. S-4



MATCHLINE STA. 145+00.00 PLAN SHEET (2)

| REVISIONS | | | |
|-----------|-------------|------|-------------|
| DATE | DESCRIPTION | DATE | DESCRIPTION |
| | | | |

JASON Y. YAM, P.E.
 P.E. LICENSE NUMBER 62449
 CARDNO, INC.
 380 PARK PLACE BOULEVARD, SUITE 300
 CLEARWATER, FLORIDA 33759

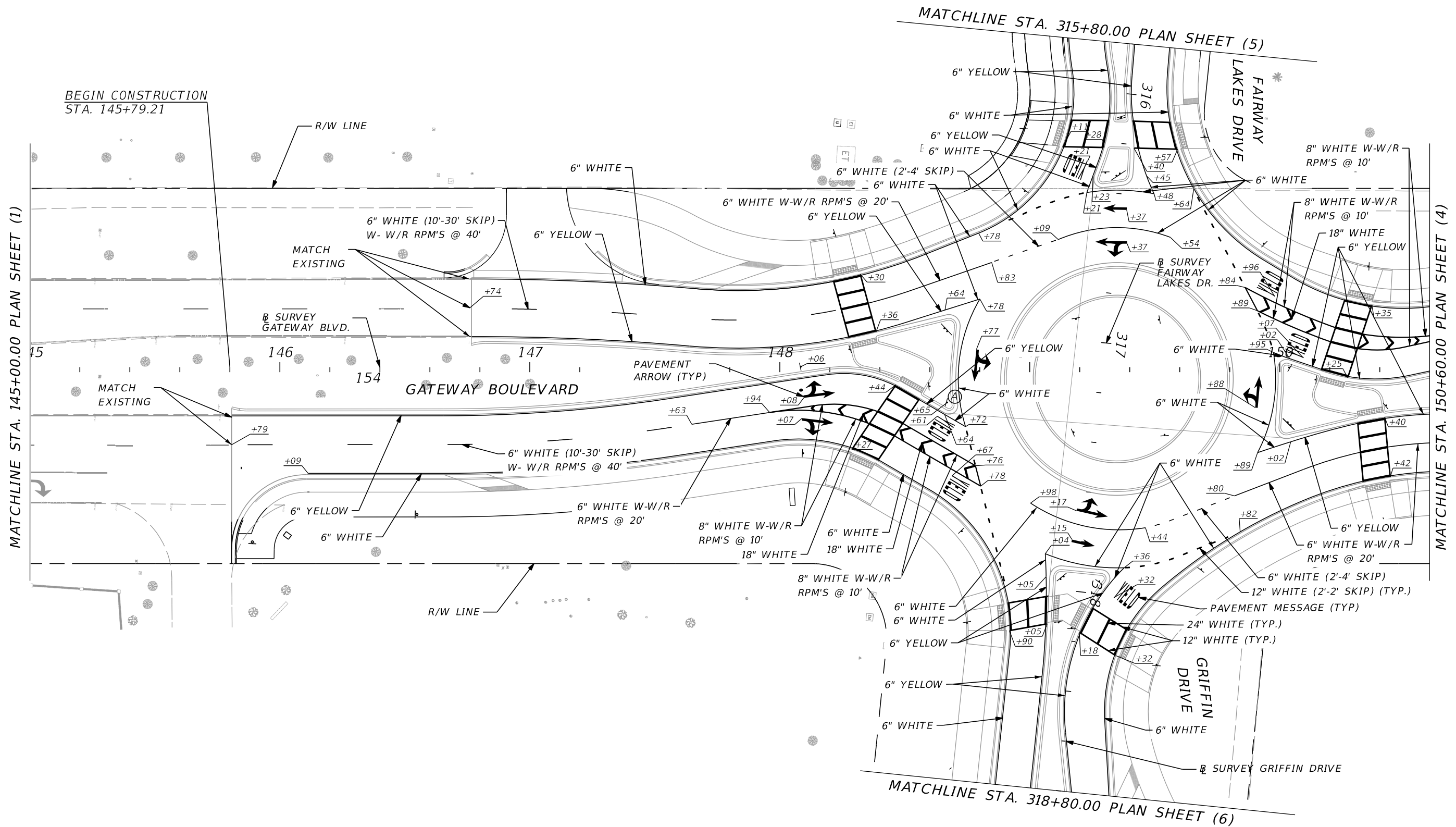
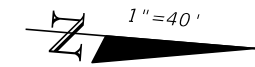


GATEWAY BOULEVARD AT GRIFFIN DRIVE
 INTERSECTION CONTROL (ROUNDAABOUT)
SIGNING AND PAVEMENT MARKINGS (1)

| | |
|--------------------|----------|
| COUNTY PROJECT NO. | SHT. NO. |
| 200671 | S-5 |

THE OFFICIAL RECORD OF THIS SHEET IS THE ELECTRONIC FILE DIGITALLY SIGNED AND SEALED UNDER RULE 61G15-23.004, F.A.C.

* NOTE - FOR CLARITY, ONLY PAVEMENT MARKINGS ARE SHOWN ON THIS SHEET. SEE SHEET S-7 FOR SIGNS AND RELATED ITEMS.



| REVISIONS | | | |
|-----------|-------------|------|-------------|
| DATE | DESCRIPTION | DATE | DESCRIPTION |
| | | | |

JASON Y. YAM, P.E.
P.E. LICENSE NUMBER 62449
CARDNO, INC.
380 PARK PLACE BOULEVARD, SUITE 300
CLEARWATER, FLORIDA 33759

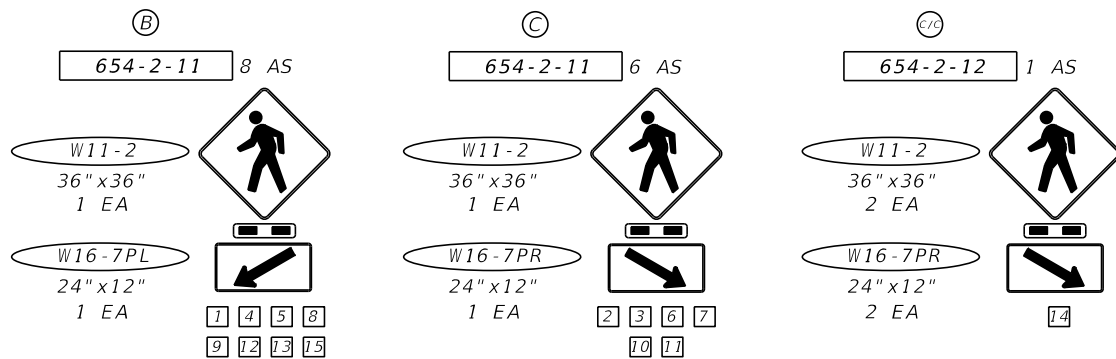
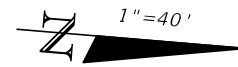


GATEWAY BOULEVARD AT GRIFFIN DRIVE
INTERSECTION CONTROL (ROUNDBABOUT)
SIGNING AND PAVEMENT MARKINGS (2)

| | |
|--------------------|----------|
| COUNTY PROJECT NO. | SHT. NO. |
| 200671 | S-6 |

THE OFFICIAL RECORD OF THIS SHEET IS THE ELECTRONIC FILE DIGITALLY SIGNED AND SEALED UNDER RULE 61G15-23.004, F.A.C.

* NOTE - FOR CLARITY ONLY SIGNS AND RELATED ITEMS ARE SHOWN ON THIS SHEET. SEE SHEET S-6 FOR PAVEMENT MARKINGS.



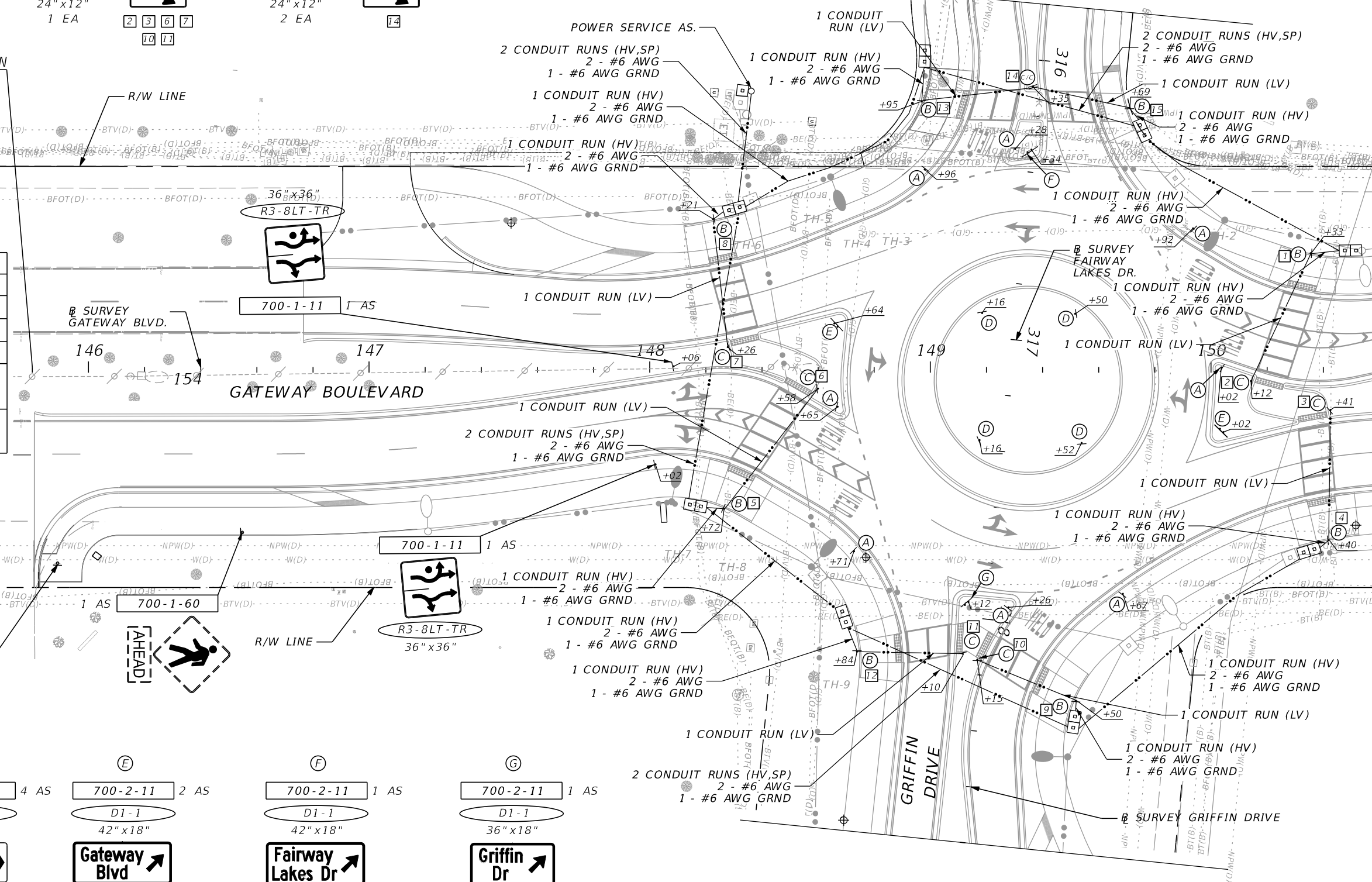
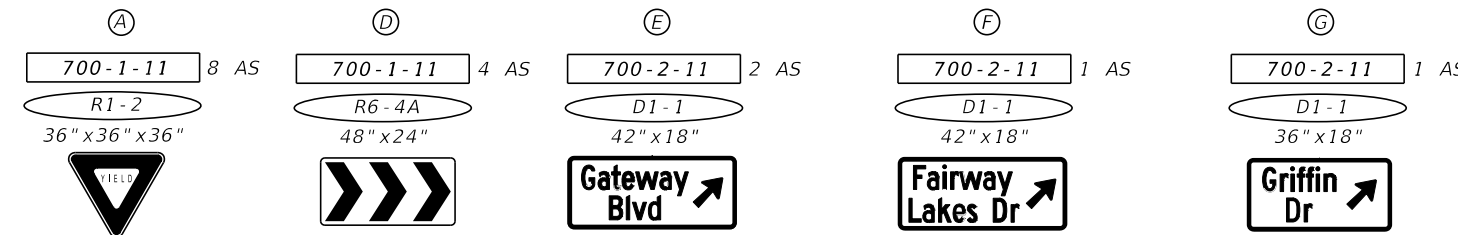
- PRIMARY RRFB'S
 1 4 5 8 9 12 13 15
- SECONDARY RRFB'S
 2 3 6 7 10 11 14

BEGIN CONSTRUCTION
 STA. 145+79.21

RRFB FLASHER TIMINGS

| CROSSING | FLASHERS | TIMINGS |
|-----------------------|------------|---------|
| N ENTRY | 1 2 | 17 SEC |
| N EXIT | 3 4 | 16 SEC |
| S ENTRY | 5 6 | 17 SEC |
| S EXIT | 7 8 | 16 SEC |
| E ENTRY and E EXIT | 9 10 11 12 | 22 SEC |
| W ENTRY and W EXIT | 13 14 15 | 21 SEC |

STOP EXISTING SIGN
 TO REMAIN



| REVISIONS | | | |
|-----------|-------------|------|-------------|
| DATE | DESCRIPTION | DATE | DESCRIPTION |
| | | | |

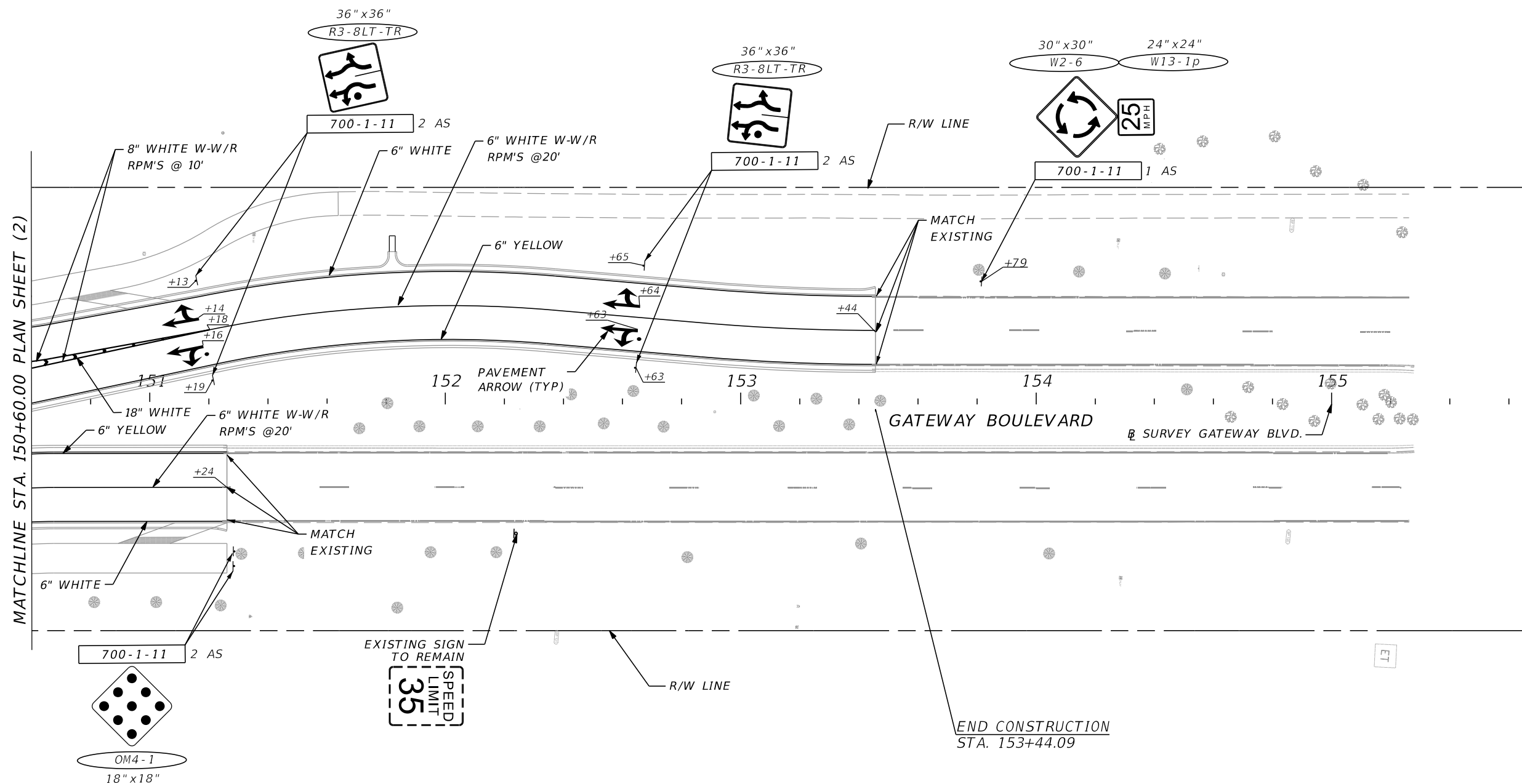
JASON Y. YAM, P.E.
 P.E. LICENSE NUMBER 62449
 CARDNO, INC.
 380 PARK PLACE BOULEVARD, SUITE 300
 CLEARWATER, FLORIDA 33759



GATEWAY BOULEVARD AT GRIFFIN DRIVE
 INTERSECTION CONTROL (ROUNDABOUT)
**SIGNING AND PAVEMENT
 MARKINGS (3)**

| COUNTY PROJECT NO. | SHT. NO. |
|-----------------------|----------|
| 200671 | S-7 |

THE OFFICIAL RECORD OF THIS SHEET IS THE ELECTRONIC FILE DIGITALLY SIGNED AND SEALED UNDER RULE 61G15-23.004, F.A.C.



MATCHLINE STA. 150+60.00 PLAN SHEET (2)

| REVISIONS | | | |
|-----------|-------------|------|-------------|
| DATE | DESCRIPTION | DATE | DESCRIPTION |
| | | | |

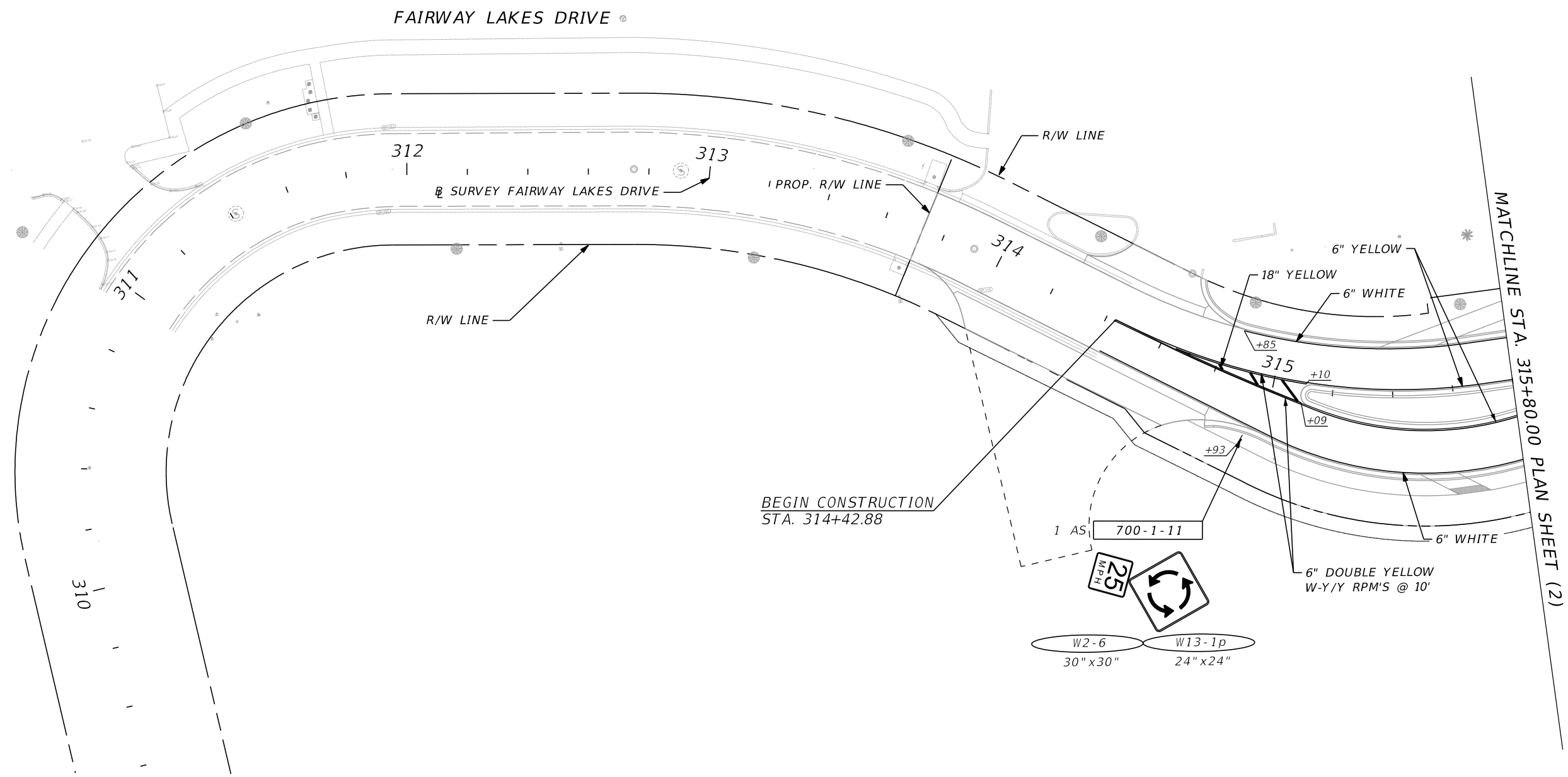
JASON Y. YAM, P.E.
 P.E. LICENSE NUMBER 62449
 CARDNO, INC.
 380 PARK PLACE BOULEVARD, SUITE 300
 CLEARWATER, FLORIDA 33759



GATEWAY BOULEVARD AT GRIFFIN DRIVE
 INTERSECTION CONTROL (ROUNDBOUT)
SIGNING AND PAVEMENT MARKINGS (4)

| | |
|--------------------|----------|
| COUNTY PROJECT NO. | SHT. NO. |
| 200671 | S-8 |

THE OFFICIAL RECORD OF THIS SHEET IS THE ELECTRONIC FILE DIGITALLY SIGNED AND SEALED UNDER RULE 61G15-23.004, F.A.C.



| REVISIONS | | | |
|-----------|-------------|------|-------------|
| DATE | DESCRIPTION | DATE | DESCRIPTION |
| | | | |

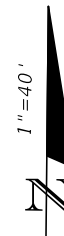
JASON Y. YAM, P.E.
P.E. LICENSE NUMBER 62449
CARDNO, INC.
380 PARK PLACE BOULEVARD, SUITE 300
CLEARWATER, FLORIDA 33759



GATEWAY BOULEVARD AT GRIFFIN DRIVE
INTERSECTION CONTROL (ROUNDAABOUT)
SIGNING AND PAVEMENT MARKINGS (5)

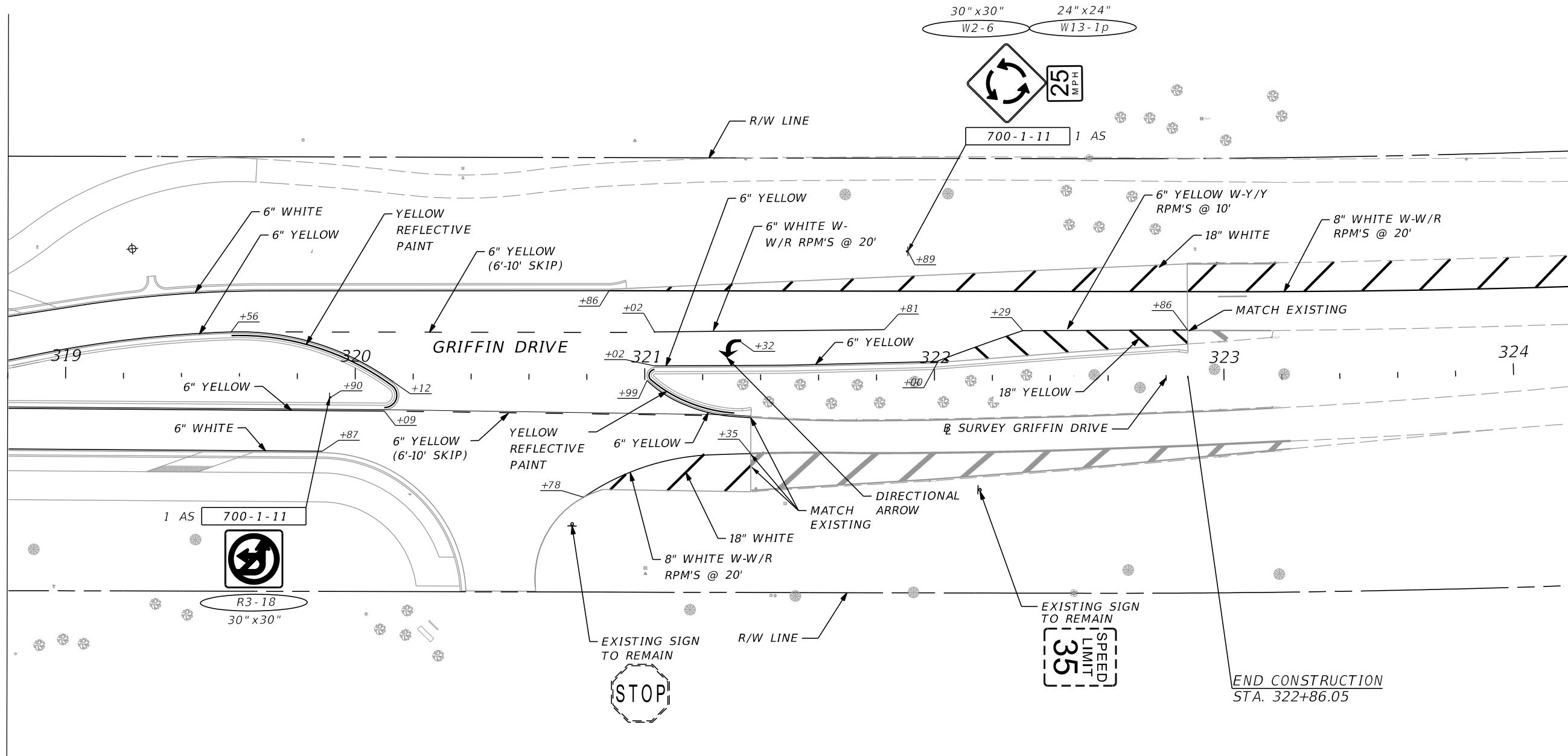
| | |
|--------------------|----------|
| COUNTY PROJECT NO. | SHT. NO. |
| 200671 | S-9 |

THE OFFICIAL RECORD OF THIS SHEET IS THE ELECTRONIC FILE DIGITALLY SIGNED AND SEALED UNDER RULE 61G15-23.004, F.A.C.



MATCHLINE STA. 318+80.00 PLAN SHEET (2)

MATCHLINE STA. 324+20.00 PLAN SHEET (6)



| REVISIONS | | | |
|-----------|-------------|------|-------------|
| DATE | DESCRIPTION | DATE | DESCRIPTION |
| | | | |

JASON Y. YAM, P.E.
P.E. LICENSE NUMBER 62449
CARDNO, INC.
380 PARK PLACE BOULEVARD, SUITE 300
CLEARWATER, FLORIDA 33759



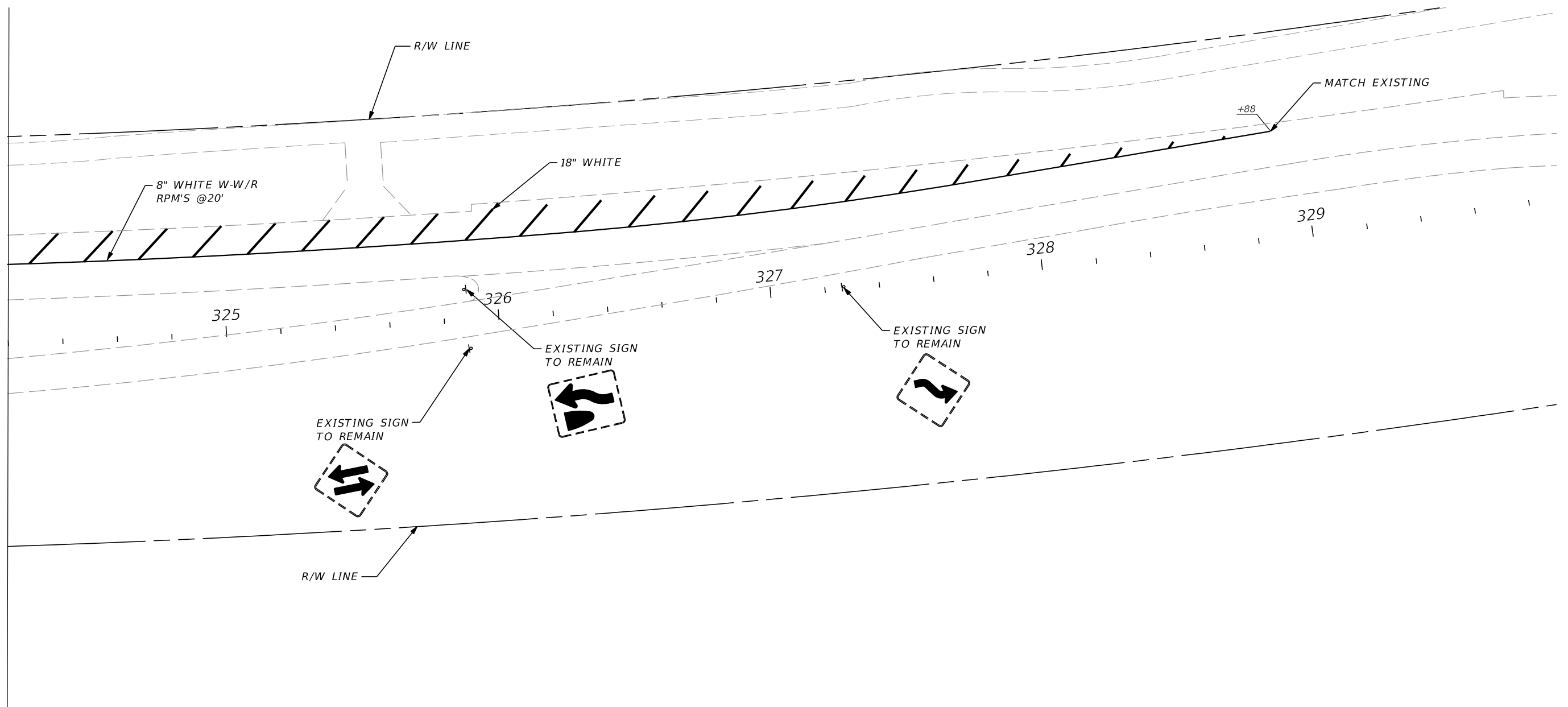
GATEWAY BOULEVARD AT GRIFFIN DRIVE
INTERSECTION CONTROL (ROUNDABOUT)
SIGNING AND PAVEMENT MARKINGS (6)

COUNTY PROJECT NO. 200671
SHT. NO. S-10

THE OFFICIAL RECORD OF THIS SHEET IS THE ELECTRONIC FILE DIGITALLY SIGNED AND SEALED UNDER RULE 61G15-23.004, F.A.C.



MATCHLINE STA. 324+20.00 PLAN SHEET (6)



| REVISIONS | | | |
|-----------|-------------|------|-------------|
| DATE | DESCRIPTION | DATE | DESCRIPTION |
| | | | |

JASON Y. YAM, P.E.
 P.E. LICENSE NUMBER 62449
 CARDNO, INC.
 380 PARK PLACE BOULEVARD, SUITE 300
 CLEARWATER, FLORIDA 33759



GATEWAY BOULEVARD AT GRIFFIN DRIVE
 INTERSECTION CONTROL (ROUNDAABOUT)
SIGNING AND PAVEMENT
MARKINGS (7)

| | |
|--------------------|----------|
| COUNTY PROJECT NO. | SHT. NO. |
| 200671 | S-11 |

THE OFFICIAL RECORD OF THIS SHEET IS THE ELECTRONIC FILE DIGITALLY SIGNED AND SEALED UNDER RULE 61G15-23.004, F.A.C.

