

EXHIBIT B
Pg. 1 of 2



Department of Transportation
Lee County
Southwest Florida

ADOPTED SEPTEMBER 15, 1993 PER RESOLUTION #93-09-51
 AMENDED OCTOBER 28, 1997 PER RESOLUTION #97-051A
 AMENDED AS PART OF FDOT PERMIT #98-A-192.0013
 AMENDED APRIL 18, 2000 PER RESOLUTION #00-04-09
 AMENDED NOVEMBER 14, 2009 PER RESOLUTION #09-11-14
 AMENDED AUGUST 15, 2017 PER RESOLUTION #17-08-11
 AMENDED MARCH 3, 2020 PER RESOLUTION #20-03-10

BEN C. PRATT/SIX MILE CYPRESS PARKWAY & ORTIZ AVENUE
DESIGNATED ACCESS POINTS

000352801R1.DWG

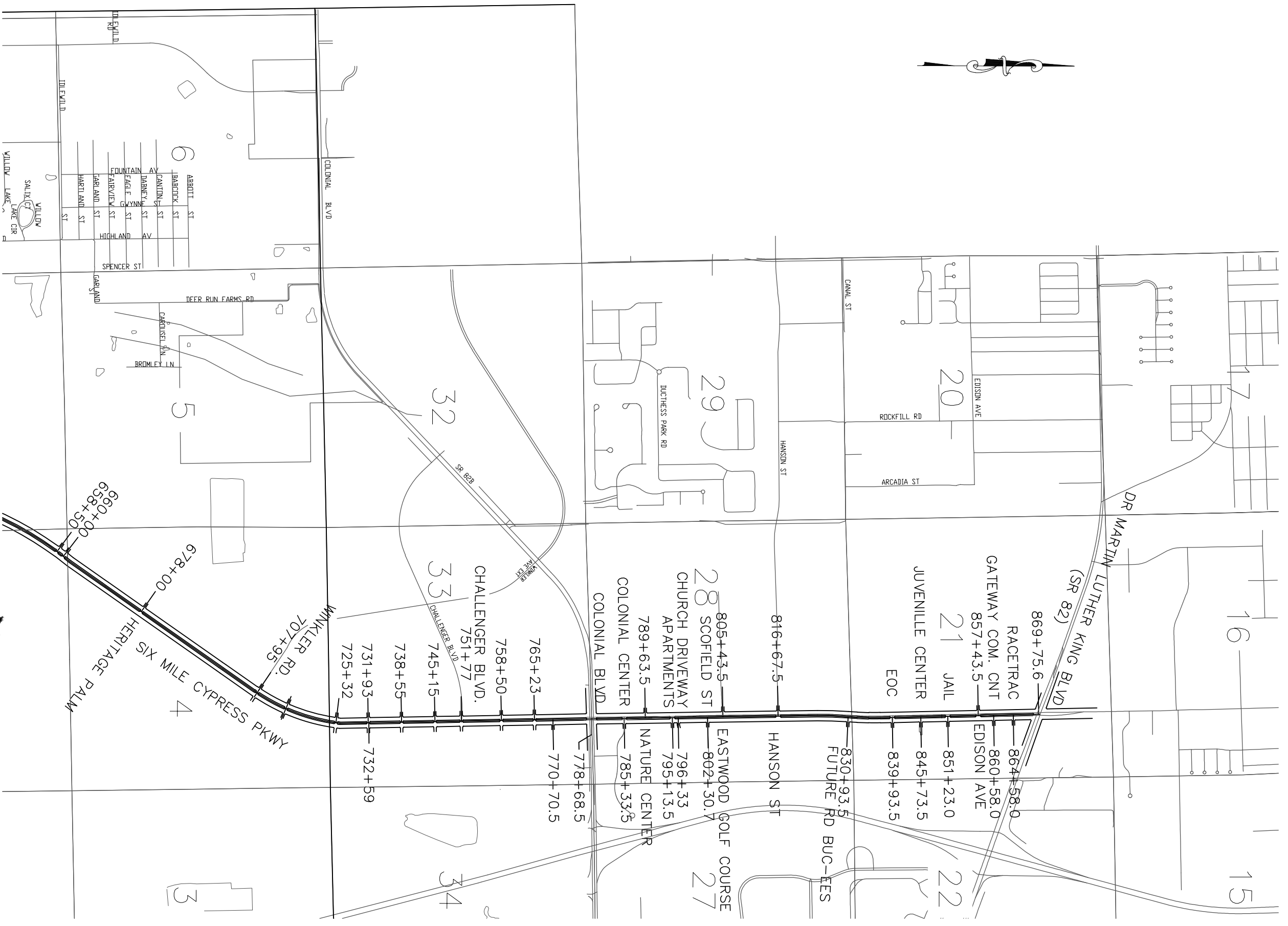


EXHIBIT B
Pg. 2 of 2



Department of Transportation
Lee County
Southwest Florida

ADOPTED SEPTEMBER 15, 1993 PER RESOLUTION #93-09-51
 AMENDED OCTOBER 28, 1997 PER RESOLUTION #97-051A
 AMENDED AS PART OF FDOT PERMIT #98-A-192.0013
 AMENDED APRIL 18, 2000 PER RESOLUTION #00-04-09
 AMENDED NOVEMBER 14, 2009 PER RESOLUTION #09-11-14
 AMENDED AUGUST 15, 2017 PER RESOLUTION #17-08-11
 AMENDED MARCH 3, 2020 PER RESOLUTION #20-03-10

BEN C. PRATT/SIX MILE CYPRESS PARKWAY & ORTIZ AVENUE
DESIGNATED ACCESS POINTS