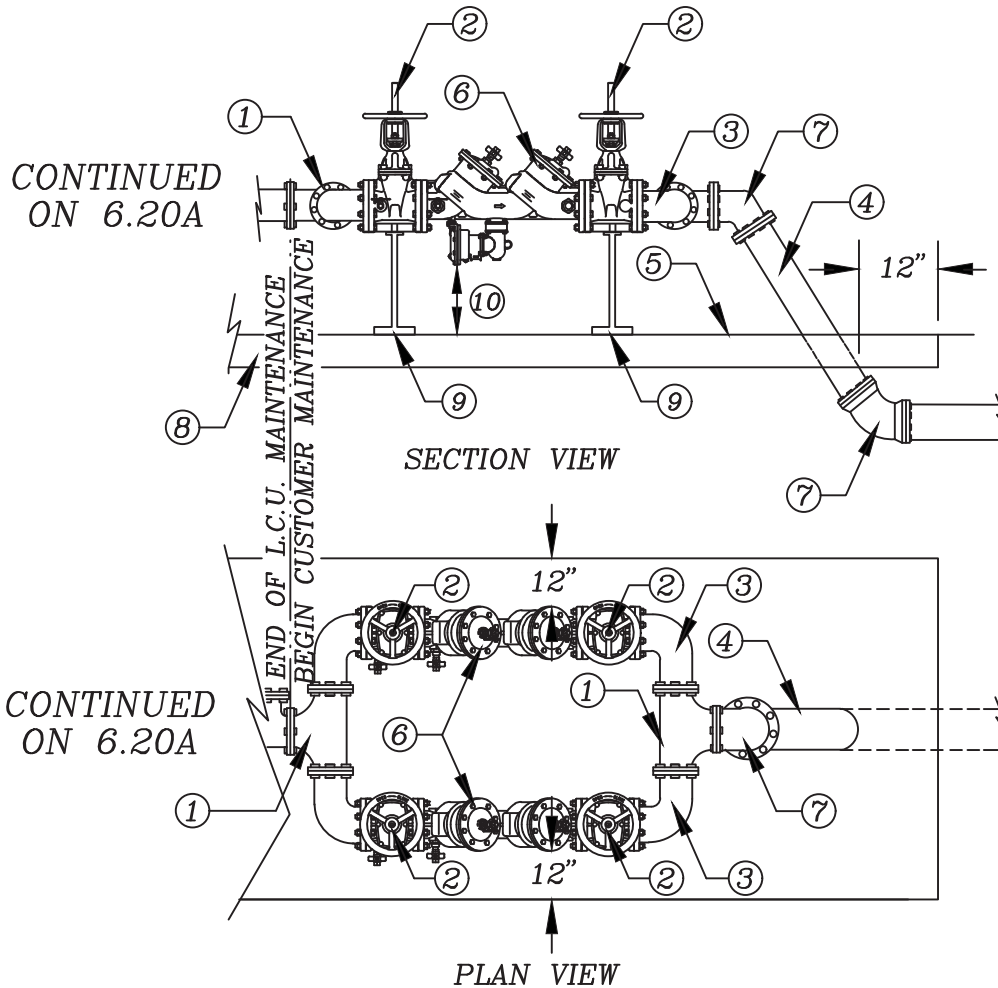


STANDARD DETAIL NO. 6.20B LEE COUNTY UTILITIES

3" OR LARGER METER AND CROSS CONNECTION CONTROL ASSEMBLY

N.T.S.



- | | |
|---|---|
| <ul style="list-style-type: none"> ① TEE ② OS & Y GATE VALVE ③ 90° BEND ④ ALL PIPING D.I.P. ⑤ FINISH GRADE ⑥ LCU APPROVED DOUBLE CHECK VALVE ASSEMBLY | <ul style="list-style-type: none"> ⑦ 45° OR 90° ELBOW M.J. W/ RETAINER GLANDS ABOVE GROUND FITTINGS TO BE FLANGED ⑧ 4" THICK CONCRETE PAD 3000 P.S.I., MIN. ⑨ STAINLESS STEEL OR HOT DIPPED GALVANIZED ADJUSTABLE PIPE STANDS (SEE LCU STANDARD DETAIL) ⑩ 12" MIN. TO 24" MAX. FROM FINISH GRADE TO LOWEST POINT ALL FITTINGS |
|---|---|

NOTES: 1. IF UNINTERRUPTED SERVICE IS NOT REQUIRED, A SINGLE BACKFLOW PREVENTION DEVICE MAY BE INSTALLED, AND TEES AND BENDS ELIMINATED.

2. ALL PLANTING SHALL BE A MINIMUM OF 1.5' FROM THE EDGE OF SLAB AND SHALL PROVIDE A 3' ACCESS OPENING.