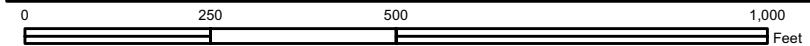
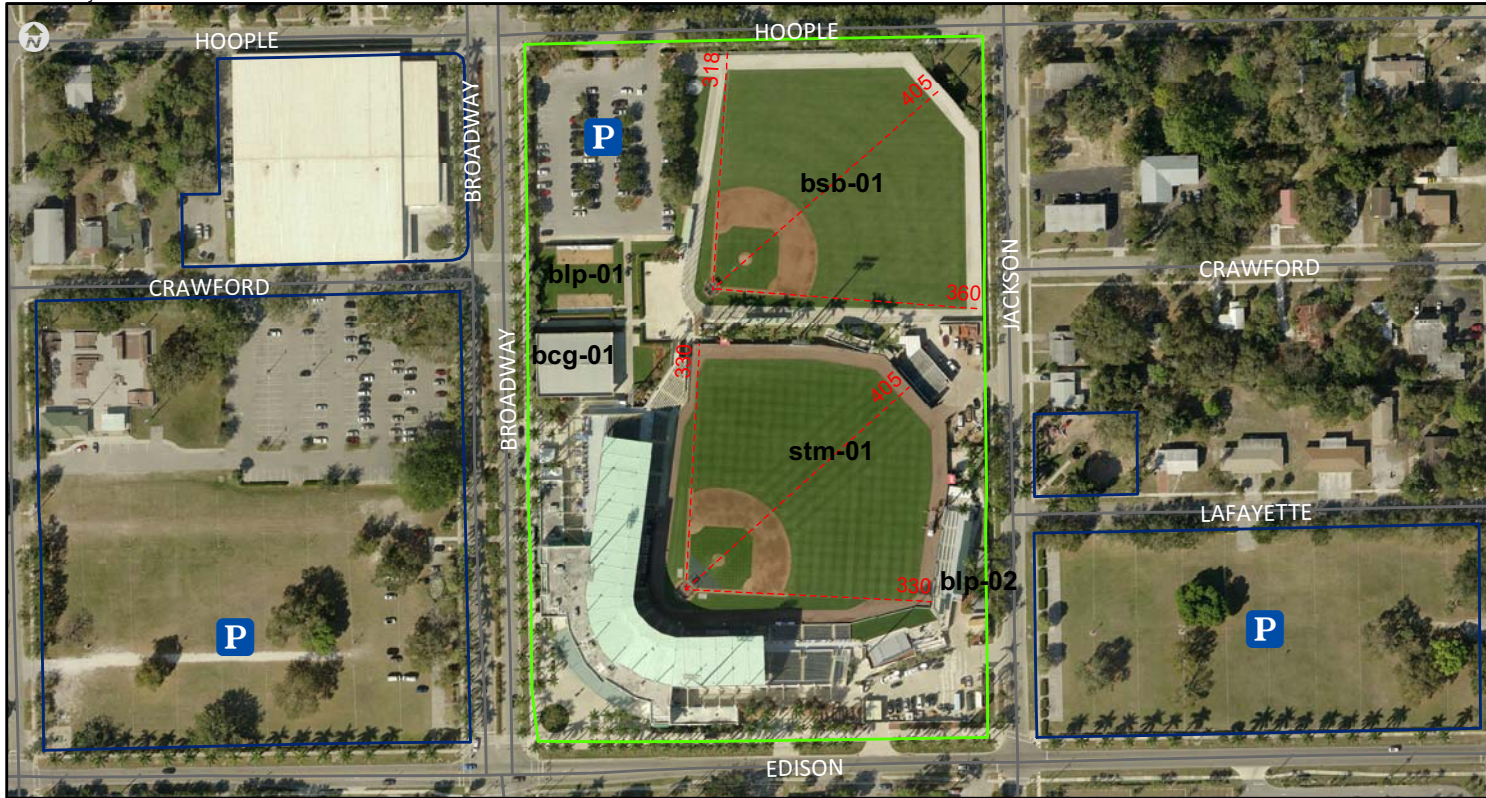


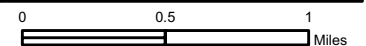
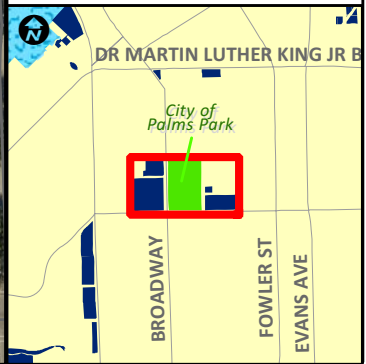


Home of the Boston Red Sox Spring Training 1993 to 2011

Created by: dcalvert 05.2012



Restrooms Yes
Concession Stands Yes
Misc Comments: 2004 World Series Champion Red Sox Spring Training Stadium. In December of 2003, ownership was transferred to Lee County. In February of 2012 the Red Sox moved into their new stadium at JetBlue Park. Parking Capacity 950. Outfield wall padded.



DESCRIPTION	FACILITIES	Lights	Seating	Basepath	Mound	Infield	Outfield fence	Dugouts	Scoreboard
Stadium	stm-01	YES	7,500	90 ft	60 ft	Grass	6'	Covered	YES
Large Baseball Field	bsb-01	NO	50	90 ft	60 ft	Grass	6'	Covered	YES
(3) Batting Cages	bcg-01	YES						Covered	
(5) Bull-Pens	blp-01	YES							
(2) Bull-Pens	blp-02	NO							

