



Procurement Management Department
1500 Monroe Street 4th Floor
Fort Myers, FL 33901
Main Line: (239) 533-8881
Fax Line: (239) 485-8383
www.leegov.com/procurement

Posted Date: September 25, 2017

Solicitation No.: B170422ANB

Solicitation Name: Construction – Traffic Signal Replacement at Lee Blvd.

Subject: Addendum Number 3

See Addendum 3-Form 1a Bid/Proposal Form

NOTE: FAILURE TO USE AN ADDENDUMS REVISED BID/PROPOSAL FORM SHALL DEEM BIDDER NON-RESPONSIVE.

ATTACHMENT: Addendum 3-Form 1a-Bid/Proposal Form.

ATTACHMENT: Updated Plan Diagram and TOQ

The following represents clarification, additions, deletions, and/or modifications to the above referenced bid. This addendum shall hereafter be regarded as part of the solicitation. Items not referenced herein remain unchanged, including the response date. Words, phrases or sentences with a strikethrough represent deletions to the original solicitation. Underlined words and bolded, phrases or sentences represent additions to the original solicitation.

1.	How many conduits are required for each directional bore crossing; see Pay Item #630-2-12.
Answer	Conduit run call-outs added to plan. (See Attached)

2.	Does the bore quantity (1,600lf) reflect the linear foot of bore or conduits required for each bore? Can the EOR provide the quantity of conduits required for each bore? Typical the bore length is shown and the # of conduits, in each bore, is noted; contractor determines the length/lengths of conduit required for each bore.
Answer	Conduit run call-outs added to plan. (See Attached)


3.	Plan sheet T-4 reflects Pay Item #630-2-11 @ 148lf but this item is not on the bid schedule.
Answer	Pay item added to TOQ sheet, length revised.

4.	The plans do not include Pay Item #632-7-1, this will be required to rewire the intersection/loops, prior to the cabinet being relocated (Pay Item #670-5-500).
Answer	Pay item added to TOQ sheet.

5.	Can the EOR show the existing in-pavement loops on T-4, this will assist contractors in providing the linear foot of homerun cable, with Pay Item #632-7-1, back to the relocated cabinet?
Answer	Loops shown based on previous plan locations, not field verified.
6.	Can we add Pay Item # 641-2-12 Prestressed Concrete Pole, Furnish & Install, Type P-II Service Pole for the Electrical Service and Disconnect, Pay Items 639-1-22/639-3-11? The Concrete Pole is not incidental to these Pay Items.
Answer	Pay item added, but not sure what it is needed for.
7.	I also noted Pay Item 635-2-10, 1 each, on plan sheet T-4 which is not called out for on the TOQ or the Bid Schedule.
Answer	Pay item added to TOQ sheet.
8.	Can we have a Mobilization item, Pay Item 101-1, added to the Bid Schedule?
Answer	Pay item added to TOQ sheet.

BIDDER/PROPOSER IS ADVISED, YOU ARE REQUIRED TO ACKNOWLEDGE RECEIPT OF THIS ADDENDUM WHEN SUBMITTING A BID/PROPOSAL. FAILURE TO COMPLY WITH THIS REQUIREMENT MAY RESULT IN THE BIDDER/PROPOSER BEING CONSIDERED NON-RESPONSIVE.

ALL OTHER TERMS AND CONDITIONS OF THE SOLICITATION DOCUMENTS ARE AND SHALL REMAIN THE SAME.


 Procurement Analyst
 Lee County Procurement Management



Lee County Procurement Management
BID/PROPOSAL FORM

Company Name: _____

Solicitation # **B170422/ANB** Solicitation Name **Traffic Signal Replacement at Lee Blvd**

Having carefully examined the “Terms and Conditions”, and the “Detailed Scope of Work”, all of which are contained herein, propose to furnish the following, which meet these specifications.

Term

From Notice to Proceed or Purchase Order date, whichever applies: **150** calendar days to substantial completion, **30** calendar days to final completion (total days **180**).

Liquidated Damages (Construction) Liquidated damages of **\$760.00** per calendar day(s) will be assessed to the contractor/vendor for each consecutive calendar day completion of the project or work is delayed.

Traffic Signal Replacement at Lee Blvd

<u>ITEM</u>	<u>DESCRIPTION</u>	<u>UNIT</u>	<u>QTY</u>	<u>UNIT PRICE</u>	<u>AMOUNT</u>
101-1	Mobilization	LS	1		
630-2-11	Conduit, F&I, Open Trench	LF	150		
630-2-12	Conduit, Furnish & Install Directional Bore	LF	555		
632-7-1	Signal Cable-New or Reconstructed Intersection, F&I	EA	1		
633-1-121	Fiber Optic Cable, F&I, Underground, 2-2 Fibers	LF	37		
633-2-31	Fiber Optic Connection, Install, Splice	EA	12		
633-3-11	Fiber Optic Connection Hardware, F&I, Splice Enclosure	EA	1		
633-3-12	Fiber Optic Connection Hardware, F&I, Splice Tray	EA	1		
633-3-16	Fiber Optic Connection Hardware, F&I, Splice – Field Terminated	EA	1		
635-2-10	Pull & Junction Boxes (F&I) 30’x48’x24’ Cover Size	EA	1		
635-2-11	Pull & Junction Boxes (F&I) 17’x30’ Cover Size	EA	12		
639-1-22	Electrical Power Service, F&I, Underground, Meter Purchased by Contractor	AS	1		
639-2-1	Electrical Service Wire	LF	68		
639-3-11	Electrical Service Disconnect, F&I, Pole Mount	EA	1		

649-31-999	Mast Arm, F&I, Custom Wind Speed, Custom Arm Length(s)	EA	1		
649-36-300	Mast Arm, Remove Shallow Foundation, Bolt on Attachment	EA	1		
650-1-14	Traffic Signal, Furnish & Install, Aluminum, 3 Section Cluster, 1 Way	AS	3		
650-1-19	Traffic Signal, Furnish & Install, Aluminum, 5 Section Cluster, 1 Way	AS	1		
670-5-500	Traffic Controller Assembly, Relocate Controller with Cabinet	EA	1		
684-1-1	Fiber Switch, Furnish & Install	EA	1		
700-5-21	Internally Illuminated Sign, Furnish & Install, Overhead Mount, Up to 12 SF	EA	3		
BID TOTAL:					
*Quantities are not guaranteed. Final payment will be based on actual quantities.					

BID TOTAL:

(Use words to write total)


TABULATION OF QUANTITIES

PAY ITEM NO.	DESCRIPTION	UNIT	SHEET NUMBERS																				TOTAL THIS SHEET		GRAND TOTAL		REF. SHEET
			T-3																				PLAN	FINAL	PLAN	FINAL	
			PLAN	FINAL	PLAN	FINAL	PLAN	FINAL	PLAN	FINAL	PLAN	FINAL	PLAN	FINAL	PLAN	FINAL	PLAN	FINAL	PLAN	FINAL	PLAN	FINAL					
101-1	MOBILIZATION	LS	1																								
630-2-11	CONDUIT, F&I, OPEN TRENCH	LF	150																								
630-2-12	CONDUIT, FURNISH & INSTALL DIRECTIONAL BORE	LF	555																								
632-7-1	SIGNAL CABLE-NEW OR RECONSTRUCTED INTERSECTION, F&I	PI	1																								
633-1-121	FIBER OPTIC CABLE, F&I, UNDERGROUND, 2-2 FIBERS	LF	37																								
633-2-31	FIBER OPTIC CONNECTION, INSTALL, SPLICE	EA	12																								
633-3-11	FIBER OPTIC CONNECTION HARDWARE, F&I, SPLICE ENCLOSURE	EA	1																								
633-3-12	FIBER OPTIC CONNECTION HARDWARE, F&I, SPLICE TRAY	EA	1																								
633-3-16	FIBER OPTIC CONNECTION HARDWARE, F&I, PATCH PANEL- FIELD TERMINATED	EA	1																								
635-2-10	PULL AND JUNCTION BOXES (F&I) 30"x48"x24" COVER SIZE	EA	1																								
635-2-11	PULL AND JUNCTION BOXES (F&I) 17"x30" COVER SIZE	EA	12																								
639-1-22	ELECTRICAL POWER SERVICE, F&I, UNDERGROUND, METER PURCHASED BY CONTRACTOR	AS	1																								
639-2-1	ELECTRICAL SERVICE WIRE	LF	68																								
639-3-11	ELECTRICAL SERVICE DISCONNECT, F&I, POLE MOUNT	EA	1																								
641-2-12	PRESTRESSED CONC POLE, F&I, TYPE P II SERVICE POLE	EA	1																								
649-31-999	MAST ARM, F&I, CUSTOM WIND SPEED, CUSTOM ARM LENGTH(S)	EA	1																								
649-36-300	MAST ARM, REMOVE SHALLOW FOUNDATION, BOLT ON ATTACHMENT	EA	1																								
650-1-14	TRAFFIC SIGNAL, FURNISH & INSTALL, ALUMINUM, 3 SECTION, IWAY	AS	3																								
650-1-19	TRAFFIC SIGNAL, FURNISH & INSTALL, ALUMINUM, 5 SECTION CLUSTER, IWAY	AS	1																								
670-5-500	TRAFFIC CONTROLLER ASSEMBLY, RELOCATE CONTROLLER WITH CABINET	EA	1																								
684-1-1	FIBER SWITCH, FURNISH & INSTALL	EA	1																								
700-5-21	INTERNALLY ILLUMINATED SIGN, FURNISH & INSTALL, OVERHEAD MOUNT, UP TO 12 SF	EA	3																								

NO.	DATE	BY	REVISIONS - DESCRIPTION
1	9/21/17	JWM	REVISED QUANTITIES & PAY ITEMS

T.Y. LIN INTERNATIONAL
 2400 FIRST STREET
 SUITE 200
 FORT MYERS, FLORIDA 33901
 TEL. (239) 332-4846
 FAX. (239) 332-4798
WWW.TYLIN.COM

APPROVED BY:
JAMES MOLNAR, P.E.
 REGISTERED PROFESSIONAL ENGINEER
 FLORIDA CERTIFICATE NO. 49237



PUBLIC WORKS
LEE COUNTY
 SOUTHWEST
 FLORIDA
 1500 MONROE STREET
 FORT MYERS, FLORIDA 33901
 (239) 479-8900 www.lee-county.com/publicworks/ocotile.htm

DEPARTMENT
 of
 TRANSPORTATION

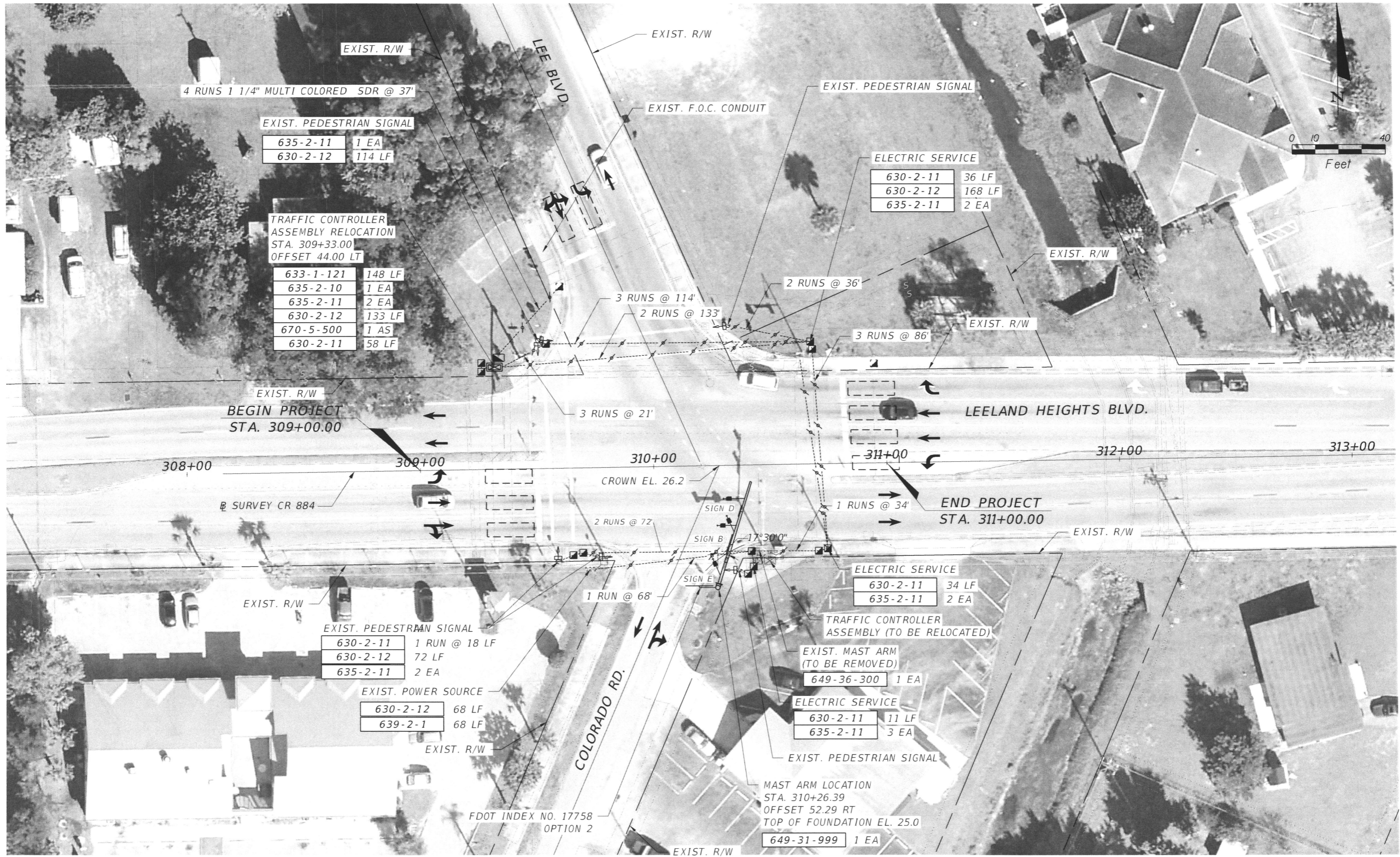
SUSERS SDATES STIMES SFILES

TABULATION OF QUANTITIES

LEELEAND HEIGHTS BLVD.

SHEET NO.
T-2

SMODELNAME\$



NO.	DATE	BY	REVISIONS - DESCRIPTION
1	9/21/17	JWM	ADDED CONDUIT RUN CALL OUTS

T.Y. LIN INTERNATIONAL
 2400 FIRST STREET
 SUITE 200
 FORT MYERS, FLORIDA 33901
 TEL. (239) 332-4846
 FAX. (239) 332-4798
 WWW.TYLIN.COM

APPROVED BY:
JAMES MOLNAR, P.E.
 REGISTERED PROFESSIONAL ENGINEER
 FLORIDA CERTIFICATE NO. 49237

 PUBLIC WORKS
 LEE COUNTY
 SOUTHWEST
 FLORIDA
 1500 MONROE STREET
 FORT MYERS, FLORIDA 33901
 (239) 479-8900 www.lee-county.com/publicworks/office.htm

DEPARTMENT
 of
 TRANSPORTATION
 FORT MYERS, FLORIDA 33901

SUSERS SDATES STIMES

SIGNALIZATION PLAN
LEELEAND HEIGHTS BLVD.

SHEET
 NO.
T-4

SMODELNAME5