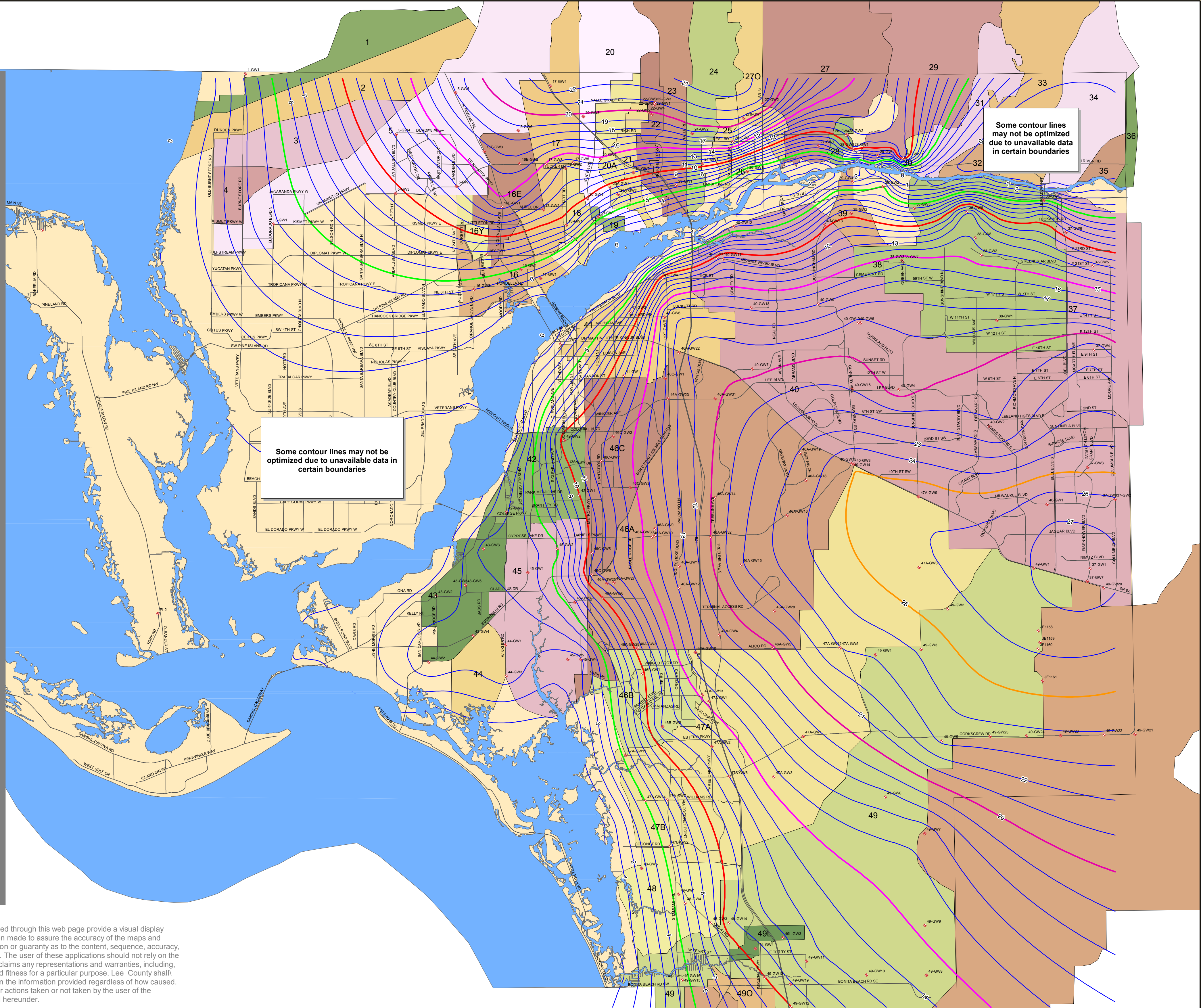


**Legend**

- Elevation**
- 5
  - 10
  - 15
  - 20
  - 25

**WATERSHED**

- 22 Bayshore Creek
- 37 Bedman Creek
- 41 Billy Creek
- 21 Chapel Branch
- Cocohatchee River
- 19 Cohn Branch
- 36 County Line
- 44 Cow Creek
- 33 Cypress Creek
- 20 Daughtrey Creek
- 20A Daughtrey Creek-East Branch
- 43 Deep Lagoon
- 47A Estero River
- 31 Fichter Branch
- 30 Franklin Run
- 5 Gator Slough
- 3 Greenwell Branch
- 47B Halfway Creek
- 16 Hancock Creek
- 45 Hendry Creek
- 38 Hickey Creek
- 49 Imperial River
- 26 Kickapoo Creek
- 49L Leitner Creek
- 4 Longview Run
- 18 Marsh Point
- 35 Miller's Gully
- 46B Mullock Creek
- 490 Oak Creek
- 39 Olga Creek
- 40 Orange River
- 28 Otter Creek
- 270 Owl Creek
- 25 Palm Creek
- 32 Park Branch
- 23 Popash Creek
- 17 Powell Creek
- 46A Six Mile Cypress
- 34 Spanish Creek
- 48 Spring Creek
- 24 Stroud Creek
- 29 Telegraph Creek
- 46C Ten Mile Canal
- 27 Trout Creek
- 42 Whiskey Creek
- 16Y Yellow Fever Creek
- 16E Yellow Fever Creek-East Branch
- 1 Yucca Pen Creek
- Well Locations



Disclaimer: Lee County Natural Resources Information accessed through this web page provide a visual display of data for your convenience. Every reasonable effort has been made to assure the accuracy of the maps and associated data. Lee County makes no warranty, representation or guaranty as to the content, sequence, accuracy, timeliness or completeness of any of the data provided herein. The user of these applications should not rely on the data provided herein for any reason. Lee County explicitly disclaims any representations and warranties, including, without limitation, the implied warranties of merchantability and fitness for a particular purpose. Lee County shall assume no liability for any errors, omissions, or inaccuracies in the information provided regardless of how caused. Lee County shall assume no liability for any decisions made or actions taken or not taken by the user of the applications in reliance upon any information or data furnished hereunder.

LEE COUNTY  
NATURAL RESOURCES  
1500 Monroe St.  
P.O. Box 398  
Fort Myers, FL 33903  
<http://www.lee-county.com>



**LEE COUNTY**  
**Wet Season High Water Table Map**  
**2008-2018 (NAVD 88 Datum)**

2 1 0 2 Miles

Created in ArcGIS using ArcMap  
By: Scott Summerall  
NAVD 88 Datum