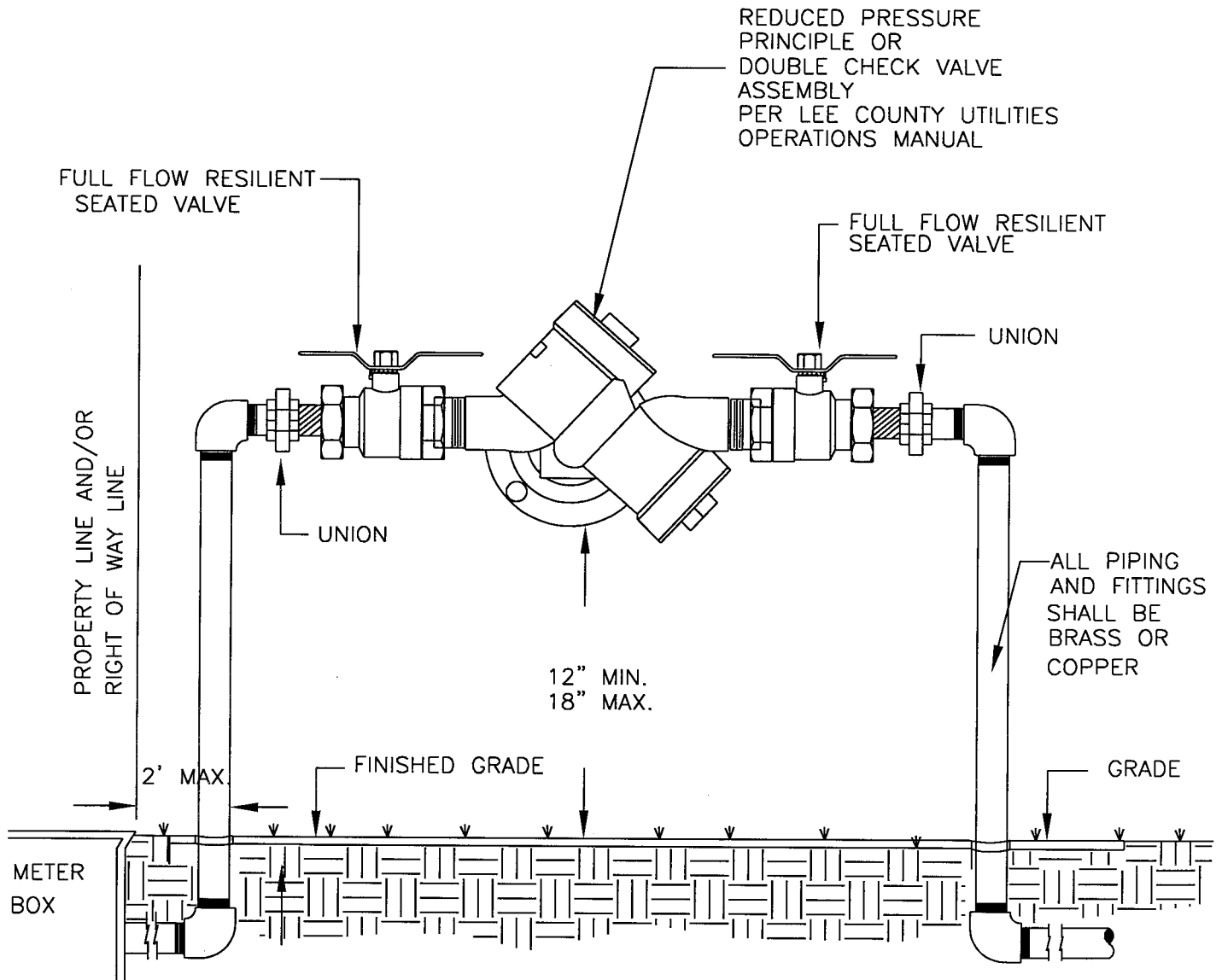


# STANDARD DETAIL NO. 9.11

## LEE COUNTY UTILITIES

### 3/4" TO 2" CROSS CONNECTION CONTROL ASSEMBLY



- NOTES:
1. DIELECTRIC UNIONS REQUIRED
  2. INITIAL AND ANNUAL DEVICE TESTING REQUIRED