



**SECTION III. MONITORING PROGRAM**

<b>A.</b>	Provide a brief statement as to the status of monitoring plan implementation:  There has been no effective change in the Lee County Monitoring Plan.
<b>B.</b>	Provide a brief discussion of the monitoring results to date:  Over the period of the permit, there have been two years of hurricane impact to the system. This appears to have resulted in a system purge of accumulated materials from the soils and MS4 sediments. In the years subsequent to 2004 and 2005, the reaction of the system to rainfall appears to be more delayed than in years prior to the hurricane events.
<b>C.</b>	Attach a monitoring data summary, as required by the permit. <b>Attached.</b>

**SECTION IV. FISCAL ANALYSIS**

<b>A.</b>	Total expenditures for the NPDES stormwater management program for the current reporting year: \$ 297,928
<b>B.</b>	Total budget for the NPDES stormwater management program for the subsequent reporting year: \$ 307,536

**SECTION V. MATERIALS TO BE SUBMITTED WITH THIS ANNUAL REPORT FORM**

Only the following materials are to be submitted to the Department along with this fully completed and signed Annual Report Form (check the appropriate box to indicate whether the item is attached or is not applicable):

<u>Attached</u>	<u>N/A</u>	
<input checked="" type="checkbox"/>	<input type="checkbox"/>	Any additional information required to be submitted in this current annual reporting year in accordance with Part III.A of your permit that is not otherwise included in Section VII below.
<input checked="" type="checkbox"/>	<input type="checkbox"/>	A monitoring data summary as directed in Section III.C above and in accordance with Rule 62-624.600(2)(c), F.A.C.
<input type="checkbox"/>	<input type="checkbox"/>	n/a Year 1 ONLY: An inventory of all known major outfalls and a map depicting the location of the major outfalls (hard copy or CD-ROM) in accordance with Rule 62-624.600(2)(a), F.A.C.
<input type="checkbox"/>	<input type="checkbox"/>	n/a Year 3 ONLY: The estimates of pollutant loadings and event mean concentrations for each major outfall or each major watershed in accordance with Rule 62-624.600(2)(b), F.A.C.
<input type="checkbox"/>	<input type="checkbox"/>	n/a Year 4 ONLY: Permit re-application information in accordance with Rule 62-624.420(2), F.A.C.

**DO NOT SUBMIT ANY OTHER MATERIALS**  
(such as records and logs of activities, monitoring raw data, public outreach materials, etc.)

**SECTION VI. CERTIFICATION STATEMENT AND SIGNATURE**

*The Responsible Authority listed in Section I.F above must sign the following certification statement, as per Rule 62-620.305, F.A.C.:*

I certify under penalty of law that this document and all attachments were prepared under my direction or supervision in accordance with a system designed to assure that qualified personnel properly gathered and evaluated the information submitted. Based upon my inquiry of the person or persons who manage the system, or those persons directly responsible for gathering the information, the information submitted is, to the best of my knowledge and belief, true, accurate and complete. I am aware that there are significant penalties for submitting false information, including the possibility of fine and imprisonment for knowing violations.

Name of Responsible Authority (type or print): Jim Lavender

Title: Public Works Director

Signature: \_\_\_\_\_ Date:  / /

**SECTION VII. STORMWATER MANAGEMENT PROGRAM (SWMP) SUMMARY TABLE**

A.	B.	C.	D.	E.	F.
Permit Citation/S WMP Element	Permit Requirement/Quantifiable SWMP Activity	Number of Activities Performed	Documentation/ Record	Entity Performing the Activity	Comments
Part III.A.1	Structural Controls and Stormwater Collection Systems Operation				
	Maintain an up-to-date inventory of stormwater facilities operated by the permittee. Provide any updates to the inventory in the subsequent ANNUAL REPORT.				
	<b>Dry retention ponds</b>	0		Lee Co DOT, Operations, <a href="mailto:Wsimmons@leegov.com">Wsimmons@leegov.com</a> , (LDOT)	LDOT reports none.
	<b>Wet retention ponds</b>	67	S:\Data\Com\GIS\RetentionPond\GIS_Retention_Pond-PGD.mdb	LDOT	
	<b>Channels/canals (miles)</b>	163	S:\Data\Com\Admin\WCS\KJR\Canal\rawKJCanal.shp	LDOT	
	<b>Ditches/swales (miles)</b>	5,123	GIS\SDE.DOT.Roadcenterline	LDOT	(Road length x 2) – Curb Inv (401)
	<b>Inlets/catch basins/grates</b>	3,471	GIS_drainage_inventory_GIS_drainage_Level_PGD.mdb	LDOT	
	<b>Pollution control structures</b>	6	S:\Data\Com\GIS\drainage_inventory_GIS_Drainage_Level_PG D.mdb	LDOT	3 Captiva Stormceptors, 3 Boca Grande
	<b>Weirs</b>	11	S:\Data\Com\GIS\drainage_inventory_GIS_Drainage_Level_PG D.mdb	LDOT	
	Conduct inspections and maintenance of structural controls and roadway stormwater collection structures in accordance with Table II.A.1.a of the permit. Maintain an internal record keeping system to schedule and document inspections and maintenance activities performed on structural controls and roadway stormwater collection structures operated by the permittee. Report on the inspections and maintenance conducted in each ANNUAL REPORT.				
	<b>Dry retention pond inspections</b>	0			No dry retention ponds
	<b>Dry retention pond maintenance</b>	0			No dry retention ponds

**SECTION VII. STORMWATER MANAGEMENT PROGRAM (SWMP) SUMMARY TABLE**

A.	B.	C.	D.	E.	F.
Permit Citation/S WMP Element	Permit Requirement/Quantifiable SWMP Activity	Number of Activities Performed	Documentation/ Record	Entity Performing the Activity	Comments
	Wet retention pond inspections	67	Division of Mowing Areas Map 3/08-3/09	LDOT	Inspected with roads, mowing route map
	Wet retention pond maintenance	67	Division of Mowing Areas Map 3/08-3/09	LDOT	Maintained with roads, mowing route maps
	Channel/canal inspections (miles)	163	Division of Mowing Areas Map 3/08-3/09	LDOT	
	Channel/canal maintenance (miles/ acres)	70.1 152.4	Production with earned Hours (PEH) Work order Section 50(405,410,415,420,425)	LDOT	Acre to mile assuming 40' standard width = 31.4 mi (101.5 total)
	Ditch/swale inspections (miles)	53,461	PEH Work order Section 17, 30 (122, 179,183)	LDOT	
	Ditch/swale maintenance (miles)	53,461	PEH Work order Section 17, 30 (122, 179,183)	LDOT	
	Inlet/catch basin/grate inspections	3,471	Division of Mowing Areas Map 3/08-3/09	LDOT	
	Inlet/catch basin/grate maintenance	2,043	PEH Work order Section 39,41 (340, 345,300,304,306)	LDOT	
	Pollution control structure inspections	6	Division of Mowing Areas Map 3/08-3/09	LDOT	
	Pollution control structure maintenance	6	Division of Mowing Areas Map 3/08-3/09	LDOT	
	Weir inspections	54	PEH Work order Section 55 (440)	LDOT	
	Weir maintenance	302	PEH Work order Section 55 (444)	LDOT	
	Pipe cleaning/clearing (miles)	9.8	PEH Work order Section 41 (302)	LDOT	
Part III.A.2	Areas of New Development and Significant Redevelopment				
	During Years 1 and 2, conduct a review of the permittee's current local codes and land development regulations to determine where changes can be made to reduce the stormwater impact of new development. In particular, focus on changes to the code that will promote: reductions in impervious surfaces, the use of swales, the incorporation of low impact development principles, stormwater reuse, and adherence to the principles of				

**SECTION VII. STORMWATER MANAGEMENT PROGRAM (SWMP) SUMMARY TABLE**

A.	B.	C.	D.	E.	F.
Permit Citation/S WMP Element	Permit Requirement/Quantifiable SWMP Activity	Number of Activities Performed	Documentation/ Record	Entity Performing the Activity	Comments
	the Florida Yards and Neighborhoods program in new landscaping. Provide a summary of recommended changes to the local codes and regulations with a schedule for implementation in the Year 3 ANNUAL REPORT. <b>(Year 3 Only: Attach summary of recommended changes)</b>				
Part III.A.3	Roadways				
	Continue to implement the litter control programs for public highways and streets, including rights-of-way, employed within the permittee's jurisdictional area and properly dispose of collected material. Report on the litter collection activities, including the frequency of litter collection and an estimate of the quantity of litter collected, in each ANNUAL REPORT.				
	<b>Number of litter collections</b>	257	Adrienne Solomon <a href="mailto:solomoaw@leegov.com">solomoaw@leegov.com</a> "NPDES Yearly Info" e-mail	LDOT, Volunteers	Adopt-A-Road
	<b>Amount of litter collected –bags - tons</b>	1,769 1,187	Adrienne Solomon <a href="mailto:solomoaw@leegov.com">solomoaw@leegov.com</a> "NPDES Yearly Info" e-mail AND PEH Work order Section 14 (114)	LDOT, Volunteers	Bags = Adopt-A-Road Tons = LC
	<b>Total miles of right-of-way maintained</b>	2,827	GIS\SDE.DOT.Roadcenterline	LDOT	
	Continue to implement standard practices employed to reduce the pollutants in stormwater runoff from areas associated with road repair and maintenance, and from permittee-owned or operated equipment yards and maintenance shops that support road maintenance activities.				
	<b>Applicable municipal equipment yards and maintenance shops</b>	1	Year 5 Municipal Maintenance Yard Inspection, S:\NPDES\Facility Sites\Lee County Municipal\Equipment-Maintenance Yards	Division of Natural Resources (DNR), Simmons, <a href="mailto:lsimmons@leegov.com">lsimmons@leegov.com</a> .	LDOT Operations (Lehigh Depot, Utilities Yard now classified as storage Part III.A.5)

**SECTION VII. STORMWATER MANAGEMENT PROGRAM (SWMP) SUMMARY TABLE**

A.	B.	C.	D.	E.	F.
Permit Citation/S WMP Element	Permit Requirement/Quantifiable SWMP Activity	Number of Activities Performed	Documentation/ Record	Entity Performing the Activity	Comments
	<p align="center"><b>Frequency or number of inspections</b></p>	Yearly	Year 5 Municipal Maintenance Yard Inspection	com DNR, Simmons	
	<p>Continue to maintain the Lee County Department of Transportation (LDOT) 24-hour Request for Action (RFA) service for public reporting of roadway and drainage problems.</p>				
	<p><b>Number of Requests for Action (RFAs) reported</b></p>	621	Intranet2/dotrfa/rfa_results.asp	LDOT Operations	Vactor, ditch & canal RFAs
	<p><b>Number of RFAs resolved</b></p>	543	Intranet2/dotrfa/rfa_results.asp	LDOT Operations	
	<p>Continue to actively promote and coordinate, on a regular basis, public participation in the "Keep Lee County Beautiful, Inc." litter control program.</p>				
	<p><b>Amount of litter collected (tons)</b></p>	37	Trish Fancher, <a href="mailto:Klcb32@cs.com">Klcb32@cs.com</a> Program Director "Litter Collection Data" e-mail	Volunteers	
	<p><b>Total miles cleaned (per year)</b></p>	91	Trish Fancher, <a href="mailto:Klcb32@cs.com">Klcb32@cs.com</a> Program Director "Litter Collection Data" e-mail	Volunteers	
Part III.A.4	Flood Control Projects				
	<p>Maintain a list of stormwater capital improvement projects proposed by the Stormwater Management Master Plan. Report on the status of the projects, including a description of the stormwater quality improvement and/or protection measures for each project, in each ANNUAL REPORT. Include only those projects with</p>				

**SECTION VII. STORMWATER MANAGEMENT PROGRAM (SWMP) SUMMARY TABLE**

A.	B.	C.	D.	E.	F.
Permit Citation/S WMP Element	Permit Requirement/Quantifiable SWMP Activity	Number of Activities Performed	Documentation/ Record	Entity Performing the Activity	Comments
	activity during the reporting year. <b>Capital Improvement Projects (CIPs) proposed</b>  <b>CIPs active</b>  <b>CIPs completed</b>  (Attach description of stormwater quality improvements/protection measures for each project)	5  20  22	s:\NPDES\ANNUAL\Annual2, Year 5, 3-08 to 3-09\AR Documents\CIP\CIP Projects YR 08-09.xls  s:\NPDES\ANNUAL\Annual2, Year 5, 3-08 to 3-09\AR Documents\CIP\CIP Projects YR 08-09.xls  s:\NPDES\ANNUAL\Annual2, Year 5, 3-08 to 3-09\AR Documents\CIP\CIP Projects YR 08-09.xls	DNR, Anura Karuna-Muni 239-533-8131 , Wanda Wooten 239-533-8138  Individual Contractors Hired by DNR  Individual Contractors	Attached
Part III.A.5	Municipal Waste Treatment, Storage, and Disposal Facilities Not Covered by an NPDES Stormwater Permit				
	Continue the program to identify priorities and procedures for inspections, and implementation of measures to control discharges from municipal waste treatment, waste storage, and waste disposal facilities, including transfer stations and waste fleet maintenance facilities that are not otherwise covered by an NPDES stormwater permit. The program shall identify priority facilities and shall determine the necessary control measures and procedures to be employed at each facility. Report on the status and findings of the program, including the number and frequency of the inspections conducted, and the identification of the applicable facilities, in each ANNUAL REPORT				

**SECTION VII. STORMWATER MANAGEMENT PROGRAM (SWMP) SUMMARY TABLE**

A.	B.	C.	D.	E.	F.
Permit Citation/S WMP Element	Permit Requirement/Quantifiable SWMP Activity	Number of Activities Performed	Documentation/ Record	Entity Performing the Activity	Comments
	<p><b>Applicable municipal facilities</b></p> <p><b>Number of inspections</b></p> <p><b>Frequency of inspections</b></p>	7	Year 5 Municipal Waste Treatment, Storage and Disposal Facilities, S:\NPDES\Facility Sites\Lee County Municipal\Non-permitted Municipal Storage, Lee County - Annual Insp\Permit 2 Yr 5 Storage Yards	DNR, Simmons	
		7	Year 5 Municipal Waste Treatment, Storage and Disposal Facilities	DNR, Simmons	
		Yearly	Year 5 Municipal Waste Treatment, Storage and Disposal Facilities	DNR, Simmons	
Part III.A.6	Pesticides, Herbicides, and Fertilizer Application				
	<p>Continue to require documentation of proper certification and licensing for all applicators contracted to apply pesticides or herbicides on permittee-owned property, as well as any permittee personnel employed in the application of these products, in accordance with Florida Department of Agriculture regulations.</p> <p><b>Certified/licensed applicators (personnel)</b></p> <p><b>Certified/licensed applicators (contractors)</b></p>				
		14	Adrienne Solomon <a href="mailto:solomoaw@leegov.com">solomoaw@leegov.com</a> e-mail "NPDES Yearly Info" Employee Class History	LDOT	
	<p>Continue to implement a public education program (using such means as the Internet, literature, lectures, special events, notices on Government Access television, radio announcements, utility bill inserts, bulletin board ads, etc) to encourage citizens to reduce their use of pesticides, herbicides, and fertilizers. Continue the distribution of public education materials describing the need to minimize the application of fertilizers, pesticides</p>			Amer-Tech Inc., P&T Lawn & Tractor, Green Heron Landscapes, Landscape Dimensions, Tropic Lawn, Tropic Lawns	Licenses were verified at <a href="http://www.flaes.org">www.flaes.org</a> (FL Dept of Agriculture and Consumer Services website)

**SECTION VII. STORMWATER MANAGEMENT PROGRAM (SWMP) SUMMARY TABLE**

A.	B.	C.	D.	E.	F.
Permit Citation/S WMP Element	Permit Requirement/Quantifiable SWMP Activity	Number of Activities Performed	Documentation/ Record	Entity Performing the Activity	Comments
	<p>and herbicides, and promote actions such as incorporating native vegetation and xeriscape concepts into new landscaping projects. Report on the public education activities that occurred within the permittee's jurisdiction, such as the number of brochures/bill inserts distributed, the number of newspaper articles published, and the number of public presentations conducted, in each ANNUAL REPORT.</p> <p><b>Brochures/Flyers/Fact sheets distributed</b></p> <p><b>Public displays</b></p> <p><b>Special events</b></p> <p><b>Website hits</b></p>	<p>15,867</p> <p>89</p> <p>404</p> <p>19,438</p>	<p>Tom Becker <a href="mailto:tbecker@leegov.com">tbecker@leegov.com</a> "NPDES Annual Report March '08 – March '09"</p> <p>Tom Becker <a href="mailto:tbecker@leegov.com">tbecker@leegov.com</a> "NPDES Annual Report March '08 – March '09"</p> <p>Tom Becker <a href="mailto:tbecker@leegov.com">tbecker@leegov.com</a> "NPDES Annual Report March '08 – March '09"</p> <p>Tom Becker <a href="mailto:tbecker@leegov.com">tbecker@leegov.com</a> "NPDES Annual Report March '08 – March '09"</p>	<p>Florida Yards and Neighbors, Tom Becker, <a href="mailto:tbecker@leegov.com">tbecker@leegov.com</a> (FY&amp;N)</p> <p>FY&amp;N</p> <p>FY&amp;N</p> <p>FY&amp;N</p>	
	<p>Continue to conduct annual seminars, training sessions, and/or on-the-job supervision for municipal applicators to emphasize the stormwater implications of pesticides and herbicide application. Report on the training activities, including the number of training sessions conducted and the number of municipal applicators trained, in each ANNUAL REPORT.</p> <p><b>Training sessions conducted</b></p> <p><b>Municipal applicators trained</b></p>	<p>8</p> <p>8</p>	<p>Adrienne Solomon <a href="mailto:solomoaw@leegov.com">solomoaw@leegov.com</a> "NPDES Yearly Info", Employee Class History</p> <p>Adrienne Solomon <a href="mailto:solomoaw@leegov.com">solomoaw@leegov.com</a> "NPDES Yearly Info", Employee Class History</p>	<p>LDOT</p> <p>LDOT</p>	
Part	Illicit Discharges and Improper Disposal — Inspections, Ordinances, and Enforcement Measures				

**SECTION VII. STORMWATER MANAGEMENT PROGRAM (SWMP) SUMMARY TABLE**

A.	B.	C.	D.	E.	F.
Permit Citation/S WMP Element	Permit Requirement/Quantifiable SWMP Activity	Number of Activities Performed	Documentation/ Record	Entity Performing the Activity	Comments
III.A.7.a	<b>No Reportable Items</b>				
Part III.A.7.c	Illicit Discharges and Improper Disposal — Investigation of Suspected Illicit Discharges and/or Improper Disposal				
	<p>Continue to implement the standard investigative procedures (including pro-active inspections) to identify and terminate the source(s) of illicit connections or discharges to the MS4. Based upon reports received from personnel or citizens, investigate suspected illicit discharges. Maintain an internal log documenting the reports of suspected illicit discharges, investigations performed, and enforcement actions taken. Report on the program, including the number and the results of the investigations and enforcement actions conducted, in each ANNUAL REPORT.</p> <p><b>Pro-active inspections of suspected illicit connections/discharges/dumping</b></p> <p><b>Investigations of reports of suspected illicit connections/discharges/dumping</b></p> <p><b>Illicit connections/discharges/dumping found</b></p> <p><b>Citations (warnings) issued</b></p> <p><b>Tickets (fines) issued</b></p> <p>Continue to implement a periodic training course to</p>				
	<b>Pro-active inspections of suspected illicit connections/discharges/dumping</b>	57	S:\NPDES\Facility Sites\Fac_Insp.MDB	DNR, Simmons, Aliucci	Two warning citations issued: 000320, 000350
	<b>Investigations of reports of suspected illicit connections/discharges/dumping</b>	42	Intranet2/dotrfa/rfa_results.asp	DNR, Simmons, Aliucci	
	<b>Illicit connections/discharges/dumping found</b>	35	Intranet2/dotrfa/rfa_results.asp	DNR, Simmons, Aliucci	
	<b>Citations (warnings) issued</b>	3	Intranet2/dotrfa/rfa_results.asp	DNR, Simmons, Aliucci	Including 2 from Proactive, Citations 000236, 000320, 000350
	<b>Tickets (fines) issued</b>	2	Intranet2/dotrfa/rfa_results.asp	DNR, Simmons, Aliucci	Citations 000326, 000333
	Continue to implement a periodic training course to				

**SECTION VII. STORMWATER MANAGEMENT PROGRAM (SWMP) SUMMARY TABLE**

A.	B.	C.	D.	E.	F.
Permit Citation/S WMP Element	Permit Requirement/Quantifiable SWMP Activity	Number of Activities Performed	Documentation/ Record	Entity Performing the Activity	Comments
	educate appropriate permittee personnel to identify and report conditions in the stormwater facilities that may indicate the presence of illicit discharges to the MS4. Report on the training activities, including the number of training courses conducted and the number of personnel trained, in each ANNUAL REPORT. <b>Training sessions conducted</b>  <b>Personnel trained</b>	  5  30	  Illicit Discharge Identification Class Sign-In Sheets  Illicit Discharge Identification Class Sign-In Sheets	  DNR, Pellicer, Simmons, Aliucci  DNR, Pellicer, Simmons, Aliucci	
Part III.A.7.d	Illicit Discharges and Improper Disposal — Spill Prevention and Response				
	Continue to implement the spill-prevention/spill-response plan and procedures to prevent, contain, and respond to spills that may discharge into the MS4. Ensure that spills, regardless of whether they are hazardous, are properly addressed. Report on the spill prevention and response activities, including the number of spills addressed, in each ANNUAL REPORT. <b>Hazardous and non-hazardous material spills responded to</b>  <b>Citations (warnings) issued</b> <b>Tickets (fines) issued</b> <b>Enforcement referrals to DEP/agency</b>  Provide periodic training courses on proper spill prevention,	  137  0  0  11	  Unincorporated Lee County Fire Departments, Lee County Emergency Management, Port Authority emails/Faxes— (Compiled in S/NPDES\ANNUAL\Annual2, Year 5, 3-08 to 3-09\AR Documents\Fireaddress yr 08-09.xls)  Unincorporated Lee County Fire Departments, Lee County Emergency Management, Port Authority emails/Faxes— (Compiled in S/NPDES\ANNUAL\Annual2, Year 5, 3-08 to 3-09\AR Documents\Fireaddress yr 08-09.xls)	  Individual Local Fire Departments and County  Individual Local Fire Departments and County	

**SECTION VII. STORMWATER MANAGEMENT PROGRAM (SWMP) SUMMARY TABLE**

A.	B.	C.	D.	E.	F.
Permit Citation/S WMP Element	Permit Requirement/Quantifiable SWMP Activity	Number of Activities Performed	Documentation/ Record	Entity Performing the Activity	Comments
	containment, and response techniques and procedures for appropriate permittee personnel. Report on the training activities completed, including the number of training courses provided and the number of personnel trained, in each ANNUAL REPORT. <b>Training courses provided</b>  <b>Personnel trained</b>	  2  44	  Sign-in Sheets, All-Pro Occupational Trainers, 813-662-0986  Sign-in Sheets, All-Pro Occupational Trainers, 813-662-0986	  Dan Buechner, All-Pro Occupational Trainers  Dan Buechner, All-Pro Occupational Trainers	  40-hour class and 8-hour refresher  
Part III.A.7.e	Illicit Discharges and Improper Disposal — Public Reporting				
	Continue to maintain a complaint log documenting all reports of illicit discharges and improper disposal and the actions taken to investigate and resolve the problem in the permittee's jurisdictional area. Report the number and type of complaints received and the results of the investigations (i.e., whether an illicit discharge was found and subsequently eliminated) in each ANNUAL REPORT. <b>Citizen reports of suspected illicit connections/discharges/dumping received</b> <b>Illicit connections/discharges/dumping found</b> <b>Illicit connections/discharges/dumping</b>	  31  24  24	  Intranet2/dotrfa/rfa_results.asp  Intranet2/dotrfa/rfa_results.asp  Intranet2/dotrfa/rfa_results.asp	  DNR, Simmons, Aliucci  DNR, Simmons, Aliucci  DNR, Simmons, Aliucci	    

**SECTION VII. STORMWATER MANAGEMENT PROGRAM (SWMP) SUMMARY TABLE**

A.	B.	C.	D.	E.	F.
Permit Citation/S WMP Element	Permit Requirement/Quantifiable SWMP Activity	Number of Activities Performed	Documentation/ Record	Entity Performing the Activity	Comments
	<p style="text-align: center;"><b>ing eliminated</b></p> <p>Continue to promote, publicize, and facilitate public reporting of the presence of illicit discharges and improper disposal of materials into the MS4. Continue to maintain a dedicated phone line for reporting of suspected illicit discharges and improper disposal. The permittee shall publicize the existence of this number on a routine basis and shall include information on the problems associated with illicit discharges and improper disposal, how to identify them, and how to report incidents found. Report on the public outreach activities conducted in each ANNUAL REPORT.</p> <p><b>Brochures/Flyers/Fact sheets/ rain gauges distributed</b></p> <p><b>Public displays</b></p> <p><b>Seminars/Workshops</b></p> <p><b>Special events</b></p> <p><b>Website hits</b></p>	<p></p> <p>640</p> <p>10</p> <p>0</p> <p>4</p> <p>0</p>	<p></p> <p>NPDES Calendar Notes</p> <p>NPDES Calendar Notes</p> <p></p> <p>Jayne Coles, <a href="mailto:jcoles@leegov.com">Jcoles@leegov.com</a> Pollution Prevention Program (P2), e-mail "Earth Week"</p> <p>Website Counter <a href="http://www.lee-county.com/NPDES">www.lee-county.com/NPDES</a></p>	<p></p> <p>DNR, Pellicer, Simmons, Aliucci</p> <p>DNR, Pellicer, Simmons, Aliucci</p> <p></p> <p>Jayne Coles, P2, 239-652-6126</p> <p>DNR</p>	<p></p> <p>Lee County Fair Booth 2-27-09 thru 3-8-09</p> <p>Lee County Fair Booth 2-27-09 thru 3-8-09</p> <p></p> <p>Trafalgar Middle, Hancock Elementary, Challenger Middle, Cafferate Elementary</p> <p>Website undergoing revision</p>
Part III.A.7.f	Illicit Discharges and Improper Disposal — Oils, Toxics, and Household Hazardous Waste Control				
	Continue implementation of the outreach program to instruct the public on responsible environmental management and the proper disposal of used motor oil, leftover hazardous household products, and lead acid batteries. The outreach program could include an activity such as the				

**SECTION VII. STORMWATER MANAGEMENT PROGRAM (SWMP) SUMMARY TABLE**

A.	B.	C.	D.	E.	F.
Permit Citation/S WMP Element	Permit Requirement/Quantifiable SWMP Activity	Number of Activities Performed	Documentation/ Record	Entity Performing the Activity	Comments
	stenciling/marketing of municipally-owned storm sewer inlets, and providing information through the Internet, utility bill inserts, brochures, flyers, PSAs, presentations, etc. Continue to support and publicize Household Hazardous Waste Collection Days and Conditionally Exempt Business Collection Days to facilitate proper disposal of oil, toxics, and household hazardous materials. Lee County shall provide the other permittees with adequate advance notification of these planned events. Report on the public outreach activities conducted in each ANNUAL REPORT				
	<b>Brochures/Flyers/Fact sheets distributed</b>	28,155	Solid Waste Billing invoices (Fiscal, Rosi 533-8541); Bridgette Kantor, 338-3302, e-mail "RE: Hazardous Waste education/NPDES Yr 5 Annual report Part III.A.7.f"; Jayne Coles P2 e-mail "Fair Info" with attachment 2009.xls	P2, LC Solid Waste	
	<b>Direct mailings</b>	155,000	Gulf Coast Printing Invoice 9/3/08; LC Fiscal, Rosi 533-8541	LC Solid Waste	Calendars
	<b>Newspaper and newsletter articles/notices</b>	54	News-Press, Florida Weekly, Southwest Florida Business and Breeze Newspapers Invoices (Fiscal, Rosi 533-8541)	LC Solid Waste	Circulation not tallied
	<b>Newsletters distributed</b>	0			P2 Program discontinued newsletter because of budget constraints
	<b>Number of Household Hazardous Waste Collection Day events</b>	259	Brigitte Kantor kantorbx@leegov.com "Hazardous Waste education/NPDES Yr 5 Annual report Part III.A.7.f" e-mail	Lee County Solid Waste	Days open in permanent facility. Mon – Fri and every first Sat. of the month
	<b>Public displays</b>	10	P2 Jayne Coles <a href="mailto:jcoles@leegov.com">jcoles@leegov.com</a> - NPDES Calendar	Lee County Pollution Prevention, Jayne Coles, <a href="mailto:jcoles@leegov.com">jcoles@leegov.com</a>	Lee County Fair for 10 Days
	<b>Radio or television Public Service Announcements (PSAs)</b>	0		Lee County Solid Waste	No radio announcements were reported
	<b>Special events</b>	2	Solid Waste Billing, Fiscal, Rosi 533-8541	Lee County Solid	C&D Recycling Workshops

**SECTION VII. STORMWATER MANAGEMENT PROGRAM (SWMP) SUMMARY TABLE**

A.	B.	C.	D.	E.	F.
Permit Citation/S WMP Element	Permit Requirement/Quantifiable SWMP Activity	Number of Activities Performed	Documentation/ Record	Entity Performing the Activity	Comments
	<b>Storm sewer inlets marked</b>	0		Waste,	3/19/08 & 5/28/08
Part III.A.7.g	Illicit Discharges and Improper Disposal — Limitation of Sanitary Sewer Seepage				
	Continue to implement procedures to reduce or eliminate discharges to the MS4 from sanitary sewer seepage and sanitary sewer overflows (SSOs). Report on the activities to reduce or eliminate seepage and SSOs, such as number of incidents discovered and resolved, in each ANNUAL REPORT.				
	<b>Sanitary sewer seepage incidents discovered</b>	0			
	<b>Sanitary sewer seepage incidents resolved</b>	0			
	<b>Sanitary sewer overflows (SSOs) discovered</b>	30	North Fort Myers Utilities, Abnormal Event Reports, Troy Kepley 239-340-3737 tkepley@woodardcurran.com ; Lee County Utilities Abnormal Event Report, Michael Currier, mcurrier@leegov.com	North Ft Myers Utilities, LC Utilities	
Part III.A.8.a	Industrial and High-Risk Runoff — Identification of Priorities and Procedures for Inspections				
	Continue to maintain an up-to-date inventory of all existing high risk facilities discharging into the permittee's MS4. The inventory shall identify the outfall and surface waterbody into which each high risk facility discharges.				
	<b>Total high risk facilities</b>	13	S:\NPDES\Facility Sites	DNR, Simmons, Aliucci	Includes WWTF (will remove next permit)
	<b>New high risk facilities</b>	2	S:\NPDES\Facility Sites	DNR, Simmons	U Pull & Save, Waste Services Inc
	Continue the inspection program procedures for high risk facilities, according to the priority and established inspection schedules, to determine				

**SECTION VII. STORMWATER MANAGEMENT PROGRAM (SWMP) SUMMARY TABLE**

A.	B.	C.	D.	E.	F.
Permit Citation/S WMP Element	Permit Requirement/Quantifiable SWMP Activity	Number of Activities Performed	Documentation/ Record	Entity Performing the Activity	Comments
	compliance with all appropriate aspects of the stormwater program (e.g., no illicit connections and compliance with local stormwater regulation requirements). Maintain a log documenting the inspections performed and enforcement actions taken. Report on the inspection program, including the number and results of inspections conducted and enforcement actions taken, in each ANNUAL REPORT. <b>High risk facility inspections</b>  <b>Citations (warnings) issued</b> <b>Tickets (fines) issued</b>	          13  0  0	          S:\NPDES\Facility Sites          	          DNR, Simmons, Aliucci          	          
Part III.A.8.b	Industrial and High-Risk Runoff — Monitoring for High Risk Industries				
	Monitoring may be required on an as-needed basis in the event that inspections of high-risk facilities disclose suspected illicit discharges to the MS4. New high-risk industrial facilities as defined in 40 CFR 122.26(d)(2)(iv)(C) must be evaluated to determine if the new discharge is contributing a substantial pollutant load to the MS4. The evaluation may include site-specific monitoring. <b>New high risk facilities evaluated</b> <b>High risk facilities monitored</b>	          2  0	          S:\NPDES\Facility Sites          	          DNR, Simmons          	          U Pull & Save, Waste Services Inc          
Part III.A.9.a	Construction Site Runoff — Site Planning and Non-Structural and Structural Best Management Practices				
	Continue to implement the local codes or land development regulations that require construction site planning				

**SECTION VII. STORMWATER MANAGEMENT PROGRAM (SWMP) SUMMARY TABLE**

A.	B.	C.	D.	E.	F.
Permit Citation/S WMP Element	Permit Requirement/Quantifiable SWMP Activity	Number of Activities Performed	Documentation/ Record	Entity Performing the Activity	Comments
	approval and structural and non-structural erosion and sediment controls during construction to reduce the discharge of pollutants to the MS4. <b>Construction site plan reviews (private and municipal sites)</b>	118	Lee County Development Review Services Report, Development Orders and Limited Review Development Orders	DNR, Simmons, Aliucci	
Part III.A.9.b	Construction Site Runoff — Inspection and Enforcement				
	Continue to implement the inspection program for construction projects to ensure compliance with local stormwater requirements and the permittee’s development requirements concerning erosion and sediment control. Maintain enforcement of inspection program by issuing a violation notice and/or a stop work order to those construction site operators that repeatedly do not maintain compliance with the approved erosion and sediment control BMPs and permit conditions. Maintain an internal log documenting the inspections performed and any enforcement actions taken. Report on the inspection program, including the number of construction inspections conducted and the number and type of enforcement actions taken, in each ANNUAL REPORT. <b>Construction site inspections (private and municipal sites) Citations (warnings) issued</b>  <b>Stop Work Orders issued Tickets (fines) issued</b>	3176	Access Query “All Const Inspections Year 5”	DNR, Simmons, Aliucci	
		24	Insp map editing.mxd	DNR, Simmons, Aliucci	
		1	Access Constinspdata.mdb	DNR, Simmons	Three Oaks Pkwy Ext
		16	Insp map editing.mxd	DNR, Simmons, Aliucci	



**SECTION VII. STORMWATER MANAGEMENT PROGRAM (SWMP) SUMMARY TABLE**

A.	B.	C.	D.	E.	F.
Permit Citation/SWMP Element	Permit Requirement/Quantifiable SWMP Activity	Number of Activities Performed	Documentation/Record	Entity Performing the Activity	Comments
	Department's NPDES generic permit for stormwater discharge from construction activities (Rule 62-621.300(4), F.A.C.). <b>Number of development orders applicants notified</b>	118	Lee County Development Review Services Report, Development Orders and Limited Review Development Orders	Lee County Development Services	
	Provide a description of the notification procedures for building permit applicants required above, and include any supporting materials, in the Year 1 ANNUAL REPORT. <b>(Year 1 Only: Attach description of procedures and supporting material)</b>				

**SECTION VIII. CHANGES TO THE STORMWATER MANAGEMENT PROGRAM (SWMP) ACTIVITIES (Not Applicable In Year 4)**

A.	Permit Citation/SWMP Element	Proposed Changes to the Stormwater Management Program Activities Established as Specific Requirements Under Part III.A of the Permit (Including the Rationale for the Change) — REQUIRES DEP APPROVAL PRIOR TO CHANGE IF PROPOSING TO REPLACE OR DELETE AN ACTIVITY.
B.	Permit Citation/SWMP Element	Changes to the Stormwater Management Program Activities NOT Established as Specific Requirements Under Part III.A of the Permit (Including the Rationale for the Change)

# **ATTACHMENTS**

## **TABLE OF CONTENTS**

Water Quality and Monitoring Data Summary	Page 1
Capital Improvement Project Status	Page 4

# **Monitoring Data Summary**

## **Water Quality Assessment**

**for**

**Lee County NPDES Permit FLS000035**

**Permit Year 5**

**2008-09**

.

The scope of this discussion is a brief synopsis not a thorough assessment of all the extremely complex and diverse factors with potential to impact water quality in Lee County. However, the two universally recognized influential water quality factors are: 1. Land disturbance due to construction and; 2. Weather. The following analysis focuses on these two components and provides an assessment of their impact on the water quality related to the MS4.

The reporting year affords an opportunity to continue assessment of the impact of land disturbance associated with construction activity on Water Quality. For the past two years, activity in Lee County has been influenced by both national and local market trends. For all intents, the market has been saturated with new units. This has taken away the need for additional units, thus new construction has stopped in place, with partially complete (houses, parcels and infrastructure). This report attempts to capture the associated impact on water quality.

In an attempt to assess the impact of weather on the WQI, annual rainfall was compared with the WQI. There was no easily identified correlation at the quarterly scale. However, in evaluating the WQI over the permit period, there appears to be a relative reduction during the last permit year (08-09) and a downward trend over the permit.

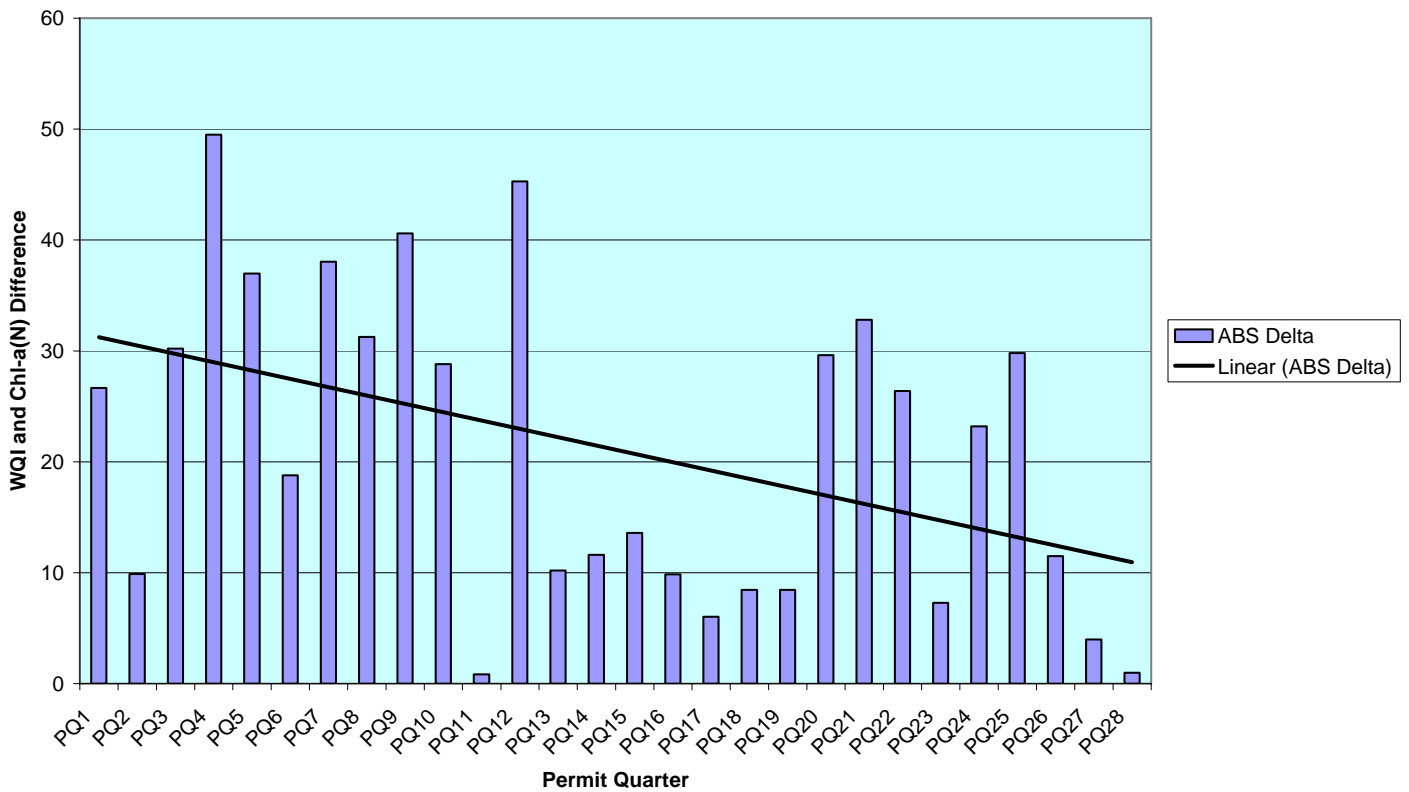
To further assess water quality, one may look at the Chlorophyll (normalized over Lee County data) for the period of the permit. By normalizing the chlorophyll data over the period of record for the MS4, one may graphically assess both temporal Chlorophyll and WQI changes in the system. Both the WQI and the Chlorophyll are either linked to water quality or are considered direct indicators of system health. However, Chlorophyll is a biological response to nutrients and clarity of the water column. Perhaps, one may be able to develop a predictable relationship between the WQI and the normalized Chlorophyll-a. Unfortunately, this is speculative, in that the nutrients become incorporated into the cellular structure of biological flora and may appear reduced skewing the relationship. By comparing the differences between WQI and Chl-a(N) over time, a measure of system response can only be estimated.

Even without a formal relationship between the WQI and Chl-a(N), it is apparent in both Table I and Table II there has been a decline in the WQI or improvement in water quality over the last two years of the permit.

The weather issue becomes manifested in the form of the same comparison over the two major hurricane years (2004 and 2005) as both the difference in WQI and Chl-a(N) as well as the WQI are markedly lower during the same years. This may be attributable to high volume, short duration flushing of the system related to the two events.

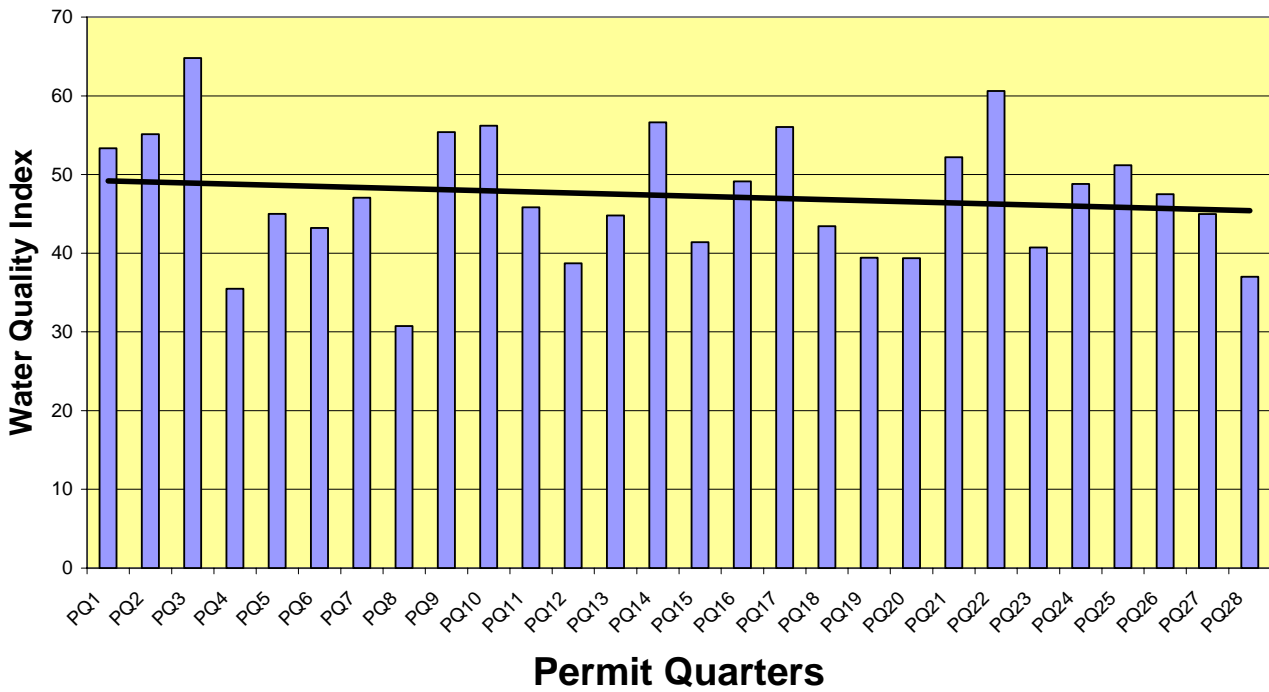
**Table I**  
 Lee County Normalized Chlorophyll and WQI Difference  
 Over the permit period by quarter

The Absolute Value of the Difference in  
 WQI and County Normalized Chlorophyll (Chl-a (N))



**Table II**  
 Lee County WQI  
 October 2001 through March 2009

Lee County Water Quality Index  
 10-2001 thru 3-2009



## Capital Improvement Projects: Permit 2 Year 5

Capital Improvement Projects: Permit 2 Year 5		
March 2008 - March 2009		
<b>Project Name</b>	<b>Status</b>	<b>Improvement/Protection</b>
Eagle Ridge/Legend Interconnect	proposed	FP
Gator Slough Channel Restoration	active	WQ, FP
Briarcliff/Fiddlestck water quality improvement	active	OM, CS
Yellow Fever Creek/Gator Slough Transfer Facility	active	FP
<b>NIP (Neighborhood Improvement Projects)</b>		
N. Staley Rd. Ditch Cleaning	completed	CS, OM
Barholomew Rd. Ditch Maintenance	completed	CS, OM
Arbor Ridge Drainage Improvements	completed	FP
<b>Major Maintenance Projects (Clean and Snag)</b>		
Bedman Creek	completed	CS, OM
Yellow Fever Creek	completed	CS, OM
Powell Creek Preserve	completed	CS, OM
Popash Creek	completed	CS, OM
Spanish Creek	completed	CS, OM
Powell Creek Maintenance	completed	WQ
Whiskey Creek	completed	CS, OM
Owl Creek	completed	CS, OM
Ten Mile Canal	completed	CS, OM
Billy's Creek	completed	CS, OM
Palm Creek	completed	CS, OM
Estero River	completed	CS, OM
Mud Creek	completed	CS, OM
Fichter Creek Restoration	active	WQ, FP
Halfway Creek Filter Marsh and Weir US 41	active	WQ, FP
Matlacha Pass Restoration	active	WQ, CS, FP
Spanish Creek Restoration	active	WQ, FP
Lakes Park Water Quality Project	active	WQ, FM
Flood Insurance Study	completed	FM
North Lee County Hydrologic Restoration	active	WQ, CS
Water table monitoring network	completed	FM
Cohn Brance Improvements	active	CS
BMP efficiency determination study	active	FM
Powell Creek Hydrologic restoration (sedimentation in the nat	active	WQ, FP
North Fort Myers & Charlotte County Aerial Contour Mapping	completed	FM
Poling Lane Drainage	active	FP
East Mullock Drainage District Weir replacement and WQ improvement	active	WQ, FP
Kehl Canal Weir Modification	proposed	FP
Popash Creek Preserve - hydroestoration and enhancement of 20/20 land	active	WQ
Popash Creek Culvert Repacement at Pine Echo road	completed	FP
Ten Mile Canal/Hanson BMP installation	active	FP, WQ
Water Quality Improvement request by Conservancy	active	WQ, FM
North Lee County Surface water management study	active	FM
SFWMD grant projects	completed	OM
East Mullock Drainage District Facility analysis	completed	FM
Ten Mile Canal Filter Marsh	active	WQ
Gator Slough Channel Improvements - Powell Creek extension flowway restoration	active	FP
Ten Mile Canal Pump Facility	proposed	WQ, FP
Sunniland/9 mile run drainage	proposed	FP
Stroud Creek Restoration	proposed	WQ, FP

### Projects

Proposed

5

	<b>Projects</b>	
Proposed		5
Active		20
Completed		22

Key:

**WQ:** Water Quality Improvements, retention, bioenhancements, habitat restoration

**FP:** Flood prevention, flowway restoration, hydrolic improvements

**OM:** On-going maintenance, removing sediments and excess plant materials

**CS:** Cleaning and Snagging, removing excess sediments and trash, exotic plants

**FM:** Funding mechanism, planning tools, site monitoring