

FOR IMMEDIATE RELEASE

Contact: Betsy Clayton, APR/CPRC
Communications Director
Lee County Government
239-826-4606
bclayton@leegov.com

Lee County Community Development plans Page Park visioning workshop

Fort Myers, FL, April 5, 2019 – Lee County Department of Community Development staff will hold a visioning workshop for stakeholders, residents and businesses of Page Park, a community located south of Page Field in Lee County, from 10 a.m. to noon Saturday, April 27. The visioning workshop will be held at the Evangelical Christian School, 8237 Beacon Blvd., Fort Myers, FL 33907.

The visioning workshop is to define and update the community planning goals for Page Park within the Lee Plan. Lee County Community Development staff will begin by providing an overview of basic background information relevant to the Lee Plan, the community plans and the visioning event. After the short informational segment, guided group discussions will help to identify future opportunities and constraints within the Page Park community. Interested individuals are encouraged to arrive at 10 a.m. and stay until the workshop concludes.

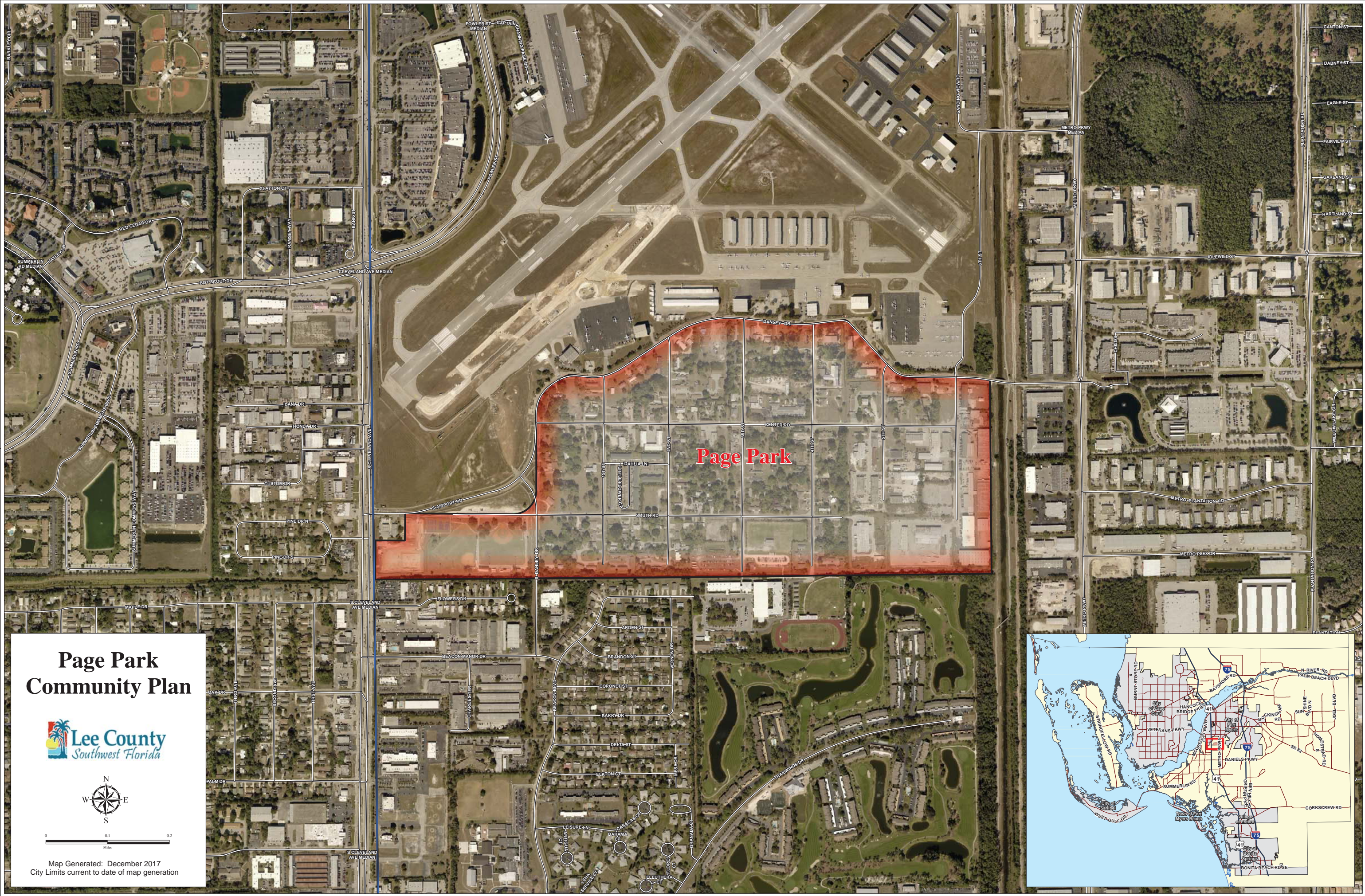
A community plan is a goal in the Lee Plan specific to a defined area of the county where long-term objectives of the community, and policies to meet these objectives, are identified. There are 17 distinct community planning areas identified in the Lee Plan.

The Lee Plan requires certain day-to-day public and private activities within each jurisdiction and must be consistent with the goals, objectives and policies in the adopted plan. It is a source of authority for the local government's land development regulations and for an array of official discretionary actions including, but not limited to, the capital improvement program. The Lee Plan represents the community's vision of what it will or should look like by the end of the planning horizon.

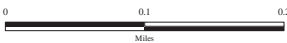
The purpose of community plans is to address specific conditions unique to a defined area of the county. Conditions may be physical, historical, environmental or economic in nature. All amendments will move through the normal process required to amend the Lee Plan with opportunities for public input – one hearing with the Local Planning Agency and two hearings with the Board of County Commissioners (transmittal and adoption).

For more information, visit the website at <http://www.leegov.com/dcd/planning/cp/pagepark> or contact PODPlanning@leegov.com.

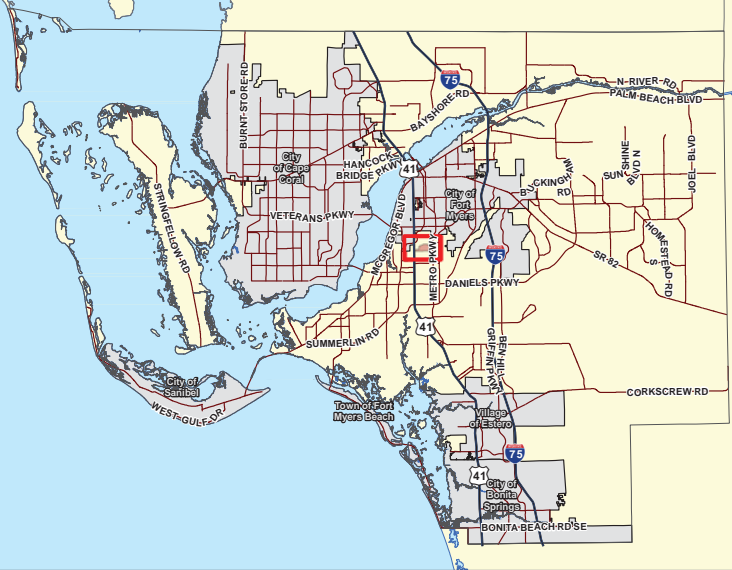
In accordance with the Americans with Disabilities Act, Lee County will not discriminate against qualified individuals with disabilities in its services, programs, or activities. To request an auxiliary aid or service for effective communication or a reasonable modification to participate in this meeting, contact David Wagley, 239-533-8502, Florida Relay Service 711, or DWagley@leegov.com. Accommodation will be provided at no cost to the requestor. Requests should be made at least five business days in advance.



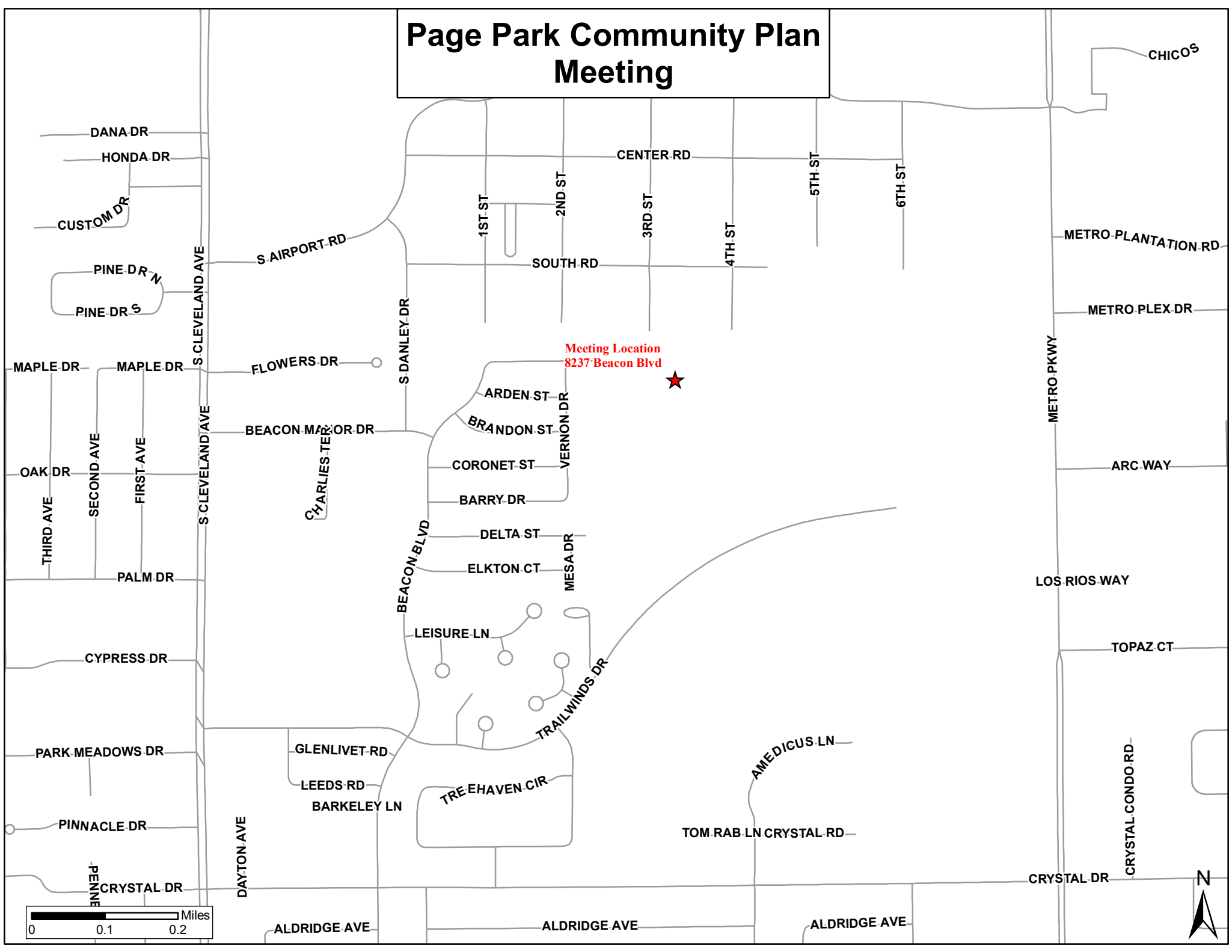
Page Park Community Plan



Map Generated: December 2017
City Limits current to date of map generation



Page Park Community Plan Meeting



Meeting Location
8237 Beacon Blvd



DANA DR
HONDA DR
CUSTOM DR

PINE DR N
PINE DR S

MAPLE DR
OAK DR
THIRD AVE
SECOND AVE
FIRST AVE
PALM DR

CYPRESS DR
PARK MEADOWS DR
PINNACLE DR
PENNE
CRYSTAL DR

S AIRPORT RD
S DANLEY DR
FLOWERS DR

BEACON MAJOR DR
CHARLIE TER

GLENLIVET RD
LEEDS RD
BARKELEY LN

ALDRIDGE AVE

1ST ST

2ND ST

3RD ST

4TH ST

5TH ST

6TH ST

CENTER RD

SOUTH RD

ARDEN ST

BRANDON ST

CORONET ST

BARRY DR

DELTA ST

ELKTON CT

LEISURE LN

TRAILWINDS DR

TREEHAVEN CIR

VERNON DR

MESA DR

TOM RAB LN

AMEDICUS LN

ALDRIDGE AVE

CRYSTAL DR

CRYSTAL CONDO RD

LOS RIOS WAY

ARC WAY

METRO PLEX DR

METRO PLANTATION RD

CHICOS

