

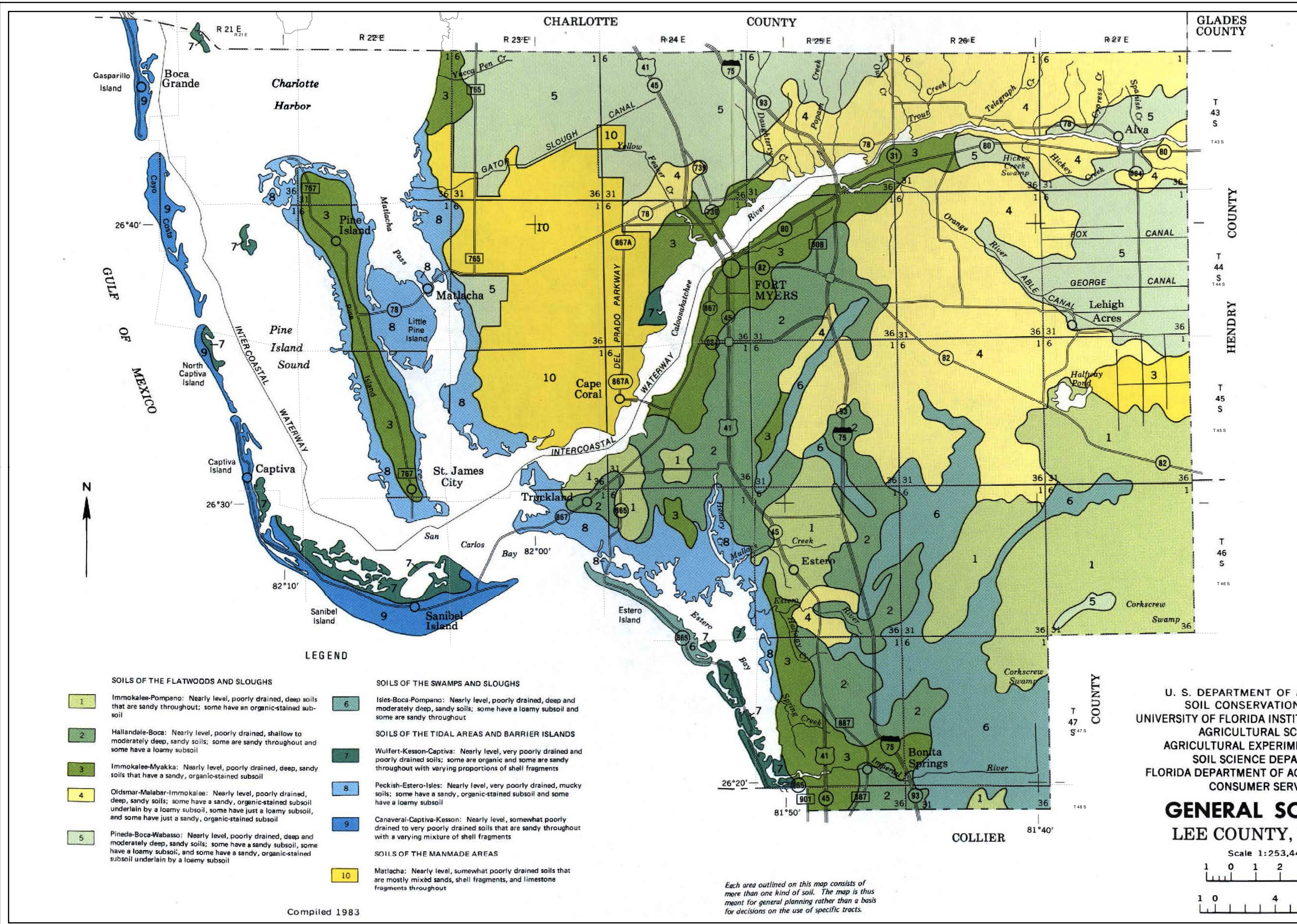
GENERAL SOILS MAP

Lee Plan Map 10



Map Generated: September 2016

Adopted By: ORD 90-43 & 90-44

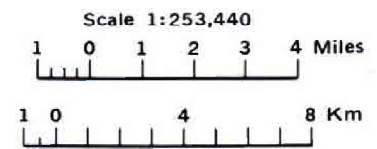


LEGEND

- | | |
|--|---|
| <p>SOILS OF THE FLATWOODS AND SLOUGHS</p> <ul style="list-style-type: none"> 1 Immokalee-Pompano: Nearly level, poorly drained, deep soils that are sandy throughout; some have an organic-stained subsoil 2 Hallandale-Boca: Nearly level, poorly drained, shallow to moderately deep, sandy soils; some are sandy throughout and some have a loamy subsoil 3 Immokalee-Myakka: Nearly level, poorly drained, deep, sandy soils that have a sandy, organic-stained subsoil 4 Oldsmar-Malabar-Immokalee: Nearly level, poorly drained, deep, sandy soils; some have a sandy, organic-stained subsoil underlain by a loamy subsoil, some have just a loamy subsoil, and some have just a sandy, organic-stained subsoil 5 Pineda-Boca-Wabasso: Nearly level, poorly drained, deep and moderately deep, sandy soils; some have a sandy subsoil, some have a loamy subsoil, and some have a sandy, organic-stained subsoil underlain by a loamy subsoil | <p>SOILS OF THE SWAMPS AND SLOUGHS</p> <ul style="list-style-type: none"> 6 Isles-Boca-Pompano: Nearly level, poorly drained, deep and moderately deep, sandy soils; some have a loamy subsoil and some are sandy throughout <p>SOILS OF THE TIDAL AREAS AND BARRIER ISLANDS</p> <ul style="list-style-type: none"> 7 Wulfert-Kesson-Captiva: Nearly level, very poorly drained and poorly drained soils; some are organic and some are sandy throughout with varying proportions of shell fragments 8 Peckish-Estero-Isles: Nearly level, very poorly drained, mucky soils; some have a sandy, organic-stained subsoil and some have a loamy subsoil 9 Canaveral-Captiva-Kesson: Nearly level, somewhat poorly drained to very poorly drained soils that are sandy throughout with a varying mixture of shell fragments <p>SOILS OF THE MANMADE AREAS</p> <ul style="list-style-type: none"> 10 Matlacha: Nearly level, somewhat poorly drained soils that are mostly mixed sands, shell fragments, and limestone fragments throughout |
|--|---|

U. S. DEPARTMENT OF AGRICULTURE
SOIL CONSERVATION SERVICE
UNIVERSITY OF FLORIDA INSTITUTE OF FOOD AND AGRICULTURAL SCIENCES
AGRICULTURAL EXPERIMENT STATIONS
SOIL SCIENCE DEPARTMENT
FLORIDA DEPARTMENT OF AGRICULTURE AND CONSUMER SERVICES

GENERAL SOIL MAP LEE COUNTY, FLORIDA



Each area outlined on this map consists of more than one kind of soil. The map is thus meant for general planning rather than a basis for decisions on the use of specific tracts.