

EVACUATION ZONE

VS

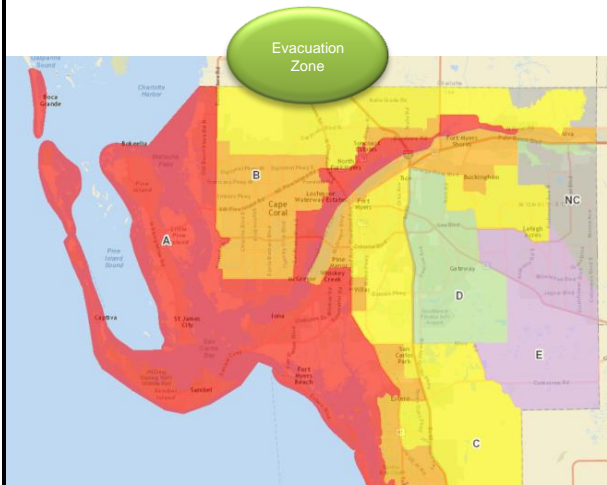
FLOOD ZONE

find my
evacuation
zone app



<http://leegis.leegov.com/evacuationzones>

- Evacuation/surge zones are areas that may be inundated by storm surge or isolated by storm surge waters.
- There are five zones, ranked by the risk of storm surge impact (A, B, C, D & E).
- Zone A being the most likely to flood and to be evacuated first.

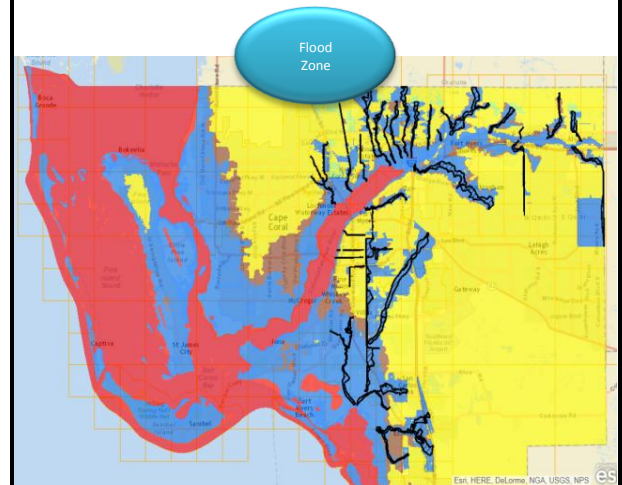


find my
flood
zone app



<http://leegis.leegov.com/floodzone>

- FEMA creates Flood Insurance Rate Maps (FIRMs) to determine flood insurance rates and building code requirements.
- The flood maps define/outline the flood zones and their boundaries.
- By law, all homes in VE, AE, A, or AH flood zones carrying mortgage must be covered by flood insurance.



Tip: within each app, click on the help icon at the top right corner for details and assistance.