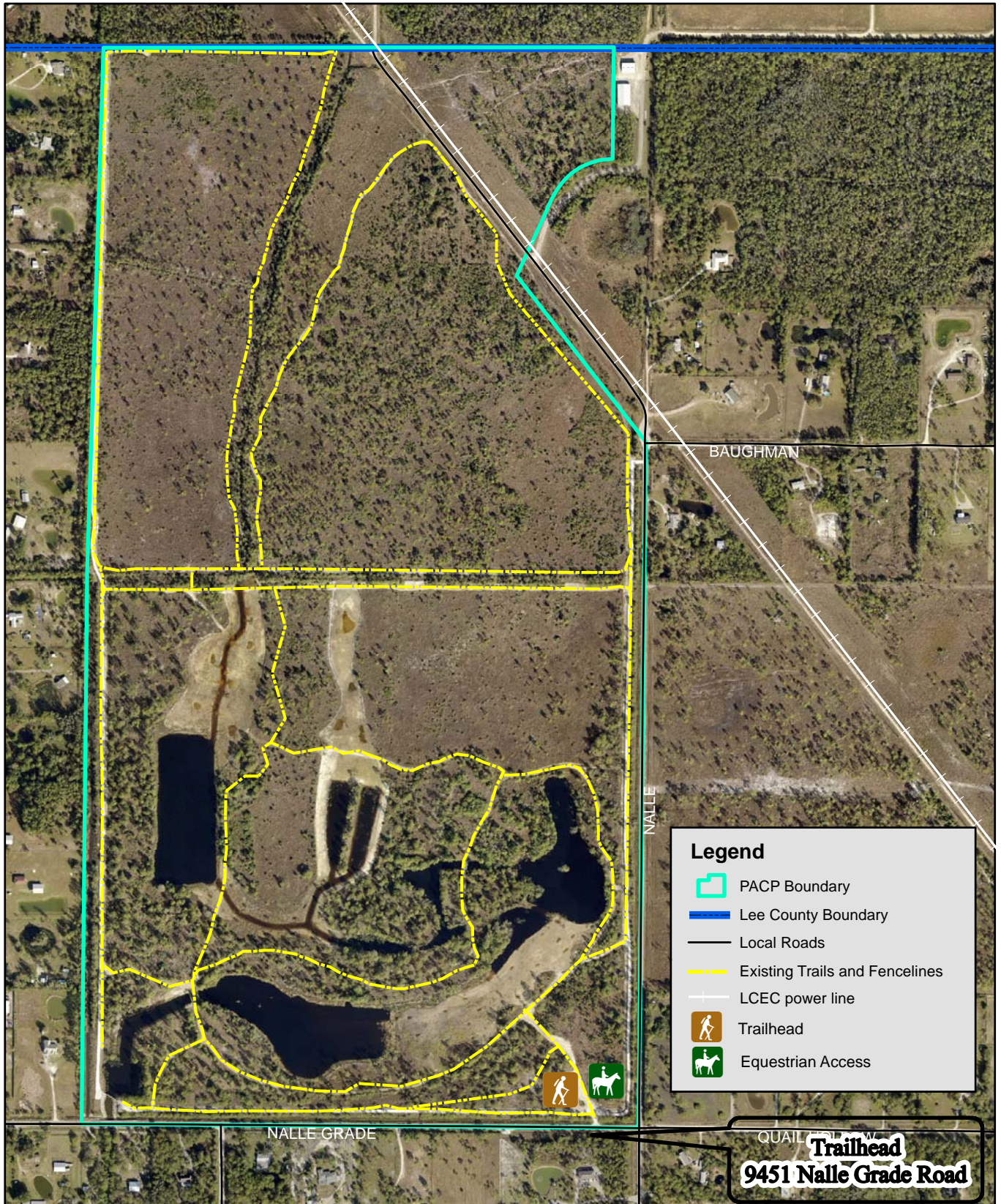



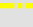







Trail Map Pop Ash Creek Preserve



Legend

-  PACP Boundary
-  Lee County Boundary
-  Local Roads
-  Existing Trails and Fencelines
-  LCEC power line
-  Trailhead
-  Equestrian Access

Trailhead
9451 Nalle Grade Road



This unmarked trail is over 6 miles long and is closed on Wednesdays.
 This Preserve does not have a marked trail system.
 The trails shown on this map are disked at least annually
 and may have soft sand and uneven surfaces.
 Take only pictures and leave only footprints.

