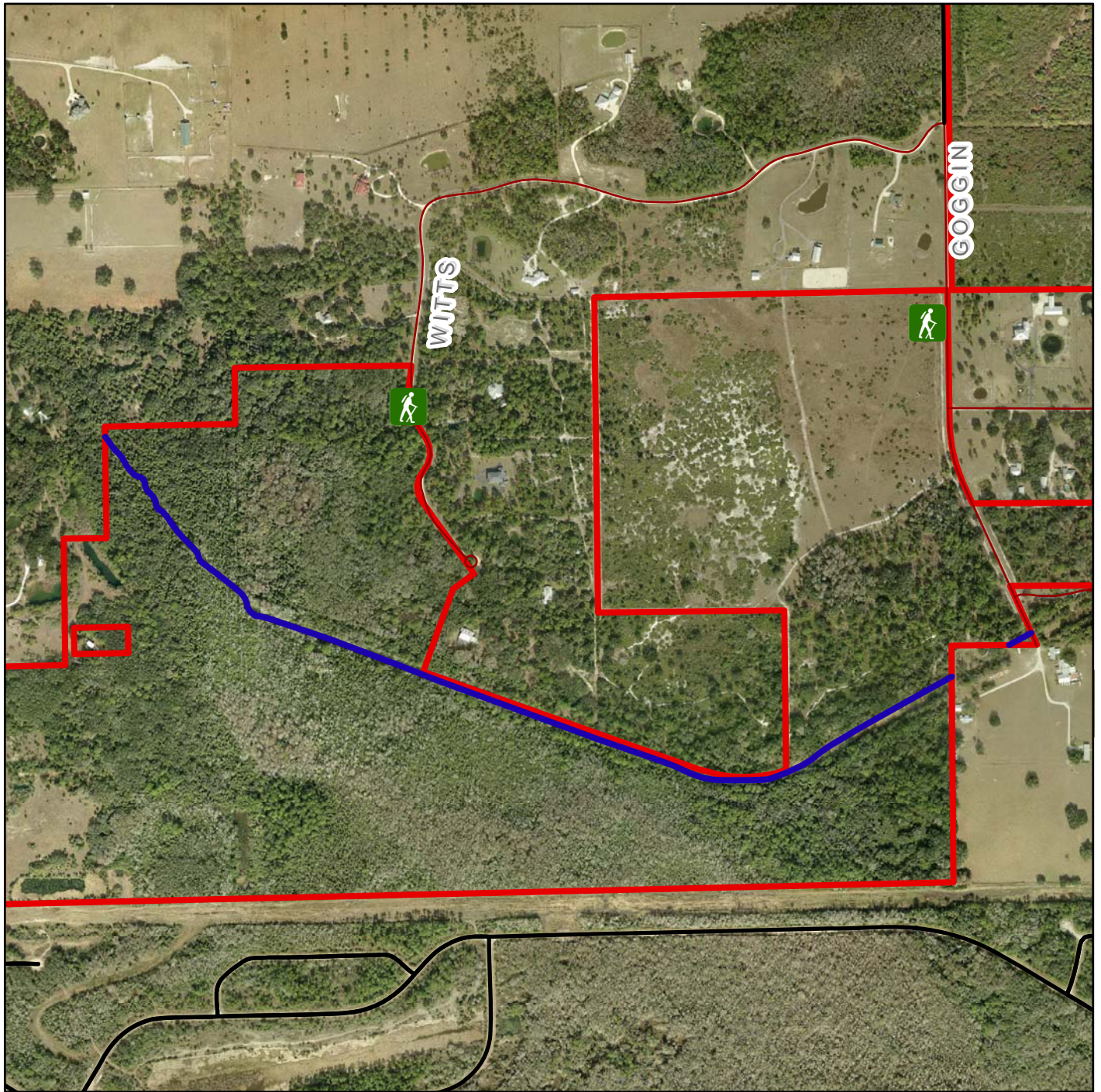


Alva Scrub Preserve



Legend



Pedestrian Gate

— Canal



Alva Scrub Preserve

This Preserve does not have a marked designated trail system. No firelines exist on the parcels accessible from the Witt's End neighborhood gate. The trailhead access gate off of Goggin Road provides hiking access into an area where fenceline perimeter firelines are disked annually and may have soft sand, but for most of the year are grown over with grasses and are uneven surfaces.

Take only pictures and leave only footprints.



0 500 1,000 2,000 Feet